

Pakistan

Demographic Profile

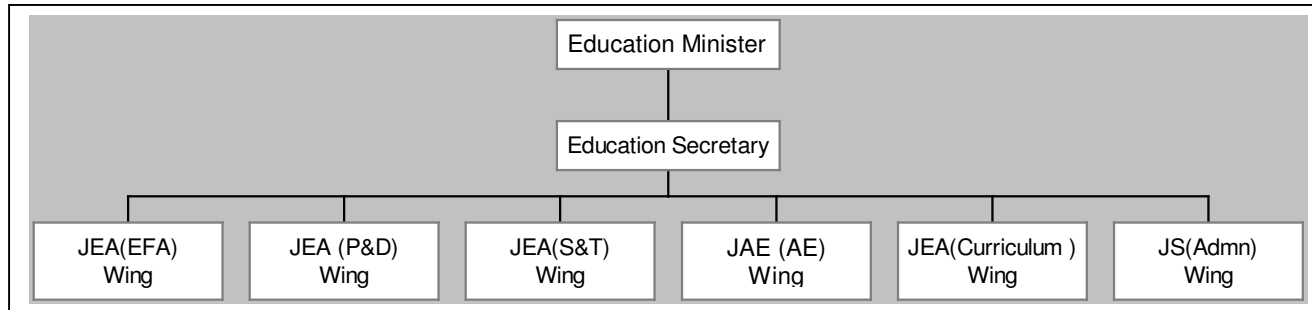
According to the Population Census 1998, Pakistan has total population of 132,352,279, of which 68,873,686 are males and 63,478,593 are females. The country has an average population density of 166.3 persons per square kilometers. The distribution of population in three major age groups varies between 53.1% (aged 15-64 years) to 3.5% (aged over 65+ years); the proportion of population below 15 years of age is 43.4%. Percentage of urban population is 32.5% and the average household size is 6.8 persons per household.

Administrative Structure of the Ministry of Education

The formulation of education policies is the responsibility of the Federal Ministry of Education. The Ministry also prepares the national sectoral plans within the framework of the national plan, appropriate guidelines, standards and targets.

Following is the administrative set-up of the Ministry of Education:

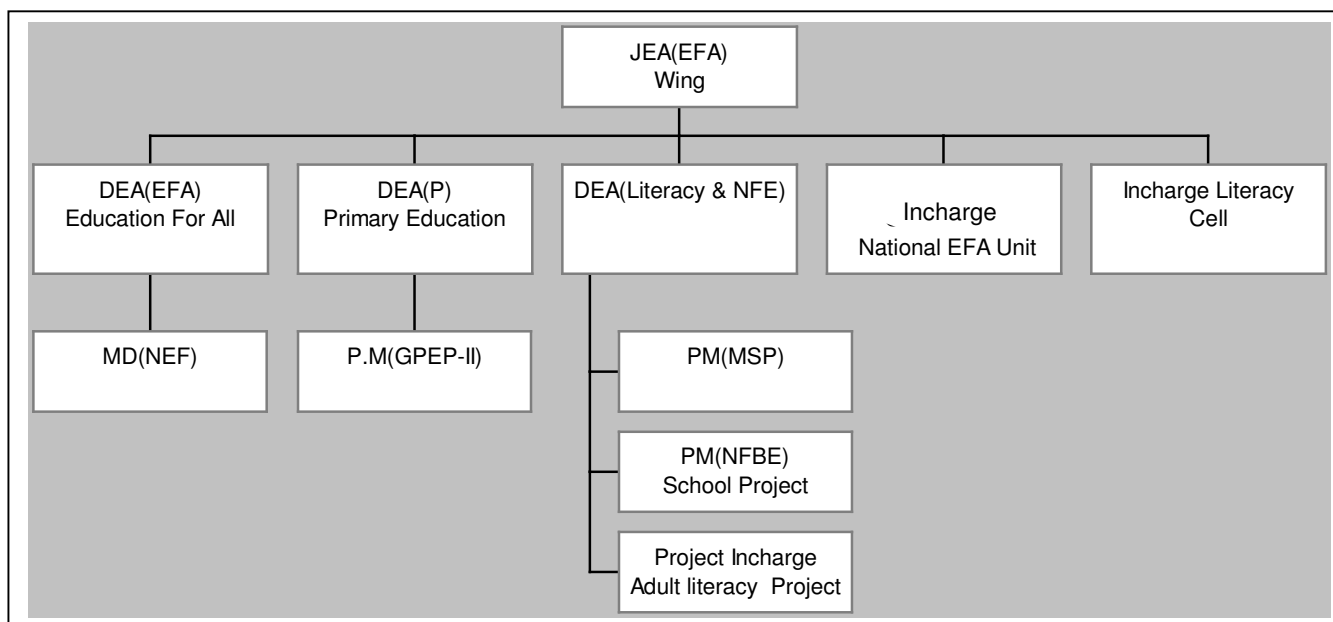
Organogram of Federal Ministry of Education



The policy, planning and coordination of major components of Education for All (EFA) i.e., primary education; adult literacy; and early childhood education, are the responsibility of the EFA Wing, Ministry of Education, whereas the implementing agencies are the provincial educational departments, district governments and non-governmental organizations.

Following is the administrative set up of the EFA Wing:

Organogram of Education for All Wing



Number of Schools

Pakistan has total number of 202,249 public and private schools of all levels i.e., elementary, secondary and higher secondary levels (Table 1.1). Of these, there are 153,055 (76%) public and 49,194 (24%) private schools. Most of the public schools (136,729 – 89%) are located in the rural areas while a small number (16,326 – 11%) are located in the urban areas. Although in the urban areas, there is a small margin between the number of boys' (8,036) and girls' schools (6,453), there is a wide difference in the number of boys' (77,732) and girls' schools (33,385) in the rural areas.

There are 136,572 primary schools in the country. Of these 106,275 are in public sector with 30,297 in the private sector. An overwhelming majority of the public primary schools (96,189 – 91%) are located in the rural areas while the remaining (10,086 – 9.5%) are in the urban areas. Public primary schools do not display wide gender disparities as 57,943 (54%) are boys', 41,300 (39%) are girls', and 7,032 (7%) are mixed schools.

In the context of provincial distribution of primary schools, Punjab has 36%, Sindh has 28%, NWFP has 24% and Balochistan has 12% of the primary schools (Table 1.2).

School Enrolments

Total school enrolment for both public and private sectors is 25,072,318 students (at all levels i.e., primary to higher secondary level), of which 16,952,185 (68%) students are enrolled in the public sector and 8,120,133 (33%) students are enrolled in private institutions (Table 2.1). The gender ratio in the public and private sector schools is almost identical: with approximately 63% boys and 37% girls. The majority of the public sector enrolment is in the rural areas (70%) with only 30% students in the urban areas. In the urban areas, while there is no gender disparity, there is a wide difference between boys' (67%) and girls' (33%) enrolment in the rural areas.

At the primary stage, total enrolment is 19,147,166 students, of which 65% are in public schools and 35% in private institutions. The gender ratio in the public and private enrolments is almost similar: in the public sector, 62% students are boys and 38% are girls; in the private schools, 66% are boys and 34% are girls. Similar to total enrolments, while there is no apparent gender disparity in urban areas, there is a wide disparity in rural enrolments.

Of the total public sector enrolments of 16,952,185 students, 92% are at the elementary stage and 74% students are in primary stage (Table 2.2). In the primary classes, 27% children are in kachi (pre-school) and in the “unadmitted” category. Almost 60% of these pre-school children are boys while remaining 40% are girls.

Distribution of primary enrolments across provinces vary between 55% and 1% (Table 2.3). Punjab (55%), Sindh (21%); NWFP (16%); Balochistan (4%); FATA (2%); FANA (1%) and ICT (1%). Female enrolments, too, display a similar pattern: Punjab (60%); Sindh (21%); NWFP (13%); Balochistan (3%); FATA (1%); FANA (1%) and ICT (1%). Distribution of kachi enrolments, especially for girls, shows a different pattern (Table 2.4): Punjab (66%); Sindh (8%); NWFP (17%); Balochistan (6%); FATA (2%); FANA (1%) and ICT (negligible).

Participation Rates

Gross primary participation rates have varied between 1997/98 and 1999/2000 (Table 3). Excluding kachi enrolments, public sector gross primary participation rate increased from 41% in 1997/98 to 49% in 1999/2000; however, for girls, participation rate slipped from 33% in 1997/98 to 29% in 1999/2000 and then increased to 34% in 1999/2000. With kachi enrolments included, gross enrolment levels are higher but the pattern of change over the three-year period remains same: from 81% in 1997/98 to 82% in 1998/99 and then 85% in 1999/2000; for girls, gross participation rates slip from 67% in 1997/98 to 61% in 1998/99 and then increase to 65% in 1999/2000.

Teachers

Teachers in Pakistani public schools are generally qualified and trained (Tables 4.1 and 4.2), with almost 97% of both male and female teachers (at all levels of instruction) possessing the required teachers’ training certificates and the required academic qualification. Available statistics for primary teachers in the provinces¹ show Punjab with most teachers, followed by NWFP and then Sindh (Table 4.3).

¹ Data not available for Balochistan

Net Primary Participation Rates (District Ranking)

In 1998, net participation rates for 102 districts in the four provinces of Pakistan ranged between 74.78% in Gujrat to 3.74% in Jhal Magsi (Table 5)². Districts with participation rates above 70% include Gujrat; Rawalpindi; Sailkot; and Jhelum. However, planners need to focus more on the districts with lower rates, especially those with rates lower than 20%. Special attention needs to be paid to districts with rates below 10%: Nasirabad; Dera Bugti; Kohlu; Kohistan; and Jhal Magsi.

Literacy Rates

Although literacy rates (for 10+ age group) have improved over the past two decades, they are still low, especially in the rural areas (Tables 6.1 and 6.2). In 2001, estimated literacy rate was 50.5%, with 63% for males and 38% for females; 70% for urban areas and 39% for rural areas.

District ranking reveals that literacy rates across various districts of the four provinces range between 76% in Karachi Central and 10.37% in Musa Khel (Table 6.3). High literacy districts include Karachi east; Islamabad and Rawlapindi. However, planners should focus more resources towards uplifting the low literacy districts which include Nasirabad; Jhal magsi; Kohlu; Kohistan; and Musa Khel and other districts belonging to the category of “backward regions” (Table 6.4).

Education Budgets

Over the past three years, total education budget as share of GDP has declined from 2.4% in 1998/99 to 2.2% in 1999/2000 to 2.06% in 2000/01. In the provinces, in 2000/01, the recurrent education as percentage of provincial budget varied from 27% in NWFP to 12.7% in Sindh (Table 7.1). Development budget as percentage of total provincial budget ranged between 16.23% in NWFP to 8.57% in Punjab.

A major share of the federal education budget, both recurrent and development is allocated to the Ministry of Education (Table 7.2). In 2001/02, according to the revised estimates for the development budget, the Ministry of Education got an increase of almost 23.2% from the previous year (Table 7.3).

² Data not available for Quetta.

Historically, the five-year development plans extended priority to secondary and tertiary education. It was only since the Seventh Five Year Plan that primary education became the most preferred sub-sector in education allocations (Table 7.4).

In the context of provincial development budgets, primary education enjoys highest priority (Table 7.5). In 2001/02, in Punjab, primary education got an allocation of 45%; in Sindh, 39%; in NWFP 38%; and 62% in Balochistan. Although data are not available for 2001/02, but information for 2000/01, shows that in recurrent budgets, primary education was accorded highest priority by the provinces.

Population Projections

To facilitate the planning of various sectors of the economy, the National Institute of Population Studies, Islamabad, has generated 15-year projections (till 2015) for different age groups, separately for urban and rural areas (Tables 8.1-8.3).

Table 1.1 Number of Public and Private Schools Pakistan (1999-2000)

| Location | Gender | Mosque | Primary | Middle | High | Higher Sec. | Total |
|-----------------|------------------------|---------------|----------------|---------------|-------------|--------------------|--------------|
| Rural | <i>Boys</i> | 14,109 | 53,416 | 5,430 | 4,487 | 290 | 77,732 |
| | <i>Girls</i> | 232 | 36,785 | 4,751 | 1,493 | 124 | 43,385 |
| | <i>Mixed</i> | 9,003 | 5,988 | 394 | 213 | 14 | 15,612 |
| | <i>Total</i> | 23,344 | 96,189 | 10,575 | 6,193 | 428 | 136,729 |
| Urban | <i>Boys</i> | 1,411 | 4,527 | 720 | 1,270 | 108 | 8,036 |
| | <i>Girls</i> | 57 | 4,515 | 743 | 1,005 | 133 | 6,453 |
| | <i>Mixed</i> | 692 | 1,044 | 47 | 41 | 13 | 1,837 |
| | <i>Total</i> | 2,160 | 10,086 | 1,510 | 2,316 | 254 | 16,326 |
| Total | <i>Boys</i> | 15,520 | 57,943 | 6,150 | 5,757 | 398 | 85,786 |
| | <i>Girls</i> | 289 | 41,300 | 5,494 | 2,498 | 257 | 49,838 |
| | <i>Mixed</i> | 9,695 | 7,032 | 441 | 254 | 27 | 17,449 |
| | <i>Total</i> | 25,504 | 106,275 | 12,085 | 8,509 | 682 | 153,055 |
| | <i>Private Schools</i> | *** | 30,297 | 12,550 | 5,940 | 407 | 49,194 |
| | <i>Grand Total</i> | 25,504 | 136,572 | 24,635 | 14,449 | 1,089 | 202,249 |

Source: Academy of Educational Planning & Management (AEPAM), Islamabad.

**Table 1.2 Number of Schools in Public Sector
Provinces 1999-2000**

| Province | Mosque Schools | | | Primary Schools | | | Middle Schools | | | High Schools | | |
|-------------|----------------|-------|-------|-----------------|-------|-------|--------------------|-------|-------|--------------|-------|-------|
| | Boys | Girls | Total | Boys | Girls | Total | Boys | Girls | Total | Boys | Girls | Total |
| Punjab | 8214 | 19 | 8233 | 21673 | 22515 | 44188 | 2519 | 3459 | 5978 | 2947 | 1512 | 4459 |
| Sindh | - | - | - | 16893 | 5976 | 38885 | 1064 | 598 | 2073 | 805 | 407 | 1449 |
| NWFP | - | - | 3179 | 14734 | 7641 | 22375 | Data not available | | | | | |
| Balochistan | - | - | - | 7220 | 2539 | 9759 | 528 | 158 | 686 | 371 | 94 | 465 |

Note: In Sindh in addition to the above mentioned boys and girls there are 16016, 411 and 237 mixed primary, middle and secondary schools respectively. However the total number of schools in Sindh include mixed schools.

Sources: Provincial EMIS

**Table 2.1 School Enrolment (Public and Private) by Stage
Pakistan (1999-2000)**

| <i>Stage</i> | <i>Urban</i> | | | <i>Rural</i> | | | <i>Total</i> | | |
|-----------------------|--------------|--------------|--------------|--------------|--------------|--------------|--------------|--------------|-------------------------------|
| | <i>Boys</i> | <i>Girls</i> | <i>Total</i> | <i>Boys</i> | <i>Girls</i> | <i>Total</i> | <i>Boys</i> | <i>Girls</i> | <i>Total</i> |
| <i>Primary Stage</i> | 1,531,770 | 1,403,493 | 2,935,263 | 6,191,074 | 3,354,129 | 9,545,203 | 7,722,844 | 4,757,622 | 12,480,466 |
| <i>Private</i> | *** | *** | *** | *** | *** | *** | 4380737 | 2286463 | 6,667,200 |
| <i>Total</i> | 1,531,770 | 1,403,493 | 2,935,263 | 6,191,074 | 3,354,129 | 9,545,203 | 12,103,581 | 7,044,085 | 19,147,666 (including Katchi) |
| <i>Middle Stage</i> | 738,456 | 619,711 | 1,358,167 | 1,235,485 | 480,286 | 1,715,771 | 1,973,941 | 1,099,997 | 3,073,938 |
| <i>Private</i> | *** | *** | *** | *** | *** | *** | 523413 | 514904 | 1,038,317 |
| <i>Total</i> | 738,456 | 619,711 | 1,358,167 | 1,235,485 | 480,286 | 1,715,771 | 2,497,354 | 1,614,901 | 4,112,255 |
| <i>High Stage</i> | 399,929 | 314,190 | 714,119 | 460,808 | 136,180 | 596,988 | 860,737 | 450,370 | 1,311,107 |
| <i>Private</i> | *** | *** | *** | *** | *** | *** | 212058 | 202558 | 414,616 |
| <i>Total</i> | 399,929 | 314,190 | 714,119 | 460,808 | 136,180 | 596,988 | 1,072,795 | 652,928 | 1,725,723 |
| <i>High Sec.Stage</i> | 26,477 | 28,139 | 54,616 | 20,009 | 12,049 | 32,058 | 46,486 | 40,188 | 86,674 |
| <i>Private</i> | *** | *** | *** | *** | *** | *** | *** | *** | *** |
| <i>Total</i> | 26,477 | 28,139 | 54,616 | 20,009 | 12,049 | 32,058 | 46,486 | 40,188 | 86,674 |
| <i>Public Total</i> | 2,696,632 | 2,365,533 | 5,062,165 | 7,907,376 | 3,982,644 | 11,890,020 | 10,604,008 | 6,348,177 | 16,952,185 |
| <i>Private Total</i> | *** | *** | *** | *** | *** | *** | 5,116,208 | 3,003,925 | 8,120,133 |
| <i>Grand Total</i> | 2,696,632 | 2,365,533 | 5,062,165 | 7,907,376 | 3,982,644 | 11,890,020 | 15,720,216 | 9,352,102 | 25,072,318 |

*** *Not available*

Source: Academy of Educational Planning and Management (AEPAM), Islamabad.

Table 2.2 Enrolment (Public Sector) by Stage, Gender and Location, Pakistan 1999-2000

| Stage | Classes | Urban | | | Rural | | | Total | | |
|-----------------------------|---------------------|-----------|-----------|-----------|-----------|-----------|------------|------------|-----------|------------|
| | | Boys | Girls | Total | Boys | Girls | Total | Boys | Girls | Total |
| Elementary | | | | | | | | | | |
| Primary Stage | Unadmitted | 61,005 | 33,907 | 94,912 | 312,669 | 98,521 | 411,190 | 373,674 | 132,428 | 506,102 |
| | Kachi | 249,684 | 265,309 | 514,993 | 1,355,883 | 986,620 | 2,342,503 | 1,605,567 | 1,251,929 | 2,857,496 |
| | Pakki | 322,563 | 271,608 | 594,171 | 1,339,278 | 684,984 | 2,084,262 | 1,721,841 | 956,592 | 2,678,433 |
| | Class 2 | 248,803 | 227,087 | 475,890 | 954,388 | 496,821 | 1,451,209 | 1,203,191 | 723,908 | 1,927,099 |
| | Class 3 | 227,925 | 213,659 | 441,584 | 812,640 | 419,670 | 1,232,310 | 1,040,565 | 633,329 | 1,673,894 |
| | Class 4 | 220,030 | 205,347 | 425,377 | 733,397 | 368,551 | 1,101,948 | 953,427 | 573,898 | 1,527,325 |
| | Class 5 | 201,760 | 186,576 | 388,336 | 622,819 | 298,962 | 921,781 | 824,579 | 485,538 | 1,310,117 |
| | Primary Stage Total | 1,531,770 | 1,403,493 | 2,935,263 | 6,191,074 | 3,354,129 | 9,545,203 | 7,722,844 | 4,757,622 | 12,480,466 |
| Middle Stage | Class 6 | 269,567 | 227,510 | 497,077 | 470,605 | 188,558 | 659,163 | 740,172 | 416,068 | 1,156,240 |
| | Class 7 | 230,149 | 200,125 | 430,274 | 419,798 | 162,863 | 582,761 | 649,947 | 363,088 | 1,013,035 |
| | Class 8 | 238,740 | 192,076 | 430,816 | 345,082 | 128,765 | 473,847 | 583,822 | 320,841 | 904,663 |
| | Middle Stage Total | 738,456 | 619,711 | 1,358,167 | 1,235,485 | 480,286 | 1,715,771 | 1,973,941 | 1,099,997 | 3,073,938 |
| TOTAL (Elementary) | | 2,270,226 | 2,023,204 | 4,293,430 | 7,426,559 | 3,834,415 | 11,260,974 | 9,696,785 | 5,857,619 | 15,554,404 |
| Secondary, | | | | | | | | | | |
| Higher Stage | Class 9 | 228,669 | 177,841 | 406,510 | 267,946 | 78,455 | 346,401 | 496,615 | 256,296 | 752,911 |
| | Class 10 | 171,260 | 136,349 | 307,609 | 192,862 | 57,725 | 250,587 | 364,122 | 194,074 | 558,196 |
| | High Stage Total | 399,929 | 314,190 | 714,119 | 460,808 | 136,180 | 596,988 | 860,737 | 450,370 | 1,311,107 |
| TOTAL (Secondary) | | 399,929 | 314,190 | 714,119 | 460,808 | 136,180 | 596,988 | 860,737 | 450,370 | 1,311,107 |
| Higher Secondary | | | | | | | | | | |
| High Secondary | Class 11 | 14,584 | 15,517 | 30,101 | 11,759 | 6,974 | 18,733 | 26,343 | 22,491 | 48,834 |
| | Class 12 | 11,893 | 12,622 | 24,515 | 8,250 | 5,075 | 13,325 | 20,143 | 17,697 | 37,840 |
| TOTAL (High Sec) | | 26,477 | 28,139 | 54,616 | 20,009 | 12,049 | 32,058 | 46,486 | 40,188 | 86,674 |
| Grand Total classes 1 to 12 | | 2,696,632 | 2,365,533 | 5,062,165 | 7,907,376 | 3,982,644 | 11,890,020 | 10,604,008 | 6,348,177 | 16,952,185 |

Sources: Provincial EMIS and Academy of Educational Planning and Management (AEPM)

**Table 2.3 Gross Primary Enrolment (Public and Private)
Provinces 1999-2000**

| | <i>Public</i> | | <i>Private</i> | | <i>Deeni Madaris</i> | | <i>Pakistan Literacy Commission (NFBES)</i> | | <i>Education Foundation</i> | | <i>Cantt & Garrison</i> | | <i>Total</i> | |
|--------------------|---------------|---------------|----------------|---------------|----------------------|---------------|---|---------------|-----------------------------|---------------|-----------------------------|---------------|--------------|---------------|
| | <i>Total</i> | <i>Female</i> | <i>Total</i> | <i>Female</i> | <i>Total</i> | <i>Female</i> | <i>Total</i> | <i>Female</i> | <i>Total</i> | <i>Female</i> | <i>Total</i> | <i>Female</i> | <i>Total</i> | <i>Female</i> |
| Punjab | 4698997 | 1816603 | 2923857 | 1320221 | 496793 | 33022 | 86910 | 34764 | 1759 | 427 | 72050 | 40098 | 8280366 | 3245135 |
| Sindh | 1991398 | 697475 | 935292 | 422196 | 142990 | 9480 | 73710 | 29484 | | | 5520 | 2922 | 3148910 | 1161557 |
| NWFP | 1747808 | 540530 | 537505 | 160288 | 202398 | 13430 | 30900 | 12360 | 563 | 128 | 8982 | 4498 | 2528156 | 731234 |
| Balochistan | 421095 | 151935 | 76015 | 24669 | 109336 | 72680 | 11100 | 4440 | | | 4506 | 3396 | 622052 | 188708 |
| FATA | 175573 | 32026 | 61134 | 3977 | 47400 | 3160 | 3660 | 1464 | 2574 | 689 | - | - | 290341 | 41316 |
| FANA | 74504 | 29815 | 17420 | 6968 | 29230 | 1896 | 630 | 252 | 811 | 231 | - | - | 122595 | 39162 |
| ICT | 79225 | 37072 | 35087 | 14318 | 14852 | 948 | 5940 | 2376 | 2313 | 1101 | - | - | 137417 | 55815 |
| TOTAL | 9188600 | 3305456 | 4586310 | 1952637 | 1042999 | 69204 | 212850 | 85140 | 8020 | 2576 | 91058 | 50914 | 15129837 | 5465927 |

Source: Provincial EMIS
NEMIS
Federal Bureau of Statistics
Pakistan Literacy Commission
Curriculum Wing of M/O Education

**Table 2.4 Total Public and Private Enrolment (Primary and Pre-Primary)
Provinces 1999-2000**

| | <i>Primary (I-V)</i> | | <i>Pre-Primary (Katchi/Unadmitted)</i> | | <i>Total</i> | |
|--------------------|----------------------|---------------|--|---------------|--------------|---------------|
| | <i>Total</i> | <i>Female</i> | <i>Total</i> | <i>Female</i> | <i>Total</i> | <i>Female</i> |
| Punjab | 8280366 | 3245135 | 1847967 | 842452 | 10056283 | 4047489 |
| Sindh | 3148910 | 1161557 | 243747 | 90098 | 3342911 | 1248737 |
| NWFP | 2528156 | 731234 | 541425 | 216427 | 3060599 | 943163 |
| Balochistan | 622052 | 188708 | 218716 | 80637 | 836262 | 268949 |
| FATA | 290341 | 41316 | 125097 | 27757 | 415438 | 69073 |
| FANA | 122595 | 39162 | 36030 | 14264 | 158625 | 53426 |
| ICT | 137417 | 55815 | 6827 | 3069 | 144244 | 58884 |
| TOTAL | 15129837 | 5465927 | 3019809 | 1274704 | 18149646 | 6740631 |

Source: Provincial EMIS
NEMIS
Federal Bureau of Statistics
Pakistan Literacy Commission
Curriculum Wing M/O Education

Table 3 Year Wise Gross Participation Rate at Primary Stage (I-V)

| | <i>1997-98</i> | | <i>1998-99</i> | | <i>1999-2000</i> | |
|---|----------------|---------------|----------------|---------------|------------------|---------------|
| | <i>Total</i> | <i>Female</i> | <i>Total</i> | <i>Female</i> | <i>Total</i> | <i>Female</i> |
| Population (5-9 years) | 220,463,911 | 9,826,056 | 20,873,189 | 10,022,577 | 21,290,653 | 10,223,028 |
| a. Without (Kachi & Private) | 8,440,964 | 3,248,549 | 8,809,577 | 2,907,305 | 10,444,449 | 3,462,376 |
| b. With Kachi & Private) | 16,645,421 | 6,539,823 | 17,152,587 | 6,153,728 | 18,058,588 | 6,689,717 |
| c. With (Kachi & Private @ 14% under reporting) | | | | | 18,700,671 | 6,963,086 |
| Participation rate a: | 41% | 33% | 42% | 29% | 49% | 34% |
| Participation rate b: | 81% | 67% | 82% | 61% | 85% | 65% |
| Participation rate c: | --- | --- | --- | --- | 88% | 68% |

Note: Mosque and Deeni Madaris included
 AJK not included

Sources: Ministry of Education EFA Wing (data for 1999-2000)
 AEPAM, NEMIS (Data for year 1997-98 and 1998-99)
 Population Census Organization

Table 4.1 Number of Teachers (Public Sector) By Level, Gender, Location and Professional Qualification Pakistan 1999-2000

| Level | Professional Qualification | Urban | | | Rural | | | Total | | |
|---------|----------------------------|-------|--------|-------|--------|--------|--------|--------|--------|--------|
| | | Male | Female | Total | Male | Female | Total | Male | Female | Total |
| Mosque | <i>P.T.C</i> | 2604 | 456 | 3060 | 18514 | 347 | 18861 | 21118 | 803 | 21921 |
| | <i>C.T</i> | 652 | 118 | 770 | 1930 | 21 | 1951 | 2582 | 139 | 2721 |
| | <i>B.Ed.</i> | 522 | 83 | 605 | 2182 | 23 | 2205 | 2704 | 106 | 2810 |
| | <i>M.Ed.</i> | 65 | 11 | 76 | 217 | 3 | 220 | 282 | 14 | 296 |
| | <i>Other (trained)</i> | 235 | 0 | 235 | 3547 | 0 | 3547 | 3782 | 0 | 3782 |
| | <i>Others</i> | 18 | 5 | 23 | 237 | 14 | 251 | 255 | 19 | 274 |
| | <i>Untrained</i> | 128 | 51 | 179 | 1034 | 20 | 1054 | 1162 | 71 | 1233 |
| | <i>Total</i> | 4224 | 724 | 4948 | 27661 | 428 | 28089 | 31885 | 1152 | 33037 |
| Primary | <i>P.T.C</i> | 17073 | 21399 | 38472 | 75306 | 46401 | 121707 | 92379 | 67800 | 160179 |
| | <i>C.T.</i> | 4303 | 3855 | 8158 | 18626 | 4741 | 23367 | 22929 | 8596 | 31525 |
| | <i>B.Ed</i> | 4378 | 4390 | 8768 | 11968 | 4238 | 16206 | 16346 | 8628 | 24974 |
| | <i>M.Ed</i> | 494 | 568 | 1062 | 805 | 245 | 1050 | 1299 | 813 | 2112 |
| | <i>Others</i> | 180 | 164 | 344 | 2264 | 868 | 3132 | 2444 | 1032 | 3476 |
| | <i>Other Untrained</i> | 3469 | 1807 | 5376 | 30032 | 13017 | 43049 | 33501 | 14824 | 48325 |
| | <i>Untrained</i> | 668 | 838 | 1506 | 2937 | 3017 | 5954 | 3605 | 3855 | 7460 |
| | <i>Total</i> | 30565 | 33021 | 63586 | 141938 | 72527 | 214465 | 172503 | 105548 | 278051 |
| Middle | <i>P.T.C</i> | 2203 | 3434 | 5637 | 10368 | 10706 | 21074 | 12571 | 14140 | 26711 |
| | <i>C.T</i> | 1948 | 2073 | 4021 | 9665 | 8082 | 17747 | 11613 | 10155 | 21768 |
| | <i>B.Ed</i> | 1284 | 1753 | 3037 | 5674 | 4531 | 10205 | 6958 | 6284 | 13242 |
| | <i>M.Ed</i> | 257 | 311 | 568 | 1218 | 502 | 1720 | 1475 | 813 | 2288 |

| Level | Professional Qualification | Urban | | | Rural | | | Total | | | |
|------------------|----------------------------|--------------|--------|-------|-------|--------|-------|-------|--------|--------|------|
| | | Male | Female | Total | Male | Female | Total | Male | Female | Total | |
| Middle | <i>Others</i> | 350 | 227 | 577 | 1957 | 597 | 2554 | 2307 | 824 | 3131 | |
| | <i>Other (Trained)</i> | 647 | 449 | 1096 | 3238 | 528 | 3766 | 3885 | 977 | 4862 | |
| | <i>Untrained</i> | 131 | 163 | 294 | 838 | 895 | 1733 | 969 | 1058 | 2027 | |
| | <i>Total</i> | 6820 | 8410 | 15230 | 32958 | 25841 | 58799 | 39778 | 34251 | 74029 | |
| High | <i>P.T.C</i> | 1996 | 4534 | 6530 | 10643 | 5844 | 16487 | 12639 | 10378 | 23017 | |
| | <i>C.T</i> | 7124 | 6414 | 13538 | 15660 | 4542 | 20202 | 22784 | 10956 | 33740 | |
| | <i>B.Ed</i> | 12123 | 11732 | 23855 | 15891 | 4705 | 20596 | 28014 | 16437 | 44451 | |
| | <i>M.Ed</i> | 4348 | 2221 | 6569 | 4704 | 749 | 5453 | 9052 | 2970 | 12022 | |
| | <i>Other (trained)</i> | 1526 | 890 | 2416 | 2186 | 247 | 2433 | 3712 | 1137 | 4849 | |
| | <i>Others</i> | 2599 | 919 | 3518 | 3758 | 502 | 4260 | 6357 | 1421 | 7778 | |
| | <i>Untrained</i> | 492 | 606 | 1098 | 1069 | 619 | 1688 | 1561 | 1225 | 2786 | |
| | <i>Total</i> | 30208 | 27316 | 57524 | 53911 | 17208 | 71119 | 84119 | 44524 | 128643 | |
| | High Sec | <i>P.T.C</i> | 97 | 260 | 357 | 266 | 445 | 711 | 363 | 705 | 1068 |
| | | <i>C.T.</i> | 1266 | 949 | 2215 | 1685 | 581 | 2266 | 2951 | 1530 | 4481 |
| <i>B.Ed</i> | | 1642 | 2134 | 3776 | 2240 | 886 | 3126 | 3882 | 3020 | 6902 | |
| <i>M.Ed</i> | | 884 | 646 | 1530 | 777 | 189 | 966 | 1661 | 835 | 2496 | |
| <i>Others</i> | | 387 | 253 | 640 | 457 | 112 | 569 | 844 | 365 | 1209 | |
| <i>Untrained</i> | | 208 | 217 | 425 | 52 | 98 | 150 | 260 | 315 | 575 | |
| <i>Total</i> | | 4484 | 4459 | 8943 | 5477 | 2311 | 7788 | 9961 | 6770 | 16731 | |

Source: Academy of Educational Planning and Management (AEPAM) Islamabad

**Table 4.2 Number of Teachers by Level, Gender, Location and Academic Qualification
- Pakistan 1999-2000**

| Level | Academic Qualification | Urban | | | Rural | | | Total | | |
|---------|------------------------|-------|--------|-------|-------|--------|--------|-------|--------|--------|
| | | Male | Female | Total | Male | Female | Total | Male | Female | Total |
| Mosque | Matric | | | | 41 | 187 | 228 | 41 | 187 | 228 |
| | F.A | | | | 7 | 54 | 61 | 7 | 54 | 61 |
| | B.A | | | | 4 | 22 | 26 | 4 | 22 | 26 |
| | B.Sc | | | | | 2 | 2 | | 2 | 2 |
| | M.A | | | | | 2 | 2 | | 2 | 2 |
| | Others | | | | 8 | 42 | 50 | 8 | 42 | 50 |
| | Total | | | | 60 | 309 | 369 | 60 | 309 | 369 |
| Primary | Matric | 4789 | 8192 | 12981 | 34887 | 77361 | 72248 | 39676 | 45553 | 85229 |
| | F.A | 892 | 2275 | 3167 | 11786 | 7998 | 19784 | 12678 | 10273 | 22951 |
| | F.Sc | 80 | 68 | 148 | 505 | 531 | 1036 | 385 | 590 | 1184 |
| | B.A | 1306 | 1571 | 2877 | 8194 | 4553 | 13647 | 9500 | 7024 | 16524 |
| | B.Sc | 108 | 40 | 178 | 964 | 236 | 1200 | 1072 | 306 | 1378 |
| | M.A | 59 | 124 | 183 | 498 | 282 | 780 | 557 | 406 | 963 |
| | M.Sc | 380 | 384 | 764 | 2360 | 1060 | 3420 | 2740 | 1444 | 4184 |
| | Others | 20 | 23 | 43 | 330 | 1223 | 1553 | 350 | 1246 | 1596 |
| | Total | 7634 | 12707 | 20341 | 59524 | 54144 | 113668 | 67158 | 66851 | 134009 |
| Middle | Matric | 1478 | 2756 | 4234 | 7842 | 10030 | 17872 | 9320 | 12786 | 22106 |
| | F.A | 1020 | 1617 | 2637 | 5016 | 7408 | 12424 | 6036 | 9025 | 15061 |
| | F.Sc | 90 | 119 | 209 | 280 | 297 | 577 | 370 | 416 | 786 |
| | B.A | 1145 | 1159 | 2304 | 4940 | 5590 | 10530 | 6085 | 6749 | 12834 |
| | B.Sc | 90 | 89 | 179 | 1320 | 795 | 2115 | 1410 | 884 | 2294 |

| <i>Academic Qualification</i> | | Urban | | | Rural | | | Total | | |
|-------------------------------|---------------|---------------|--------|-------|-------|--------|-------|-------|--------|--------|
| | | Male | Female | Total | Male | Female | Total | Male | Female | Total |
| Middle | <i>M.A</i> | 73 | 30 | 103 | 440 | 540 | 980 | 513 | 570 | 1083 |
| | <i>M.Sc.</i> | 692 | 501 | 1193 | 3486 | 2285 | 5771 | 4178 | 2776 | 6964 |
| | <i>Others</i> | 35 | 26 | 61 | 135 | 428 | 563 | 170 | 454 | 624 |
| | <i>Total</i> | 4623 | 6297 | 10920 | 23559 | 27373 | 50832 | 28082 | 33670 | 61752 |
| High | <i>Matric</i> | 2855 | 4163 | 7018 | 10786 | 6165 | 16951 | 13641 | 10328 | 23969 |
| | <i>F.A</i> | 2819 | 3895 | 6714 | 7630 | 4334 | 11964 | 10449 | 8229 | 18678 |
| | <i>F.Sc</i> | 604 | 377 | 981 | 1632 | 595 | 2227 | 2236 | 972 | 3208 |
| | <i>B.A</i> | 4905 | 4496 | 9401 | 9732 | 4148 | 13880 | 14637 | 8644 | 23281 |
| | <i>B.Sc</i> | 1600 | 916 | 2516 | 3517 | 1011 | 4528 | 5117 | 1927 | 7044 |
| | <i>M.A</i> | 1179 | 479 | 1658 | 1584 | 1101 | 2685 | 2763 | 1580 | 4343 |
| | <i>M.Sc</i> | 6046 | 2753 | 8799 | 8722 | 2149 | 10871 | 14768 | 4902 | 19670 |
| | <i>Others</i> | 212 | 265 | 477 | 414 | 550 | 964 | 626 | 815 | 441 |
| | <i>Total</i> | 20220 | 17344 | 37564 | 44017 | 20053 | 64070 | 64237 | 37397 | 101634 |
| | High Sec | <i>Matric</i> | 213 | 323 | 536 | 515 | 697 | 1212 | 728 | 1020 |
| <i>F.A</i> | | 315 | 492 | 807 | 593 | 456 | 1049 | 908 | 948 | 1856 |
| <i>F.Sc</i> | | 59 | 44 | 103 | 141 | 120 | 261 | 200 | 164 | 364 |
| <i>B.A</i> | | 436 | 550 | 986 | 792 | 416 | 1208 | 1228 | 966 | 2194 |
| <i>B.Sc</i> | | 143 | 179 | 322 | 343 | 80 | 423 | 486 | 259 | 745 |
| <i>M.A</i> | | 390 | 268 | 658 | 484 | 291 | 775 | 874 | 559 | 1433 |
| <i>M.Sc</i> | | 628 | 582 | 1210 | 1621 | 502 | 2123 | 2249 | 1084 | 3333 |
| <i>Others</i> | | 81 | 37 | 118 | 155 | 61 | 216 | 236 | 98 | 334 |
| <i>Total</i> | 2265 | 2475 | 4740 | 4644 | 2623 | 7267 | 6909 | 5098 | 12007 | |

Source: Academy of Educational Planning and Management (AEPAM) Islamabad.

Table 4.3 Number of Teachers in Public Sector Provinces(1999-2000)

| Province | Mosque Schools Teachers | | | Primary level (I-V) | | | Middle level (VI-VIII) | | | Secondary level (IX-X) | | |
|--------------------|-------------------------|--------|-------|---------------------|--------|--------|------------------------|--------|-------|------------------------|--------|-------|
| | Male | Female | Total | Male | Female | Total | Male | Female | Total | Male | Female | Total |
| Punjab | 7792 | 16 | 7808 | 65116 | 51724 | 116840 | 24474 | 29259 | 53733 | 45922 | 18301 | 64223 |
| Sindh | - | - | - | 20079 | 18355 | 39202 | 1422 | 1883 | 3305 | 10347 | 10132 | 20479 |
| NWFP | - | - | - | 41342 | 17238 | 58580 | Data Not Available | | | | | |
| Balochistan | | | | | | | | | | | | |

Source : Provincial EMIS

**Table 5. District Ranking by Net Participation Rate
Pakistan 1998**

| District | Province | Net Participation Rate 1998 (%) | Ranking |
|-----------------|----------|---------------------------------|---------|
| Gujrat | Punjab | 74.78 | 1 |
| Rawalpindi | Punjab | 74.55 | 2 |
| Sialkot | Punjab | 74.12 | 3 |
| Jhelum | Punjab | 73.44 | 4 |
| Karachi Central | Sindh | 68.92 | 5 |
| Malir | Sindh | 68.92 | 6 |
| Lahore | Punjab | 65.65 | 7 |
| Karachi South | Sindh | 64.51 | 8 |
| Karachi East | Sindh | 62.02 | 9 |
| Mandi Bahauddin | Punjab | 61.53 | 10 |
| Chakwal | Punjab | 60.61 | 11 |
| Faisalabad | Punjab | 58.15 | 12 |
| Toba Tek singh | Punjab | 58.06 | 13 |
| Gujranwala | Punjab | 57.87 | 14 |
| Narowal | Punjab | 56.56 | 15 |
| Hafizabad | Punjab | 55.08 | 16 |
| Karachi West | Sindh | 53.57 | 17 |
| Sargodha | Punjab | 53.2 | 18 |
| Attock | Punjab | 51.77 | 19 |
| Mianwali | Punjab | 49.42 | 20 |
| Abbottabad | NWFP | 48.86 | 21 |

| District | Province | Net Participation Rate 1998 (%) | Ranking |
|------------------|-----------------|--|----------------|
| Khushab | Punjab | 46.56 | 22 |
| Jhang | Punjab | 45.92 | 23 |
| Okara | Punjab | 43.73 | 24 |
| Multan | Punjab | 43.25 | 25 |
| Sahiwal | Punjab | 43.09 | 26 |
| Ziarat | Balochistan | 42.45 | 27 |
| Haripur | NWFP | 42.07 | 28 |
| Peshawar | NWFP | 41.80 | 29 |
| Kasur | Punjab | 41.58 | 30 |
| Sheikhupura | Punjab | 40.59 | 31 |
| Khanewal | Punjab | 40.24 | 32 |
| Panjgur | Balochistan | 39.64 | 33 |
| Vehari | Punjab | 39.24 | 34 |
| Bahawalnagar | Punjab | 38.66 | 35 |
| Naushahro Feroze | Sindh | 38.37 | 36 |
| Kech | Balochistan | 38.07 | 37 |
| Layyah | Punjab | 37.67 | 38 |
| Bhakkar | Punjab | 37.05 | 39 |
| Sukkur | Sindh | 36.17 | 40 |
| Hyderabad | Sindh | 35.91 | 41 |
| Mansehra | NWFP | 35.45 | 42 |

| District | Province | Net Participation Rate 1998 (%) | Ranking |
|-----------------------|--------------------|--|----------------|
| Pakpattan | Punjab | 34.99 | 43 |
| Bahawalpur | Punjab | 34.67 | 44 |
| Gwadar | Balochistan | 34.14 | 45 |
| Khairpur | Sindh | 33.52 | 46 |
| Kohat | NWFP | 32.80 | 47 |
| Dadu | Sindh | 32.22 | 48 |
| Pishin | Balochistan | 32.06 | 49 |
| Rahim Yar Khan | Punjab | 32.1 | 50 |
| Lodhran | Punjab | 31.59 | 51 |
| Newshehra | NWFP | 30.57 | 52 |
| Sanghar | Sindh | 30.3 | 53 |
| Nawabshah | Sindh | 29.91 | 54 |
| Mirpurkhas | Sindh | 28.71 | 55 |
| Larkana | Sindh | 28.48 | 57 |
| Mardan | NWFP | 28.64 | 56 |
| Chagi | Balochistan | 27.92 | 58 |
| Muzaffargarh | Punjab | 27.49 | 59 |
| Karak | NWFP | 27.04 | 60 |
| Swabi | NWFP | 25.92 | 61 |
| Rajanpur | Punjab | 25.01 | 62 |
| Lakki Marwat | NWFP | 24.89 | 63 |
| Ghotki | Sindh | 24.44 | 64 |

| District | Province | Net Participation Rate 1998 (%) | Ranking |
|-----------------|-----------------|--|----------------|
| D.G.Khan | Punjab | 23.69 | 65 |
| Umerkot | Sindh | 23.31 | 66 |
| Mastung | Balochistan | 22.44 | 67 |
| Jacobabad | Sindh | 21.79 | 68 |
| Killa Saifullah | Balochistan | 21.71 | 69 |
| Lasbela | Balochistan | 21.41 | 70 |
| Malakand P.A | NWFP | 20.94 | 71 |
| D.I.Khan | NWFP | 20.87 | 72 |
| Bannu | NWFP | 20.87 | 73 |
| Loralai | Balochistan | 20.33 | 74 |
| Hangu | NWFP | 19.88 | 75 |
| Swat | NWFP | 19.30 | 76 |
| Bolan | Balochistan | 19.7 | 77 |
| Khuzdar | Balochistan | 18.86 | 78 |
| Charsadda | NWFP | 18.60 | 79 |
| Badin | Balochistan | 18.35 | 80 |
| Shikarpur | Sindh | 18.2 | 81 |
| Sibi | Balochistan | 17.70 | 82 |
| Jafarabad | Balochistan | 17.69 | 83 |
| Tank | NWFP | 16.83 | 84 |
| Barkhan | NWFP | 16.38 | 85 |

| District | Province | Net Participation Rate 1998 (%) | Ranking |
|-----------------|-----------------|--|----------------|
| Buner | NWFP | 16.36 | 86 |
| Thatta | Sindh | 16.29 | 87 |
| Qilla Abdullah | Balochistan | 15.89 | 88 |
| Lower Dir | NWFP | 15.65 | 89 |
| Zhob | Balochistan | 14.35 | 90 |
| Awaran | Balochistan | 14.08 | 91 |
| Kharan | Balochistan | 13.85 | 92 |
| Tharparkar | Sindh | 12.98 | 93 |
| Kalat | Balochistan | 12.77 | 94 |
| Batagram | NWFP | 12.19 | 95 |
| Shangla | NWFP | 11.39 | 96 |
| Musakhel | Balochistan | 10.29 | 97 |
| Nasirabad | Balochistan | 7.44 | 98 |
| Dera Bugti | Balochistan | 7.25 | 99 |
| Kohlu | Balochistan | 4.68 | 100 |
| Kohistan | Balochistan | 4.49 | 101 |
| Jhal Magsi | Balochistan | 3.74 | 102 |
| Quetta | Balochistan | Not Available | |

Source : Population Census Organization
EFA Wing, Ministry of Education

**Table 6.1 Literacy Rate of Pakistan (10+ Years)
Pakistan**

| Year | Total | Male | Female | Urban | Rural |
|-------------|--------------|-------------|---------------|--------------|--------------|
| 1981 | 26.2 | | | | |
| 1998 | 45.0 | 56.5 | 32.6 | 64.7 | 34.4 |
| 2000 | 49.0 | 61.3 | 36.8 | 68 | 37.0 |
| 2001 | 50.5 | 63.0 | 38.0 | 70 | 39.0 |

Source: EFA Wing, Ministry of Education

**Table 6.2 Number of Literates and Illiterates in Pakistan (10+ age group)
Pakistan (in million)**

| Year | Total | | Male | | Female | | Rural | | Urban | |
|-------------|------------------|--------------------|------------------|--------------------|------------------|--------------------|------------------|--------------------|------------------|--------------------|
| | <i>Literates</i> | <i>Illiterates</i> | <i>Literates</i> | <i>Illiterates</i> | <i>Literates</i> | <i>Illiterates</i> | <i>Literates</i> | <i>Illiterates</i> | <i>Literates</i> | <i>Illiterates</i> |
| 1981 | 15.3 | 44.3 | 11 | 20.8 | 4.3 | 23.5 | 7.4 | 35.4 | 7.9 | 8.9 |
| 1998 | 40 | 48.8 | 26.2 | 20.2 | 13.9 | 28.7 | 19.9 | 37.9 | 20 | 11 |
| 2000 | 50 | 51.8 | 32 | 21.4 | 18.4 | 30.4 | 24.8 | 42.3 | 23.4 | 11 |
| 2001 | 52 | 51.5 | 34 | 20 | 18.5 | 31.5 | 26.6 | 41.6 | 25 | 10.8 |

Source EFA Wing, Ministry of Education

Table 6.3 District Ranking of Literacy Rate (10+years) and Illiterate Population Pakistan (1998)

| Ranking | District Name | Literacy Rate (%) | Illiterate Population 10+ | Ranking. | District Name | Literacy Rate (%) | Illiterate Population 10+ |
|---------|-----------------|-------------------|---------------------------|----------|----------------|-------------------|---------------------------|
| 1 | Karachi Central | 76.00 | 417,894 | 54 | Ziarat | 34.34 | 14,293 |
| 2 | Karachi East | 73.11 | 559,594 | 55 | Bhakkar | 34.17 | 477,011 |
| 3 | Islamabad | 72.38 | 166,708 | 56 | Nawabshah | 34.13 | 474,088 |
| 4 | Rawalpindi | 70.45 | 740,625 | 57 | Rahim Yar Khan | 33.09 | 1,398,416 |
| 5 | Karachi South | 67.59 | 434,643 | 58 | Bannu | 32.11 | 294,486 |
| 6 | Lahore | 64.66 | 1,650,853 | 59 | Shikarpur | 31.94 | 393,354 |
| 7 | Jhelum | 63.92 | 247,880 | 60 | Panjgur | 31.35 | 95,140 |
| 8 | Gujrat | 62.18 | 562,450 | 61 | D.I.Khan | 31.28 | 389,067 |
| 9 | Sialkot | 58.92 | 799,630 | 62 | Pishin | 31.14 | 157,231 |
| 10 | Quetta | 57.07 | 231,116 | 63 | Charsada | 31.11 | 469,586 |
| 11 | Chakwal | 56.72 | 346,276 | 64 | Sanghar | 30.87 | 675,226 |
| 12 | Abbottabad | 56.61 | 273,570 | 65 | D.G. Khan | 30.61 | 733,913 |
| 13 | Gujranwala | 56.55 | 1,049,510 | 66 | Hangu | 30.50 | 141,462 |
| 14 | Karachi West | 56.04 | 668,352 | 67 | Lower-Dir | 29.90 | 313,515 |
| 15 | Haripur | 53.72 | 230,737 | 68 | Lodhran | 29.90 | 552,644 |
| 16 | Malir | 53.56 | 325,432 | 69 | Lakki Marwat | 29.71 | 217,398 |
| 17 | Narowal | 52.65 | 416,642 | 70 | Ghotki | 29.01 | 450,081 |
| 18 | Faisalabad | 51.94 | 1,880,742 | 71 | Swat | 28.75 | 588,304 |
| 19 | Toba Tek Singh | 50.50 | 575,767 | 72 | Muzaffargarh | 28.45 | 1,226,326 |
| 20 | Attock | 49.27 | 474,779 | 73 | Mastung | 27.58 | 79,840 |
| 21 | Mandi Bahauddin | 47.44 | 438,461 | 74 | Kech | 27.51 | 194,428 |
| 22 | Sukkur | 46.62 | 330,593 | 75 | Chaghi | 26.99 | 96,575 |
| 24 | Sargodha | 46.30 | 1,023,488 | 76 | Tank | 26.25 | 113,459 |
| 25 | Hyderabad | 44.25 | 1,134,367 | 77 | Sibi | 25.473 | 93,838 |
| 26 | Kohat | 44.06 | 214,258 | 78 | Gwadar | 25.465 | 92,828 |

| | | | | | | | |
|----|------------------|-------|-----------|-----|-----------------|-------|---------|
| 27 | Sahiwal | 43.90 | 740,641 | 79 | Umer Kot | 24.83 | 329,012 |
| 28 | Sheikhupura | 43.78 | 1,309,213 | 80 | Badin | 24.63 | 572,742 |
| 29 | Multan | 43.38 | 1,229,392 | 81 | Jacobabad | 23.66 | 705,112 |
| 30 | Mianwali | 42.76 | 421,329 | 82 | Buner | 22.62 | 252,534 |
| 31 | Noshera | 42.50 | 347,518 | 83 | Lasbela | 22.30 | 167,775 |
| 32 | Karak | 41.92 | 159,831 | 84 | Thatta | 22.14 | 586,524 |
| 33 | Peshawar | 41.79 | | 85 | Upper Dir | 21.21 | 285,151 |
| 34 | Hafizabad | 40.74 | 351,799 | 86 | Rajanpur | 20.73 | 559,510 |
| 35 | Khushab | 40.50 | 386,715 | 87 | Loralai | 20.47 | 162,114 |
| 36 | Chitral | 40.30 | 123,031 | 88 | Kalat | 19.86 | 123,145 |
| 37 | Khanewal | 39.94 | 868,572 | 89 | Jafarabad | 18.51 | 232,626 |
| 38 | Malakand P.A. | 39.50 | 178,063 | 90 | Tharparkar | 18.32 | 474,908 |
| 39 | Naushahro Feroze | 39.14 | 440,045 | 91 | Batagram | 18.31 | 166,203 |
| 40 | Layyah | 38.68 | 440,045 | 92 | Killa Saifullah | 17.55 | 100,032 |
| 41 | Okara | 37.79 | 975,309 | 93 | Khuzdar | 17.46 | 226,817 |
| 42 | Jhang | 37.12 | 1,261,071 | 94 | Zhob | 16.78 | 143,187 |
| 43 | Vehari | 36.79 | 922,771 | 95 | Killa Abdullah | 16.10 | 198,708 |
| 44 | Mardan | 36.45 | 621,769 | 96 | Bolan | 15.78 | 163,587 |
| 45 | Mansehra | 36.32 | 506,766 | 97 | Barkhan | 15.67 | |
| 46 | Kasur | 36.21 | 1,044,193 | 98 | Kharan | 15.05 | 114,855 |
| 47 | Swabi | 36.03 | 442,268 | 99 | Awaran | 14.79 | 66,148 |
| 48 | Mirpurkhas | 35.97 | 393,535 | 100 | Shangle | 14.73 | 241,701 |
| 49 | Dadu | 35.56 | 739,667 | 101 | Nassirabad | 12.69 | 141,469 |
| 50 | Khairpur | 35.50 | 653,975 | 102 | Jhal Magsi | 12.28 | 63,556 |
| 51 | Bahawalnagar | 35.07 | 936,819 | 103 | Kohlu | 12.15 | 60,858 |
| 52 | Larkana | 34.95 | 814,889 | 104 | Kohistan | 11.08 | 274,919 |
| 53 | Pakpattan | 34.70 | 588,309 | 105 | Musa Khel | 10.37 | 76,265 |

Source: EFA Wing, Ministry of Education

**Table 6.4 Ranking of Backward Districts
Pakistan (1998)**

| District | Province | Rank By WFS | District | Province | Rank by WFS |
|---------------|-------------|-------------|----------------|-------------|-------------|
| Layyah | Punjab | 59 | Khuzdar | Balochistan | 82 |
| Ghotki | Sindh | 60 | Swabi | NWFP | 83 |
| Bhakkar | Punjab | 61 | Rajanpur | Punjab | 84 |
| N.Feroze | Sindh | 62 | Dera Bugti | Balochistan | 85 |
| D.G.Khan | Punjab | 63 | Jhal Magsi | Balochistan | 86 |
| Nowshera | NWFP | 64 | Umerkot | Sindh | 87 |
| Ljaor[ir | Sindh | 65 | Tank | NWFP | 88 |
| Dadu | Sindh | 66 | Badin | Sindh | 89 |
| Ka;at | Balochistan | 67 | Lakki | NWFP | 90 |
| Lasbela | Balochistan | 68 | Thatta | Sindh | 91 |
| Lodhran | Punjab | 69 | Tharparkar | Sindh | 92 |
| D.I.Khan | NWFP | 70 | Killa Abdullah | Balochistan | 93 |
| Muzaffar Garh | Punjab | 71 | Nasirabad | Balochistan | 94 |
| Charsadda | NWFP | 72 | Buner | NWFP | 95 |
| Malakand | NWFP | 73 | Hangu | NWFP | 96 |
| Zhob | Balochistan | 74 | Kohistan | NWFP | 97 |
| Shikarpur | Sindh | 75 | Awaran | Balochistan | 98 |
| Kharan | Balochistan | 76 | Shangla | NWFP | 99 |
| Swat | NWFP | 77 | Lower Dir | NWFP | 100 |
| Karak | NWFP | 78 | Battagram | NWFP | 101 |
| Bolan | Balochistan | 79 | | | |
| Barkan | Balochistan | 80 | | | |
| Jacobabad | Sindh | 81 | | | |

Reported rank ordering is given using the Weighted Factor Score Technique

Note: Preliminary result for the paper " Development Rank Ordering of Districts of Pakistan". By Syed Ashraf Wasti and Mr. Minhaj Siddiqui

Table 7.1 National Education Budget during 9th Five-Year Plan (1998-2003) Pakistan (Rs. in Millions)

| Province/Yr. | | 1998-99 | | 1999-2000 | | 2000-2001 | | 2001-2002 | | 2002-2003 | |
|--|------------------------------|------------|-------------------|-------------|------------|--------------|-------------|-----------|------------|-----------|-----|
| | | Dev. | Rec. | Dev. | Rec. | Dev. | Rec. | Dev. | Rec. | Dev | Rec |
| Punjab | <i>Education Budget</i> | 2570.000 | 29970.623 | 1531.351 | 29,995.910 | 1,780.983 | 30,683.395 | 1382.677 | 30,299.095 | | |
| | <i>Total Prov. Budget</i> | 15370.000 | 86672.891 | 9073.518 | 91,190.834 | 20,792.000 | 166,619.994 | | | | |
| | % | 16.72% | 34.18% | 16.88% | 32.89% | 8.57% | 18.42% | | | | |
| Sindh | <i>Education Budget</i> | 2306.294 | 13890.436 | 1232.554 | 13,018.231 | 1,272.164 | 13,806.078 | 1150.000 | 13,187.691 | | |
| | <i>Total Prov. Budget</i> | 8710.000 | 66184.087 | 4000.000 | 61,163.612 | 11,253.300 | 108,804.107 | | | | |
| | % | 26.48% | 21.12% | 30.81% | 21.28% | 11.30% | 12.69% | | | | |
| NWFP | <i>Education Budget</i> | 1596.925 | 9471.355 | 1553.428 | 9855.515 | 1,499.061 | 10,575.621 | 664.067 | 8,300.000 | | |
| | <i>Total Prov. Budget</i> | 4927.300 | 33001.237 | 3995.220 | 35493.000 | 9,236.700 | 39,132.200 | | | | |
| | % | 32.41% | 28.70% | 38.88% | 27.77% | 16.23% | 27.03% | | | | |
| Balochistan | <i>Education Budget</i> | 332.687 | 3477.530 | 1388.966 | 3944.645 | 808.459 | 4289.756 | 1072.268 | 4,100.000 | | |
| | <i>Total Prov. Budget</i> | 2000.000 | 15175.233 | 5520.000 | 17152.000 | 6995.016 | 17754.981 | | | | |
| | % | 16.63% | 22.92% | 25.16% | 23.00% | 11.56% | 24.16% | | | | |
| Federal | <i>Education Budget</i> | 932.687 | 5288.578 | 1706.889 | 5736.9045 | 1266.532 | 6255.523 | 5160.204 | 0.000 | | |
| | <i>Total Budget</i> | 117616.300 | 559256.70 | 116291.627 | 575066.00 | 120432.500 | 577574.000 | | | | |
| | % | 0.79% | 0.95% | 1.47% | 1.00% | 1.05% | 1.08% | | | | |
| Total (National) | | | | | | | | | | | |
| | <i>Education Budget</i> | 7738.158 | 7738.15862188.522 | 7413.188 | 62,551.205 | 6627.199 | 65610.373 | 9429.216 | 62437.906 | | |
| | <i>Total National Budget</i> | 148623.600 | 761290.148 | 138880.365 | 780065.446 | 168709.516 | 909885.282 | | | | |
| | % | 5.21% | 8.17% | 5.34% | 8.02% | 3.93% | 7.21% | | | | |
| Total Education Budget: (Dev + Recurring) | | 69926.680 | | 69964.393 | | 72237.572 | | 71867.122 | | | |
| The National Budget: % Share to Education | | 909913.748 | | 918945.811 | | 1078.594.798 | | | | | |
| | | 7.68% | | 7.61% | | 6.70% | | | | | |
| Total GNP | <i>% share to Edu</i> | 2887967.00 | 2.42% | 3119.899.00 | 2.24% | 3466400.00 | 2.08% | | | | |
| Total GDP | <i>% share to Edu.</i> | 2913514.00 | 2.40% | 3173685.00 | 2.20% | 3510500.00 | 2.06% | | | | |

Table 7.2 Federal Education Budget Pakistan

Rs in million

| AGENCY/YEAR | 1998-99 | | 1999-2000 | | 2000-01 | | 2001-02 | | 2002-03 | |
|------------------------|----------------|------------------|-----------------|-----------------|-----------------|-----------------|-----------------|----------------|------------|------------|
| | <i>Dev</i> | <i>Rec</i> | <i>Dev</i> | <i>Rec</i> | <i>Dev</i> | <i>Rec</i> | <i>Dev</i> | <i>Rec</i> | <i>Dev</i> | <i>Rec</i> |
| Ministry of Education | 910.357 | 3371.890 | 1676.755 | 3618.561 | 1243.000 | 3840.738 | 4550.204 | 4061.120 | | |
| Defence Division | 15.864 | 516.122 | 22.709 | 558.696 | 22.832 | 628.659 | 30.000 | 600.000 | | |
| Establishment Division | 6.031 | 111.580 | 7.425 | 123.048 | 0.700 | 158.934 | 25.000 | 240.000 | | |
| F.A.Tribal Areas | - | 993.700 | - | 1124.874 | - | 1284.247 | 200.000 | 1300.000 | | |
| F.A Northern Areas | - | 295.286 | - | 311.725 | - | 342.945 | 355.000 | 350.000 | | |
| Total | 932.252 | 5288.5783 | 1706.889 | 5736.904 | 1266.532 | 6255.523 | 5160.204 | 6551.12 | | |
| A.J.K. | 528.892 | 2273.218 | 265.000 | 1725.520 | 352.000 | 1900.000 | 457.000 | 2000.000 | | |

Source: P&D Wing, Ministry of Education

**Table 7.3 Development Budget
Ministry of Education** (Rs in Million)

| Year | Original ADP Allocation | %age increase | Revised | %age Increase | Release by Fin.Div |
|---------|-------------------------|---------------|----------|---------------|--------------------|
| 1995-96 | 1616.238 | | 1605.540 | | 947.970 |
| 1996-97 | 1604.492 | -0.73 | 1048.596 | -34.69 | 722.399 |
| 1997-98 | 913.513 | -43.07 | 846.123 | -19.31 | 807.977 |
| 1998-99 | 910.357 | -0.35 | 962.174 | 13.72 | 889.715 |
| 1999-00 | 1676.755 | 48.19 | 1008.946 | 4.86 | 999.906 |
| 2000-01 | 1243.00 | -25.87 | 1243.000 | 23.20 | 801.000 |
| 2001-02 | - | | | | - |

**Table 7.4 Development Education Budget during 9th Five Year Plan (1998-2003)
Provinces**

| Sub Sector | Year | Punjab | Sindh | NWFP | Balochistan | AJK | Federal | Total |
|---------------------|-----------|----------|----------|----------|-------------|---------|---------|----------|
| Primary Education | 1998-99 | 1850.465 | 1509.846 | 1389.714 | 83.496 | 95.850 | 83.412 | 5012.783 |
| | 99-2000 | 1131.726 | 251.452 | 1260.841 | 962.588 | 130.060 | 59.964 | 3796.631 |
| | 2000-01 | 1144.603 | 214.896 | 1202.301 | 169.320 | 194.505 | 91.915 | 3017.540 |
| | 2001-02 | 624.784 | 445.427 | 248.931 | 668.093 | 266.486 | 121.516 | 2391.237 |
| | 2002-03 | | | | | | | |
| Secondary Education | 1998-99 | 226.578 | 261.974 | 142.162 | 110.184 | 80.851 | 51.947 | 873.696 |
| | 99-2000 | 226.019 | 381.439 | 210.755 | 204.300 | 70.116 | 550.885 | 1643.514 |
| | 2000-01 | 320.00 | 333.282 | 178.920 | 433.949 | 96.577 | 161.924 | 1524.652 |
| | 2001-02 | 472.00 | 236.258 | 348.156 | 255.270 | 116.984 | 245.970 | 1676.638 |
| | 2002-03 | - | | | | | | |
| Teacher Education | 1998-99 | - | 103.800 | 1.800 | 33.185 | 10.304 | 45.548 | 194.637 |
| | 99-2000 | - | 127.500 | - | 113.286 | 11.700 | 47.150 | 299.636 |
| | 2000-2001 | - | 21.500 | - | 56.305 | 8.00 | 13.945 | 99.750 |
| | 2001-02 | - | 21.100 | - | - | 13.105 | 6.855 | 41.060 |
| | 2002-03 | - | | | | | | |
| Technical Education | 1998-99 | 155.261 | 179.030 | 24.358 | 8.088 | 1.100 | 59.679 | 427.516 |
| | 99-2000 | - | 224.600 | 45.130 | - | 4.600 | 60.000 | 334.330 |
| | 2000-01 | 34.983 | 297.937 | 92.221 | 60.000 | 0.200 | 81.000 | 566.348 |
| | 2001-2002 | - | 171.995 | 36.644 | 45.671 | 0.200 | 484.815 | 739.325 |
| | 2002-03 | - | | | | | | |
| College Education | 1998-99 | 184.94 | 147.280 | 20.234 | 91.261 | 38.865 | 36.015 | 517.849 |
| | 99-2000 | 118.212 | 146.070 | 20.202 | 91.492 | 45.602 | 59.680. | 481.258 |
| | 2000-2001 | 210.935 | 157.049 | 17.619 | 67.380 | 49.503 | 128.064 | 630.568 |
| | 2001-02 | 191.877 | 230.597 | 29.436 | 87.234 | 50.742 | 88.746 | 678.632 |
| | 2002-03 | - | | | | | | |

| Sub Sector | Year | Punjab | Sindh | NWFP | Balochistan | AJK | Federal | Total |
|-----------------------------|---------|--------|---------|--------|-------------|---------|---------|---------|
| Scholarship | 1998-99 | 78.034 | 0.500 | 8.657 | - | - | 167.417 | 254.608 |
| | 99-2000 | - | 1.593 | - | 4.000 | - | 179.333 | 184.926 |
| | 2000-01 | - | 1.750 | - | - | - | 78.331 | 80.081 |
| | 2001-02 | 8.00 | 1.000 | - | - | - | 59.327 | 68.327 |
| | 2002-03 | - | - | - | - | - | - | - |
| Special Education | 1998-99 | 19.535 | 0.800 | - | - | 0.030 | - | 20.365 |
| | 99-2000 | - | 0.900 | - | - | - | - | 0.900 |
| | 2000-01 | 11.397 | - | - | - | - | - | 11.397 |
| | 2001-02 | 5.893 | 0.200 | - | - | - | - | 6.093 |
| | 2002-03 | - | - | - | - | - | - | - |
| Literacy and Mass Education | 1998-99 | - | - | - | - | - | 141.250 | 141.250 |
| | 99-2000 | - | - | - | - | - | 150.878 | 150.878 |
| | 2000-01 | - | - | - | - | - | 150.900 | 150.900 |
| | 2001-02 | - | - | - | - | - | 650.000 | 650.000 |
| | 2002-03 | - | - | - | - | - | - | - |
| Libraries and Textbooks | 1998-99 | - | - | - | - | 300.000 | 4.655 | 304.655 |
| | 99-2000 | - | - | - | - | - | 1.176 | 1.176 |
| | 2000-01 | - | - | - | - | - | 7.130 | 7.130 |
| | 2001-02 | - | - | - | - | - | 2.606 | 2.606 |
| | 2002-03 | - | - | - | - | - | - | - |
| Miscellaneous | 1998-99 | 55.933 | 103.064 | 10.000 | 6.473 | - | 46.677 | 222.147 |
| | 99-2000 | 54.894 | 99.000 | 16.50 | 7.30 | 2.922 | 29.50 | 210.116 |
| | 2000-01 | 59.047 | 245.750 | 8.000 | 21.505 | 3.205 | 58.076 | 395.583 |
| | 2001-02 | 80.123 | 43.423 | 0.900 | - | - | 11.282 | 235.728 |
| | 2002-03 | - | - | - | - | - | - | - |

| Sub Sector | Year | Punjab | Sindh | NWFP | Balochistan | AJK | Federal | Total |
|------------------------------------|---------|----------|----------|----------|-------------|---------|----------|----------|
| University Education | 1998-99 | - | - | - | - | 1.892 | 273.757 | 275.649 |
| | 99-2000 | 0.500 | - | - | 6.000 | - | 538.189 | 544.689 |
| | 2000-01 | - | - | - | - | - | 471.715 | 471.715 |
| | 2001-02 | - | - | - | - | - | 777.087 | 777.087 |
| | 2002-03 | - | - | - | - | - | - | - |
| Other Federal Division | 1998-99 | - | - | - | - | - | - | - |
| | 99-2000 | - | - | - | - | - | - | - |
| | 2000-01 | - | - | - | - | - | - | - |
| | 2001-02 | - | - | - | - | - | - | - |
| | 2002-03 | - | - | - | - | - | - | - |
| Total Education Development Budget | 1998-99 | 2570.00 | 2306.294 | 1596.925 | 332.687 | 528.892 | 910.357 | 8245.155 |
| | 99-2000 | 1531.351 | 1232.554 | 1553.458 | 1388.966 | 265.000 | 1676.755 | 7648.054 |
| | 2000-01 | 1780.983 | 1272.164 | 1499.061 | 808.459 | 352.000 | 1243.000 | 6955.667 |
| | 2001-02 | 1382.677 | 1150.000 | 664.067 | 1072.268 | 447.517 | 2550.204 | 7266.733 |
| | 2002-03 | - | - | - | - | - | - | - |

Source: P&D Wing, Ministry of Education

**Table 7.5 Recurring Education Budget during 9th Five Year Plan (1998-2003)
Provinces**

| Sub Sector | Year | (Rs. in million) | | | | | | Total |
|---------------------|-----------|------------------|----------|----------|-------------|---------|---------|-----------|
| | | Punjab | Sindh | NWFP | Balochistan | AJK | Federal | |
| Primary Education | 1998-99 | 19885.744 | 8434.479 | 5033.704 | 1313.325 | 1200.00 | 168.612 | 36035.864 |
| | 99-2000 | 20113.303 | 7542.924 | 5519.357 | 2252.505 | 671.268 | 172.214 | 36271.571 |
| | 2000-01 | 20047.409 | 6030.614 | 6458.739 | 1880.597 | 712.176 | 178.009 | 35307.544 |
| | 2001-02 | 19595.304 | | | | | | |
| | 2002-03 | | | | | | | |
| Secondary Education | 1998-99 | 6610.599 | 3177.542 | 2668.495 | 309.620 | 712.050 | 241,536 | 13719.842 |
| | 99-2000 | 6174.059 | 3733.820 | 2540.780 | 1398.497 | 751.500 | 267.358 | 14866.014 |
| | 2000-01 | 6560.150 | 4634.174 | 2810.307 | 1713.032 | 805.337 | 264.719 | 16787.719 |
| | 2001-02 | 6798.768 | | | | | | |
| | 2002-03 | | | | | | | |
| Teacher Education | 1998-99 | 174.131 | 556.326 | 577.856 | | 54.788. | 11.030 | 1374.131 |
| | 99-2000 | 183,211 | 217.060 | 871.166 | 20.107 | 54.589 | 0.109 | 1346.242 |
| | 2000-2001 | 232,672 | 135.074 | 289.615 | 153.549 | 40.316 | 13.216 | 864.442 |
| | 2001-02 | 315.311 | | | | | | |
| | 2002-03 | | | | | | | |
| Technical Education | 1998-99 | 599.938 | 245.153 | 350.190 | | 5.937 | 12.028 | 1213.246 |
| | 99-2000 | 627.419 | 255.065 | 228.563 | 48.327 | 1.837 | 109.240 | 1270.991 |
| | 2000-01 | 627.419 | 297.777 | 209.445 | 13.724 | 2.916 | 72.639 | 1223.920 |
| | 2001-2002 | - | | | | | | |
| | 2002-03 | | | | | | | |
| College Education | 1998-99 | 2310.933 | 1141.796 | 761.110 | 401.198 | 212.558 | 245.055 | 5072.650 |
| | 99-2000 | 2394.099 | 1268.822 | 695.649 | 191.897 | 240.041 | 276.072 | 5066.580 |
| | 2000-2001 | 2639.357 | 1474.498 | 738.343 | 517.382 | 276.944 | 309.601 | 5956.125 |
| | 2001-02 | - | | | | | | |
| | 2002-03 | | | | | | | |

| Sub Sector | Year | Punjab | Sindh | NWFP | Balochistan | AJK | (Rs. in million) | Total |
|-----------------------------|---------|---------|----------|--------|-------------|--------|------------------|----------|
| | | | | | | | Federal | |
| Scholarship | 1998-99 | | | | 8.000 | 0.128 | 11.644 | 19.771 |
| | 99-2000 | | | | 9.200 | 0.128 | 17.124 | 26.492 |
| | 2000-01 | 62.425 | | | 9.500 | 31.385 | 2.710 | 106.020 |
| | 2001-02 | 119.781 | | | | | | |
| | 2002-03 | | | | | | | |
| Special Education | 1998-99 | 110.435 | 22.492 | | | | | 132.927 |
| | 99-2000 | 127.571 | | | | | | 127.571 |
| | 2000-01 | 129.697 | 30.128 | 24.052 | | | | 183.877 |
| | 2001-02 | 140.691 | | | | | | |
| | 2002-03 | | | | | | | |
| Literacy and Mass Education | 1998-99 | | | | | | 0.099 | 0.099 |
| | 99-2000 | | | | | | 4.400 | 4.400 |
| | 2000-01 | 26.972 | | | 0.751 | | | 27.723 |
| | 2001-02 | | | | | | | |
| | 2002-03 | | | | | | | |
| Libraries and Textbooks | 1998-99 | 25.059 | | | 28.018 | 32.158 | 14.577 | 99.812 |
| | 99-2000 | 25.225 | | | 3.235 | 4.157 | 9.106 | 41.723 |
| | 2000-01 | | | 12.875 | | 2.460 | 44.773 | 60.108 |
| | 2001-02 | | | | | | | |
| | 2002-03 | | | | | | | |
| Miscellaneous | 1998-99 | 253.784 | 402.648 | 80.00 | 1417.369 | | 313.999 | 2467.800 |
| | 99-2000 | 351.023 | | | 20.877 | 2.00 | 219.664 | 593.564 |
| | 2000-01 | 296.267 | 1203.813 | 32.245 | 1.221 | 40.853 | 268.613 | 1843.012 |
| | 2001-02 | 91.118 | | | | | | |
| | 2002-03 | | | | | | | |

(Rs. in million)

| Sub Sector | Year | Punjab | Sindh | NWFP | Balochistan | AJK | Federal | Total |
|------------------------------------|---------|-----------|-----------|-----------|-------------|----------|----------|-----------|
| University Education | 1998-99 | | | | | 55.599 | 2353.313 | 2408.912 |
| | 99-2000 | | | | | | 2543.274 | 2543.274 |
| | 2000-01 | 61.027 | | | | | 2686.458 | 2747.485 |
| | 2001-02 | | | | | | | |
| | 2002-03 | | | | | | | |
| Other Federal Division | 1998-99 | | | | | | | |
| | 99-2000 | | | | | | | |
| | 2000-01 | | | | | | | |
| | 2001-02 | | | | | | | |
| | 2002-03 | | | | | | | |
| Total Education Development Budget | 1998-99 | 29970.623 | 13980.436 | 9471.355 | 3477.530 | 2273.218 | 3371.218 | 62545.052 |
| | 99-2000 | 29995.910 | 13018.231 | 9855.515 | 3944.645 | 1725.520 | 3618.561 | 62158.382 |
| | 2000-01 | 30683.395 | 13806.078 | 10575.621 | 4289.756 | 1912.387 | 3840.738 | 65107.975 |
| | 2001-02 | 27060.973 | | | | | | |
| | 2002-03 | | | | | | | |

Source:- 1 P&D Wing, Ministry of Education

**Table 7.6 Allocations and Expenditures on Education (1st-9th Plan)
Pakistan**

(Rs. in million)

| Sub Sector | 1st Plan (1955-60) | | | 2nd Plan (1960-65) | | | 3rd Plan(1965-70) | | |
|---------------------------|--------------------|-------------|-----------|--------------------|-------------|-----------|-------------------|-------------|-----------|
| | Allocation | Expenditure | Shortfall | Allocation | Expenditure | Shortfall | Allocation | Expenditure | Shortfall |
| Primary Education | 51.400 | 21.200 | 30.200 | 78.00 | 18.800 | 59.200 | 67.510 | 24.740 | 42.770 |
| Secondary Education | 68.100 | 44.000 | 24.100 | 96.400 | 95.300 | 1.100 | 294.180 | 124.500 | 169.680 |
| Teacher Education | 23.300 | 4.900 | 18.400 | 17.400 | 17.500 | 0.100 | 36.010 | 15.050 | 20.960 |
| Technical Education | - | - | - | - | - | - | - | - | - |
| College Education | 31.800 | 29.500 | 2.300 | 17.00 | 68.300 | 51.300 | 64.040 | 64.160 | 0.120 |
| University Education | 48.500 | 36.500 | 1.600 | 47.500 | 58.900 | 11.400 | 91.950 | 59.690 | 32.260 |
| Scholarships | 2.600 | 1.00 | - | 18.700 | 49.100 | 30.400 | 91.00 | 76.850 | 14.150 |
| Literacy & Mass Education | - | - | - | - | - | - | - | - | - |
| Libraries & Text Books | - | - | 9.330 | - | - | - | - | - | - |
| Miscellaneous | 29.800 | 39.100 | 79.300 | 137.800 | 55.240 | 82.560 | 83.550 | 61.450 | 22.100 |
| Sub Total | 255.500 | 176.200 | 27.670 | 412.800 | 363.140 | 49.660 | 728.240 | 426.440 | 301.800 |
| Other Divisions | 49.430 | 21.760 | 106.970 | 77.200 | 58.650 | 8.450 | 358.360 | 154.170 | 204.190 |
| Total Education | 304.930 | 197.960 | | 490.00 | 448.790 | 41.210 | 1086.600 | 580.610 | 505.990 |

| Sub Sector | <i>Non Plan Period (1970-78)</i> | | | 5th Plan (1978-83) | | | 6th Plan(1983-88) | | |
|---------------------------|----------------------------------|---------------------|------------------|--------------------|--------------|-----------|-------------------|-------------|-----------|
| | <i>Allocation</i> | <i>Expenditure.</i> | <i>Shortfall</i> | Allocation | Expenditure. | Shortfall | Allocation | Expenditure | Shortfall |
| Primary Education | 473.930 | 443.760 | 30.170 | 3049.700 | 1423.100 | 1636.600 | 7000.00 | 3172.395 | 3827.605 |
| Secondary Education | 502.520 | 541.550 | 39.030 | 3257.00 | 1090.100 | 2166.900 | 4125.00 | 3231.021 | 893.979 |
| Teacher Education | 109.900 | 114.010 | 4.110 | 380.00 | 290.300 | 89.700 | 305.00 | 156.751 | 148.249 |
| Technical Education | - | - | - | - | - | - | 1315.00 | 857.948 | 457.052 |
| College Education | 314.810 | 374.010 | 59.210 | 767.00 | 536.600 | 230.400 | 1300.00 | 991.951 | 308.049 |
| University Education | 334.750 | 398.780 | 64.730 | 725.00 | 687.000 | 38.00 | 2100.00 | 1629.695 | 470.305 |
| Scholarships | 257.740 | 289.870 | 32.130 | 430.00 | 349.600 | 80.400 | 660.00 | 663.669 | 3.669 |
| Literacy & Mass Education | - | - | - | - | - | - | 750.00 | 724.093 | 25.907 |
| Libraries & Text Books | - | - | - | - | - | - | 455.00 | 128.319 | 326.681 |
| Miscellaneous | 519.540 | 379.500 | 22.040 | 287.00 | 526.100 | 239.100 | 570.00 | 3663.969 | 3093.969 |
| Sub Total | 2512.490 | 2,559.490 | 47.00 | 8895.7.00 | 4892.800 | 4002.900 | 18580.00 | 15219.811 | 3360.189 |
| Other Divisions | 485.650 | 843.160 | 357.510 | 1802.300 | 750.700 | 1051.600 | 250.00 | 1386.202 | 1136.202 |
| Total Education | 298.140 | 3,402.650 | 404.510 | 10698.000 | 5643.500 | 5054.500 | 18830.00 | 16606.013 | 2223.987 |

| Sub Sector | 7th Plan (1988-93) | | | 8th Plan (1993-98) | | | 9th Plan(1998-2003) | | |
|---------------------------|--------------------|-------------|-----------|--------------------|-------------|-----------|---------------------|---------------|-----------|
| | Allocation | Expenditure | Shortfall | Allocation | Expenditure | Shortfall | Allocation | Expenditure * | Shortfall |
| Primary Education | 10128.00 | 6393.165 | 3734.835 | 32669.00 | 15580.00 | 17089.00 | 69860.00 | 14218.191 | 41669.809 |
| Secondary Education | 6404.00 | 5507.312 | 896.688 | 16521.200 | 5180.00 | 11341.200 | 33140.00 | 67731.226 | 19780.774 |
| Teacher Education | 287.00 | 260.256 | 26.744 | 3360.00 | 490.00 | 2870.00 | 2000.00 | 635.083 | 964.917 |
| Technical Education | 2000.00 | 943.166 | 1056.834 | 2447.00 | 1430.00 | 1017.00 | 5000.00 | 2067.512 | 1932.488 |
| College Education | 615.00 | 1730.536 | 1115.536 | 2507.500 | 2170.00 | 337.500 | 2000.00 | 2308.307 | 708.307 |
| University Education | 1800.00 | 1890.835 | 90.835 | 4100.00 | 1630.00 | 2470.00 | 4000.00 | 2069.150 | 1130.850 |
| Scholarships | 760.00 | 867.117 | 107.117 | 1400.00 | 1220.00 | 180.00 | 1500.00 | 587.942 | 612.058 |
| Literacy & Mass Education | 300.00 | 510.308 | 210.308 | 1750.00 | 200.00 | 1550.00 | 1000.00 | 1093.028 | 75.567 |
| Libraries & Text Books | 86.00 | 26.850 | 59.150 | 200.00 | - | 200.00 | 300.00 | 315.567. | 263.574 |
| Miscellaneous | 150.00 | 1216.438 | 1066.438 | 3877.00 | 1570.00 | 2307.00 | 1000.00 | 1063.574 | 64750.420 |
| Sub Total | 22530.00 | 19345.983 | 3184.017 | 68831.700 | 29470.00 | 39361.700 | 119800.00 | 31089.580 | 525.561 |
| Other Divisions | 154.776 | 880.954 | 726.178 | 200.00 | 10.00 | 190.00 | 200.00 | 685.561 | 64224.561 |
| Total Education | 22684.776 | 20226.937 | 2457.839 | 69031.700 | 29480.00 | 39551.700 | 120000.00 | 31775.141 | 64224.859 |

Source:- P&D Wing, Ministry of Education
P & D Division

* Expenditure for full plan period not available

**Table 8.1 Population Projections by Gender and Age Group (1998-2015)
Pakistan (Total)**

| Year | 00-04 | | | 05-09 | | | 10-14 | | | 15-24 | | | 25-34 | | | 35-49 | | | 50+ | | | Total | | |
|------|-------|-------|------|-------|-------|------|-------|-------|------|-------|-------|-------|-------|-------|-------|-------|-------|-------|-------|-------|-------|--------|-------|-------|
| | Total | Male | Fem | Total | Male | Fem | Total | Male | Fem | Total | Male | Fem | Total | Male | Fem | Total | Male | Fem | Total | Male | Fem | Total | Male | Fem |
| 1998 | 20087 | 10353 | 9734 | 17468 | 9083 | 8385 | 17768 | 9302 | 8460 | 28016 | 14421 | 13595 | 18602 | 9565 | 9037 | 16413 | 8602 | 7812 | 14970 | 7848 | 7122 | 133324 | 69174 | 64151 |
| 1999 | 20146 | 10380 | 9767 | 17663 | 9167 | 8496 | 17909 | 9331 | 8529 | 29011 | 14956 | 14035 | 19406 | 9974 | 9433 | 17061 | 8930 | 8130 | 15258 | 7984 | 7274 | 136454 | 70772 | 65684 |
| 2000 | 20142 | 10374 | 9768 | 17854 | 9253 | 8602 | 18035 | 9448 | 8587 | 29947 | 15461 | 14486 | 20232 | 10396 | 9838 | 17750 | 9297 | 8471 | 15771 | 8234 | 7437 | 139531 | 72345 | 67189 |
| 2001 | 20001 | 10300 | 9702 | 18128 | 9382 | 8747 | 18078 | 9463 | 8615 | 30855 | 15956 | 14898 | 21088 | 10834 | 10255 | 18482 | 9647 | 8835 | 15900 | 8294 | 7607 | 142532 | 73876 | 68659 |
| 2002 | 19649 | 10119 | 9532 | 18577 | 9504 | 8970 | 17971 | 9388 | 8582 | 31762 | 16458 | 15304 | 21982 | 11294 | 10687 | 19264 | 10038 | 9224 | 16237 | 4855 | 7779 | 145442 | 75356 | 70078 |
| 2003 | 19200 | 9886 | 9314 | 19063 | 9851 | 9213 | 17816 | 9281 | 8532 | 32627 | 16941 | 15684 | 22901 | 11771 | 11131 | 20087 | 10450 | 9637 | 16593 | 8631 | 7962 | 148287 | 76812 | 71473 |
| 2004 | 18758 | 9659 | 9097 | 19458 | 10051 | 9409 | 17709 | 9201 | 8507 | 32462 | 17374 | 16027 | 23836 | 12259 | 11580 | 20949 | 10880 | 10069 | 16979 | 8821 | 5859 | 151091 | 78246 | 72848 |
| 2005 | 18431 | 9491 | 8940 | 19634 | 10136 | 9498 | 17752 | 9205 | 8547 | 34048 | 17731 | 16315 | 24778 | 12749 | 12030 | 21848 | 11330 | 10518 | 17413 | 9037 | 8377 | 153904 | 79679 | 74225 |
| 2006 | 18224 | 9384 | 8840 | 19518 | 10073 | 9444 | 18032 | 9337 | 8695 | 34520 | 17991 | 16530 | 25739 | 13251 | 12488 | 22777 | 11791 | 10985 | 17888 | 9276 | 8615 | 156698 | 81103 | 75597 |
| 2007 | 18067 | 9303 | 8764 | 19196 | 9907 | 9288 | 18482 | 9562 | 3922 | 34850 | 18173 | 16679 | 26731 | 13771 | 12962 | 23739 | 12268 | 11471 | 18397 | 9534 | 8864 | 159462 | 82518 | 76950 |
| 2008 | 17950 | 9242 | 8708 | 18774 | 9690 | 9085 | 18972 | 9807 | 9166 | 35098 | 18305 | 16793 | 27726 | 14293 | 13434 | 24741 | 12764 | 11977 | 18943 | 9811 | 9133 | 162204 | 83912 | 78296 |
| 2009 | 17869 | 9200 | 8669 | 18361 | 9476 | 8885 | 19371 | 10007 | 9364 | 35525 | 18421 | 16905 | 28702 | 14808 | 13893 | 25792 | 13287 | 12504 | 19533 | 10108 | 9425 | 164952 | 85307 | 79645 |
| 2010 | 17817 | 9173 | 8645 | 18059 | 9319 | 8740 | 19549 | 10094 | 9455 | 35595 | 18552 | 17043 | 29630 | 15306 | 14324 | 26889 | 13845 | 13055 | 20170 | 10429 | 9740 | 167719 | 86718 | 81002 |
| 2011 | 17815 | 9172 | 8644 | 17874 | 9222 | 8651 | 19437 | 10033 | 9404 | 35927 | 18704 | 17221 | 30541 | 15802 | 14740 | 28074 | 14440 | 13635 | 20846 | 10768 | 10078 | 170514 | 88141 | 82373 |
| 2012 | 17865 | 9195 | 8669 | 17735 | 9148 | 8687 | 19120 | 9869 | 9251 | 26277 | 18857 | 17419 | 31456 | 16308 | 15148 | 29314 | 15071 | 14242 | 21558 | 11124 | 10435 | 173325 | 89572 | 83751 |
| 2013 | 17939 | 9234 | 8705 | 17636 | 9097 | 8541 | 18704 | 9655 | 9052 | 36617 | 19000 | 17618 | 32327 | 16791 | 15535 | 30599 | 15728 | 14869 | 22320 | 11504 | 10817 | 176142 | 91009 | 85137 |
| 2014 | 18007 | 9269 | 8739 | 17570 | 9061 | 8511 | 18295 | 9444 | 8853 | 36918 | 19123 | 17795 | 33108 | 17228 | 15882 | 31908 | 16401 | 15508 | 23140 | 11912 | 11228 | 178946 | 92438 | 86516 |
| 2015 | 18043 | 9286 | 8757 | 17535 | 9041 | 8495 | 17998 | 9290 | 8710 | 37146 | 19218 | 17929 | 33762 | 17587 | 16173 | 33227 | 17082 | 16147 | 24027 | 12354 | 11673 | 181738 | 93858 | 87884 |

Source: National Institute of Population Studies (NIPS) Islamabad.

**Table 8.2 Population Projections by Gender and Age Group (1998-2015)
Pakistan (Urban)**

| Year | 00-04 | | | 05-09 | | | 10-14 | | | 15-24 | | | 25-34 | | | 35-49 | | | 50+ | | | Total | | |
|------|-------|------|------|-------|------|------|-------|------|------|-------|------|------|-------|------|------|-------|------|------|-------|------|------|-------|-------|-------|
| | Total | Male | Fem | Total | Male | Fem | Total | Male | Fem | Total | Male | Fem | Total | Male | Fem | Total | Male | Fem | Total | Male | Fem | Total | Male | Fem |
| 1998 | 6173 | 3181 | 2992 | 5378 | 2786 | 2590 | 5473 | 2904 | 2571 | 8538 | 4414 | 4125 | 6338 | 3362 | 2975 | 6153 | 3309 | 2842 | 9272 | 2773 | 2498 | 43325 | 22729 | 20593 |
| 1999 | 6267 | 3227 | 3042 | 5524 | 2856 | 2668 | 5569 | 2954 | 2615 | 8932 | 4621 | 4310 | 6684 | 3544 | 3140 | 6470 | 3476 | 2934 | 5413 | 2843 | 2572 | 44858 | 23520 | 21341 |
| 2000 | 6339 | 3260 | 3080 | 5668 | 2924 | 2746 | 5666 | 3004 | 2662 | 9315 | 4825 | 4490 | 7044 | 3733 | 3312 | 6813 | 3654 | 3157 | 5572 | 2919 | 2652 | 46417 | 24318 | 22099 |
| 2001 | 6362 | 3269 | 3094 | 5845 | 3007 | 2838 | 5740 | 3040 | 2699 | 9696 | 5030 | 4667 | 7419 | 3929 | 3491 | 7877 | 3844 | 3331 | 5741 | 3004 | 2739 | 47981 | 25123 | 22859 |
| 2002 | 6312 | 3242 | 3069 | 6087 | 3126 | 2961 | 5767 | 3049 | 2717 | 10082 | 5236 | 4847 | 7811 | 4137 | 3674 | 7561 | 4045 | 3516 | 5918 | 3093 | 2824 | 49538 | 25830 | 23604 |
| 2003 | 6225 | 3199 | 3025 | 6346 | 3252 | 3093 | 5785 | 3051 | 2733 | 10462 | 5446 | 5016 | 8218 | 4352 | 3864 | 7971 | 5250 | 3711 | 6108 | 3189 | 2918 | 51114 | 26748 | 24361 |
| 2004 | 6141 | 3155 | 2985 | 6571 | 3363 | 3208 | 5825 | 3066 | 2759 | 10825 | 5643 | 5182 | 8640 | 4578 | 4061 | 8408 | 4484 | 3920 | 6320 | 3296 | 3021 | 52728 | 27586 | 25137 |
| 2005 | 6098 | 3134 | 2963 | 6712 | 3433 | 3282 | 5926 | 3112 | 2814 | 11162 | 5823 | 5337 | 9078 | 4811 | 4269 | 8871 | 4726 | 4145 | 6557 | 3419 | 3140 | 54404 | 28458 | 25948 |
| 2006 | 6094 | 3132 | 2961 | 6747 | 3448 | 3299 | 6121 | 3207 | 2913 | 11454 | 5981 | 1474 | 9540 | 5055 | 4485 | 9362 | 4978 | 4383 | 6821 | 3550 | 3271 | 56183 | 29350 | 26787 |
| 2007 | 6105 | 3137 | 2969 | 6707 | 3426 | 3277 | 6386 | 3340 | 3045 | 11711 | 6117 | 5593 | 10021 | 5310 | 4711 | 9876 | 5241 | 4634 | 7104 | 3693 | 3411 | 57911 | 30264 | 27642 |
| 2008 | 6133 | 3150 | 2983 | 6628 | 3389 | 3240 | 6670 | 3482 | 3188 | 11954 | 6248 | 5706 | 10518 | 5572 | 4947 | 10419 | 5519 | 4899 | 7410 | 3849 | 3563 | 59733 | 31208 | 28526 |
| 2009 | 6178 | 3174 | 3007 | 6554 | 3356 | 3204 | 6922 | 3608 | 3313 | 12206 | 6378 | 5829 | 11021 | 5840 | 5183 | 11002 | 5819 | 5182 | 7749 | 4018 | 3730 | 61632 | 32187 | 29447 |
| 2010 | 6245 | 3207 | 3038 | 6521 | 3334 | 3188 | 7087 | 3691 | 3397 | 12492 | 6523 | 5968 | 11528 | 6109 | 5417 | 11628 | 6141 | 5486 | 8121 | 4208 | 3913 | 63624 | 33213 | 23408 |
| 2011 | 6341 | 3255 | 3085 | 6529 | 3338 | 3192 | 7142 | 3716 | 3426 | 12820 | 6685 | 6133 | 12045 | 6390 | 5656 | 12303 | 6492 | 5812 | 8526 | 4413 | 4114 | 65705 | 34290 | 31419 |
| 2012 | 6462 | 3317 | 3145 | 6553 | 3348 | 3204 | 7123 | 3703 | 3417 | 13174 | 6860 | 6314 | 12581 | 6682 | 5900 | 13021 | 6864 | 6158 | 8958 | 4633 | 4325 | 67872 | 35407 | 32462 |
| 2013 | 6600 | 3388 | 3212 | 6593 | 3368 | 3224 | 7763 | 3674 | 3390 | 13543 | 3039 | 6504 | 13117 | 6974 | 6143 | 13779 | 7259 | 6521 | 9426 | 4871 | 4555 | 70120 | 36574 | 33550 |
| 2014 | 6739 | 3460 | 3280 | 6652 | 3399 | 3254 | 7009 | 3645 | 3364 | 13906 | 7215 | 6691 | 13633 | 7255 | 6379 | 14572 | 7672 | 6900 | 8937 | 5188 | 4807 | 72448 | 37775 | 34675 |
| 2015 | 6874 | 3528 | 3346 | 6735 | 3441 | 3294 | 6999 | 3639 | 3360 | 14246 | 7380 | 6865 | 14113 | 7514 | 6600 | 15397 | 8104 | 7294 | 10495 | 5413 | 5081 | 74860 | 39018 | 35840 |

Source: National Institute of Population Studies (NIPS) Islamabad.

**Table 8.3 Population Projections by Gender and Age Group (1998-2015)
Pakistan (Rural)**

| Year | 00-04 | | | 05-09 | | | 10-14 | | | 15-24 | | | 25-34 | | | 35-49 | | | 50+ | | | Total | | |
|------|-------|------|------|-------|------|------|-------|------|------|-------|-------|-------|-------|-------|------|-------|------|------|-------|------|------|--------|-------|-------|
| | Total | Male | Fem | Total | Male | Fem | Total | Male | Fem | Total | Male | Fem | Total | Male | Fem | Total | Male | Fem | Total | Male | Fem | Total | Male | Fem |
| 1998 | 13914 | 7172 | 6742 | 12090 | 6297 | 5795 | 12295 | 6398 | 5895 | 19478 | 10007 | 9470 | 12264 | 6203 | 6062 | 10260 | 5293 | 4070 | 9698 | 5075 | 4624 | 89999 | 46445 | 43558 |
| 1999 | 13879 | 7153 | 6725 | 12139 | 6311 | 5828 | 12340 | 6427 | 5914 | 20079 | 10335 | 9745 | 12722 | 6430 | 6293 | 10591 | 5454 | 5136 | 9845 | 5141 | 4702 | 91596 | 47252 | 44343 |
| 2000 | 13803 | 7114 | 6688 | 12186 | 6329 | 5856 | 12369 | 6444 | 5925 | 20632 | 10636 | 9996 | 13188 | 6663 | 6526 | 10937 | 5425 | 5314 | 9999 | 5215 | 4785 | 93114 | 48027 | 45090 |
| 2001 | 13639 | 7031 | 6608 | 12283 | 6375 | 5909 | 12338 | 6423 | 5916 | 21159 | 10926 | 10231 | 13669 | 6905 | 6764 | 11305 | 5803 | 5504 | 10159 | 5290 | 4868 | 94551 | 48753 | 45800 |
| 2002 | 13337 | 6877 | 6463 | 12490 | 6478 | 6009 | 12294 | 6339 | 5865 | 21680 | 11220 | 10461 | 14171 | 7157 | 7013 | 11703 | 5993 | 5708 | 10319 | 5362 | 4955 | 95904 | 49426 | 46474 |
| 2003 | 12975 | 6687 | 6289 | 12717 | 6599 | 6120 | 12031 | 6230 | 5799 | 22165 | 11495 | 10668 | 14683 | 7419 | 7267 | 12116 | 6192 | 5926 | 10485 | 5442 | 5044 | 97173 | 50064 | 47112 |
| 2004 | 12617 | 6504 | 6112 | 12887 | 6688 | 6201 | 11884 | 6135 | 5748 | 22577 | 11731 | 10845 | 15196 | 7681 | 7519 | 12543 | 6397 | 6149 | 10659 | 5525 | 5138 | 98363 | 50660 | 47711 |
| 2005 | 12333 | 6357 | 5977 | 12922 | 6703 | 6216 | 11826 | 6093 | 5733 | 22886 | 11908 | 10978 | 15700 | 7938 | 7761 | 12977 | 6604 | 6373 | 10856 | 5618 | 5237 | 99500 | 51221 | 48277 |
| 2006 | 12130 | 6253 | 5879 | 12771 | 6625 | 6145 | 11911 | 6130 | 5782 | 23066 | 12010 | 11056 | 16199 | 8196 | 8003 | 13415 | 6813 | 6602 | 10067 | 5726 | 5344 | 100560 | 51753 | 48810 |
| 2007 | 11962 | 6166 | 5795 | 12489 | 6481 | 6011 | 12096 | 6222 | 5877 | 23139 | 12056 | 11086 | 16710 | 8461 | 8251 | 13863 | 7027 | 6837 | 11293 | 5841 | 5453 | 101551 | 52254 | 49308 |
| 2008 | 11817 | 6092 | 5725 | 12146 | 6301 | 5845 | 12302 | 6325 | 5978 | 23144 | 12057 | 11087 | 17208 | 8721 | 8487 | 14322 | 7245 | 7078 | 11533 | 5962 | 5570 | 102471 | 52704 | 49770 |
| 2009 | 11691 | 6026 | 5662 | 11807 | 6125 | 5681 | 12449 | 6399 | 6051 | 23119 | 12043 | 11076 | 17680 | 8968 | 8710 | 14790 | 7468 | 7322 | 11784 | 6090 | 5695 | 103320 | 53120 | 50198 |
| 2010 | 11572 | 5969 | 5607 | 11538 | 5985 | 3552 | 12462 | 6403 | 6058 | 23103 | 12029 | 11075 | 18102 | 9197 | 8907 | 15271 | 7404 | 7569 | 12049 | 6221 | 5827 | 104095 | 53555 | 50594 |
| 2011 | 11474 | 5917 | 5559 | 11345 | 5884 | 5459 | 12295 | 6317 | 5978 | 23107 | 12019 | 11088 | 18496 | 9412 | 9084 | 15771 | 7948 | 7823 | 12320 | 6355 | 5964 | 104809 | 53851 | 50954 |
| 2012 | 11403 | 5878 | 5524 | 11162 | 5800 | 5383 | 11997 | 6166 | 5834 | 23103 | 11997 | 11105 | 18875 | 9426 | 9248 | 16293 | 8207 | 8034 | 12600 | 6491 | 6110 | 105453 | 54165 | 51298 |
| 2013 | 11339 | 5846 | 5493 | 11043 | 5729 | 5317 | 11641 | 5981 | 5662 | 23074 | 11961 | 11114 | 19210 | 9817 | 9392 | 16820 | 8469 | 8348 | 12894 | 6633 | 6262 | 106022 | 54435 | 51587 |
| 2014 | 11268 | 5809 | 5459 | 10918 | 5662 | 5257 | 11286 | 5799 | 5489 | 23012 | 11908 | 11104 | 19475 | 9974 | 9503 | 17336 | 8729 | 8609 | 13203 | 6784 | 6421 | 106498 | 54663 | 51841 |
| 2015 | 11169 | 5758 | 5411 | 10800 | 5600 | 5201 | 10999 | 5651 | 5350 | 22900 | 11838 | 11064 | 19649 | 10073 | 9573 | 17830 | 8978 | 4853 | 13532 | 6941 | 6592 | 106878 | 54840 | 52044 |

Source: National Institute of Population Studies (NIPS) Islamabad.

- * **Definitions of Literacy**
- * **EFA Core Indicators**

Definitions of Literacy

| | Census Year | Definition of Literacy | Literacy Rate |
|----|--------------------|--|----------------------|
| a) | 1951 Census | One who can read a clear print in any language. | 16.4% |
| b) | 1961 Census | One who is able to read with understanding a simple letter in any language | 16.3% |
| c) | 1972 Census | One who is able to read and write in some language with understanding. | 21.7% |
| d) | 1981 Census | One who can read newspaper and write a simple letter | 26.2% |
| e) | 1998 Census | One who can read a newspaper and write a simple letter, in any language. | 45% |
| f) | 2002 | One who can read and write with understanding in any language and make simple calculations | Data not available |

Note:- In Pakistan literacy rate of 10+ age group is considered as Adult Literacy Rate.

EFA Core Indicators

- Indicator 1 Gross enrolment in early childhood development programmes, including public, private, and community programmes, expressed as a percentage of the official age-group concerned, if any, otherwise the age-group 3 to 5.
- Indicator 2 Percentage of new entrants to primary grade 1 who have attended some form of organized early childhood development programme.
- Indicator 3 Apparent (gross) intake rate: new entrants in primary grade 1 as a percentage of the population of official entry age.
- Indicator 4 Net intake rate: new entrants in primary grade 1 who are of the official primary school entrance age as a percentage of the corresponding population.
- Indicator 5 Gross enrolment ratio
- Indicator 6 Net enrolment ratio
- Indicator 7 Public current expenditure on primary education (a) as a percentage of GNP; and (b) per pupil, as a percentage of GNP per capita.
- Indicator 8 Public expenditure on primary education as a percentage of total public expenditure on education
- Indicator 9 Percentage of primary school teachers having the required academic qualifications.
- Indicator 10 Percentage of primary school teachers who are certified to teach according to national standards.
- Indicator 11 Pupil teacher ratio
- Indicator 12 Repetition rates by grade
- Indicator 13 Survival rate to grade 5 (percentage of a pupil cohort actually reaching grade 5).

- Indicator 14 Coefficient of efficiency (ideal number of pupil years needed for a cohort to complete the primary cycle, expressed as a percentage of the actual number of pupil - years).
- Indicator 15 Percentage of pupils having reached at least grade 4 of primary schooling who master a set of nationally defined basic learning competencies.
- Indicator 16 Literacy rate of 15-24 year old
- Indicator 17 Adult literacy rate: Percentage of the population aged 15+ that is literate.
- Indicator 18 Literacy Gender Parity Index: ratio of female to male literacy rates.