

Punjab

Demographic Profile

In 2001, Punjab had an estimated total population of 79,125,000 (55.5% of the total population of the country), residing in 34 districts. In terms of population, with an average population density of 358.5 persons per square kilometer, Punjab has 31.3% of its population living in urban areas. The average household size is 6.9 persons per household.

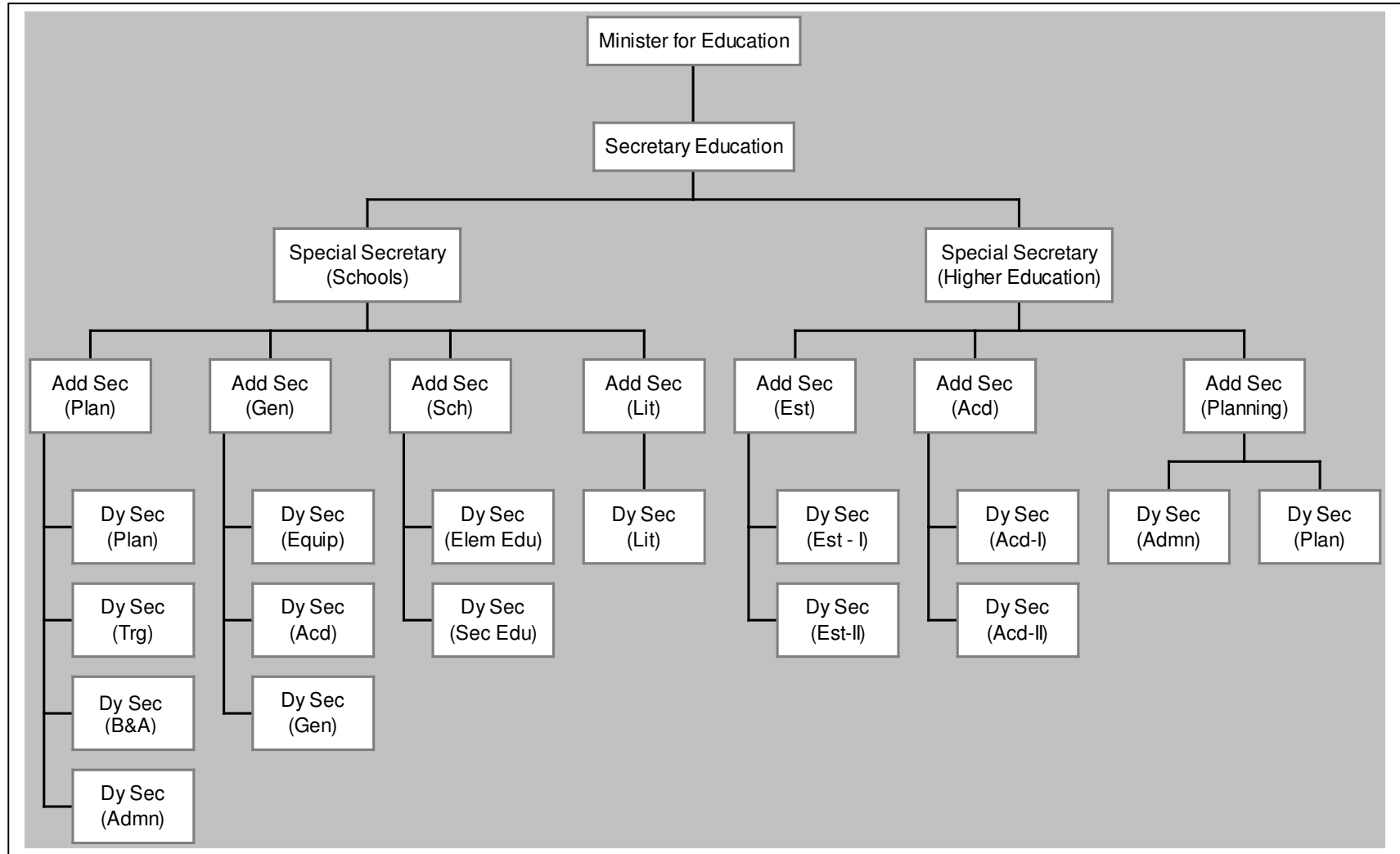
Administrative Structure in the Education Department

The guiding principles to govern the functioning of the devolved educational set-up within the Punjab have been well articulated. These principles clearly lay out the structures and functions of different levels with emphasis on emerging priorities like various levels of education, types of city/district governments, literacy, community participation, and monitoring.

Within this framework, the province has been assigned the responsibilities for:-

- Policy/guideline formulation
- M&E, specifically performance-base
- Inter-district transfers
- Quality assurance
- Curricula development
- Teachers' training
- Coordination/consolidation of budget
- Approval of schemes beyond Rs 20 million

Punjab Education Department



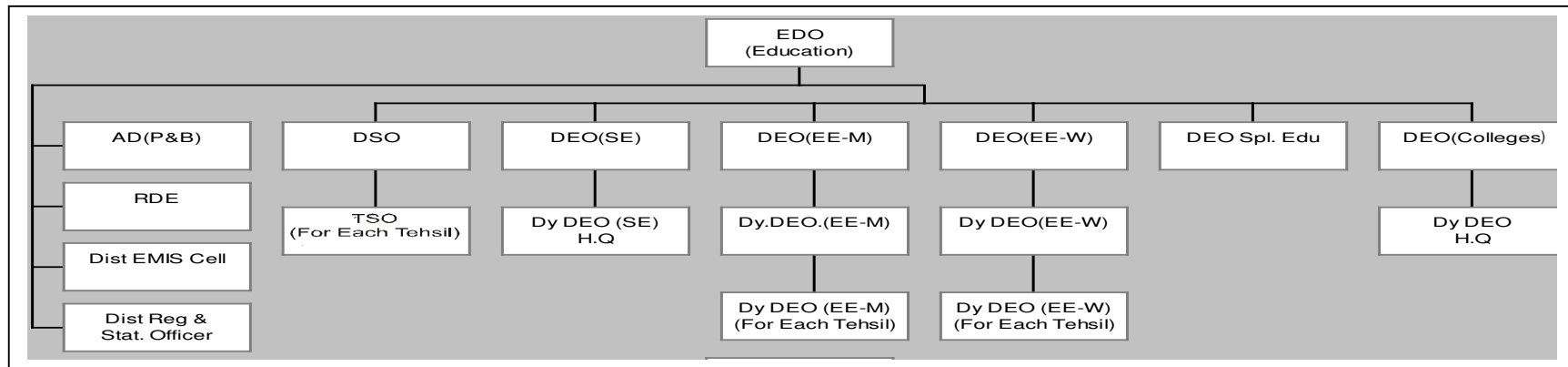
The districts have been entrusted with the following tasks:

- Recruitment of teachers up to secondary school level
- Recruitment of non-teaching staff from BS-5 to BS-15
- Authority for E&D cases for the above two activities
- Grant of leave (all kinds, except ex-Pakistan) for BS-1 to BS-18
- Leave for Hajj and Umra
- Non-development budget and re-appropriation directly by the districts
- Registration of private schools
- Conduct of Middle Standard Examination
- EDO to be ex-officio member of Board of Intermediate and Secondary Education
- Internal audit and technical inspections of institutions
- Sanctioning of pensions upto BS-16
- Identification, preparation and execution of Annual Development Plan (ADP)

The Literacy Department has been separated from the District Education Department according to the provisions of the Local Government Ordinance 2001. Independent set-up for literacy has been created at the provincial level. An Additional Secretary (Literacy) has been posted at the Secretariat to oversee the functioning of the district literacy departments. The Executive District Officers (Literacy) have been posted at all districts of the province and efforts are underway to post the other relevant staff within the districts.

The Literacy Department, under the provisions of the Part C of the First Schedule of the Local Government Ordinance, 2001, will be responsible for literacy campaigns, continuing education and vocational education.

District Education Department



District Population

In Punjab, Lahore, the provincial metropolis, is the largest city of the province with a population of 6,791,000 persons; Hafizabad, with 895,000 persons, is the district with the least population in Punjab. Punjab has several major districts with large populations. These include Lahore, Rawalpindi, Faisalabad, Multan, and Sahiwal. In the context of education, districts with very high (around 0.5 million) primary-school aged population are Lahore, Faisalabad, Sheikhupura and Rahim Yar Khan. Districts with high (over 0.5 million) middle and high school aged population are Lahore and Rawalpindi (Table P.1).

Schools, Enrolment and Teachers

Punjab has a total of 8,233 mosque, 44,188 primary, 5,978 middle and 4,459 higher level schools (Table P.2). Across districts, mosque schools range between 702 (in Rahim Yar Khan) to 26 (in Lahore Cantonment). Rahim Yar Khan, too, has the highest number of primary schools (2,437) but Faisalabad has the highest primary enrolment (276,421) as well as the highest number of primary school teachers (7,860).

School Participation

For the districts of Punjab, the primary school participation rate varies between 74.78% (Gujrat) and 23.69% (D.G.Khan). Districts with high (over 60%) participation rates include Rawalpindi, Jhelum, Chakwal, Gujrat, Mandi Bahauddin, Sialkot and Lahore (Table P.3). Districts with least participation rates (below 30%) are D.G. Khan, Rajanpur and Muzaffargarh.

Literacy Rates and Ranking

Literacy rates in Punjab districts range between 70.45% (Rawalpindi) and 20.73% (Rajanpur). Districts with literacy rates above 50% include Lahore, Gujrat, Jhelum, Gujranwala, Faisalabad, Chakwal and Sialkot (Table P.4.1). Districts of very low literacy rates (below 30%) include Sargodha, Lodhran, Muzaffargarh and Rajanpur.

Female literacy rates (15+) are high (over 50%) in only two Punjab districts i.e., Lahore (57%) and Rawalpindi (54%). For females (10-14 years), literacy rates are better, with several districts achieving a literacy rate of over 60% (Table P.4.2). These include Lahore, Rawalpindi, Sialkot, Gujrat, Jhelum, Gujranwala, Faisalabad, Chakwal and Mandi Bahauddin.

In Punjab, ranking of district displays a wide range: if Islamabad, the capital city is included, with its literacy rate of 72.38%, it tops the ranking list, closely followed by Rawalpindi at 70.45% (Table P.4.3). Planners should, however, focus more on the lower-ranked districts of Rajanpur, Muzaffargarh, Lodhran and D.G. Khan.

Other Social Indicators

Of its total population, Punjab has an average of 42.5% in the age group of 15 years (Table P.5). Five districts have a ratio of young population i.e., with over 45% of population aged below 15 years: D.G.Khan; Khushab; Muzaffargarh; Rahim Yar Khan and Rajanpur. There are only three districts which have a high (over 50%) urban population i.e., Lahore, Rawalpindi and Gujranwala. Household size is, generally, very high ranging between 7.8 persons per household (D.G. Khan) to 5.7 persons per household (Chakwal).

Population Projections (1998-2015)

To facilitate planning of the various sectors of the economy, the National Institute for Population Studies (NIPS), Islamabad has generated 15-year population projections for each province, separately for urban and rural population by different age groups (Tables P.6.1-P.6.3).

Table P.1 District Population Punjab (1998)

District	Population (5-9 years) Total		Population (10-14)		Population (15+)	
	Total	Total	Female	Total	Female	
Attock	175822	164815	80097	771043	393069	
Rawalpindi	446658	831936	213786	3839751	1009298	
Jhelum	129878	121836	58746	565149	288509	
Chakwal	146372	139543	67841	660619	359347	
Sargodha	398241	343860	163951	1562116	761103	
Bhakkar	171569	141865	67853	582764	282408	
Khushab	132203	113239	54543	536650	275574	
Mianwali	165724	140533	67496	595581	303400	
Faisalabad	785067	333501	333501	3215115	1532315	
Jhang	435090	353896	166378	1651535	794047	
Toba Tek Singh	240332	211355	101342	951842	466154	
Gujranwala	505867	459883	222887	1955381	928088	
Hafizabad	121681	103932	49470	489718	234359	
Gujrat	290755	268904	129432	1218310	619937	
Mandi Bahauddin	170797	147771	70345	686416	338366	
Sialkot	394037	357311	172319	1589085	776991	
Narowal	195331	175705	85406	704148	35766	
Lahore	831936	831936	401048	3839751	1786577	
Kasur	376300	319345	152680	1317566	620380	
Okara	342641	278711	130510	1289372	610728	
Sheikhupura	502341	435474	209237	1893236	899511	
Vehari	330026	273810	130294	1186036	571635	
Sahiwal	274500	232394	110240	1087758	525584	
Pakpattan	200703	164134	76699	736757	354711	
Multan	498255	414261	196620	1757032	825548	
Khanewal	326027	268221	127521	1178028	566624	
Lodhran	199103	155467	73151	632890	303910	
Dera Ghazi Khan	297694	220929	101728	836765	403154	
Rajapur	200718	135115	59668	570741	271200	
Layyah	186680	154709	74128	604036	292547	
Muzaffargarh	472666	353719	162563	1360317	652756	
Bahawalpur	401406	316754	148032	1353146	636905	
Bahawalnagar	319195	263256	124922	1179478	568592	
RahimYar Khan	539221	395438	182196	1694541	816407	

Source: Population Census Organization, District Census Reports (DCRs)

Note: Roughly 52% population of 5-9 years age group is male and 48% is female.

**Table P.2 Number of Schools, Enrolment and Teachers in Public Sector Schools
Punjab Districts 1999-2000**

Districts	<i>Mosque</i>			Primary level			<i>Middle level</i>			High level		
	<i>School</i>	<i>Enrol.</i>	<i>Teacher</i>	School	Enrol	Teacher	<i>School</i>	<i>Enrol</i>	<i>Teacher</i>	School	Enrol	Teacher
Bahawalnagar	240	8781	241	1900	86238	4927	287	36545	2648	156	67507	3313
Bahawalpur	332	14803	348	1620	136314	4411	195	33451	2129	123	66194	2850
Rahimyar Khan	702	29972	658	2437	167860	5798	266	47872	2522	174	102491	3969
D.G Khan	475	20951	600	1310	106443	3932	117	23248	1228	98	33377	1764
Layyah	360	21858	458	961	78401	2657	147	23998	1342	82	32619	1571
Muzaffargarh	352	19587	424	1533	147432	4650	145	32262	1509	102	50676	2044
Rajanpur	170	13038	203	964	113182	2503	62	15470	606	50	38395	985
Faisalabad	151	7612	154	1932	276421	7860	389	130061	4580	333	428173	13838
Jhang	348	15738	369	2521	202425	7126	212	45328	2299	164	83585	3197
T.T Sing	126	6607	126	944	137307	3852	212	55852	2285	124	71208	2497
Gujranwala	183	12336	350	1478	159446	5172	180	66446	2424	164	123822	4261
Gujrat	293	14292	310	1231	141394	4504	168	43593	1876	190	108178	3799
Sialkot	515	16121	445	1948	118951	4188	201	39164	1674	149	111270	3939
Narowal	297	13040	314	1278	120625	4591	117	27779	1320	97	56003	2058
Hafizabad	141	9501	238	673	49408	1599	45	9535	414	43	24999	959
Mandi Bahauddin	157	7911	169	722	87846	2543	100	31570	1141	76	45964	1498
Kasur	121	4935	100	1291	129070	3945	227	58977	2374	148	81192	2837
Lahore City	90	4378	110	360	52051	1940	68	20721	982	141	987798	3921
Okara	342	13750	389	1197	112727	3734	212	45911	2130	123	73989	2562

Districts	Mosque			Primary level			Middle level			High level		
	School	Enrol.	Teacher	School	Enrol	Teacher	School	Enrol	Teacher	School	Enrol	Teacher
Sheikhupura	239	15990	435	1987	183430	5849	304	75879	3178	167	103665	3302
Lahore Cantt	26	1335	29	490	66355	2174	78	28116	1130	90	68197	2330
Multan	251	11256	239	1272	134118	4409	160	50967	2018	132	103939	3442
Vehari	224	9315	231	1159	133518	3984	152	34534	1584	103	56530	2083
Khanewal	237	11600	256	1122	130909	4059	226	54556	2342	134	85122	2925
Lodhran	95	4428	85	757	71640	2147	62	13062	640	59	30091	1195
Sahiwal	88	4252	92	911	117837	3260	207	55304	2357	150	89836	3250
Pakpattan	150	7574	139	713	87327	2319	74	20952	821	62	38794	1290
Attock	176	6753	181	1015	102663	3225	122	34837	1414	104	63430	2133
Jhelum	144	4511	186	759	73119	2531	112	31081	1218	87	52161	1764
Rawalpindi	129	4621	128	1770	164724	6260	267	64488	3133	274	131998	5081
Chakwal	143	3611	103	895	76577	2775	188	46583	2047	130	74511	2526
Bhakkar	340	12126	337	1094	76769	2769	121	23235	1146	71	30390	1160
Khushab	188	5541	200	834	74378	2674	102	25003	1172	80	35161	1488
Mianwali	180	6168	206	1270	92375	3554	145	35881	1575	77	40418	1423
Sargodha	228	9185	236	1838	116583	6319	308	71101	3380	193	94141	3702
PUNJAB	8233	374477	9089	44188	4185843	138240	5978	1453301	64638	4459	2796824	100956

Source: Punjab Education Management Information System.

Note: Include Punjab Government, Federal Government and other Public Sector School data.

Table P.3 Participation of School-going Children (5-9 years) - Punjab (1998)

District	Population (5-9 years)	School Going Upto Primary Level	Participation Rate 1998 (%)	District	Population (5-9 years)	School Going Upto Primary Level	Participation Rate 1998 (%)
Attock	175822	91029	51.77	Sialkot	394937	292715	74.12
Rawalpindi	446658	332982	74.55	Narowal	195331	110472	56.56
Jhelum	129878	95379	73.44	Lahore	831936	546198	65.65
Chakwal	146372	88710	60.61	Kasur	376300	156472	41.58
Sargodha	398241	211872	53.2	Okara	342641	149834	43.73
Bhakkar	171569	63572	37.05	Sheikhupura	502341	249129	40.59
Khushab	132203	61550	46.56	Vehari	330026	129491	39.24
Mianwali	165724	81905	49.42	Sahiwal	274500	118291	43.09
Faisalabad	785067	456548	58.15	Pakpattan	200703	70225	34.99
Jhang	435093	199798	45.92	Multan	498255	215483	43.25
Toba Tek Singh	240332	139539	58.06	Khanewal	326027	131187	40.24
Gujranwala	505867	292733	57.87	Lodhran	199103	62903	31.59
Hafizabad	121681	67016	55.08	D.G.Khan	297694	70523	23.69
Gujrat	290755	217418	74.78	Rajanpur	200718	50190	25.01
Mandi Bahauddin	170797	105098	61.53	Layyah	186680	70319	37.67
Muzaffargarh	472666	129959	27.49	Bahawalnagar	319195	123385	38.66
Bahawalpur	401406	139172	34.67	Rahim Yar Khan	539221	173083	32.1

Source:- Population Census Organization

**Table P.4.1 Literacy Rate (10 Years & above) by Gender and Location
Punjab Districts 1998 and 2001**

Punjab	Years	All Areas			Urban			Rural		
		Both Sexes	Male	Female	Both Sexes	Male	Female	Both Sexes	Male	Female
	1998	46.56	57.20	35.10	64.48	70.94	57.23	37.95	50.40	24.78
	2001	51.13	61.83	39.97	68.26	74.15	61.90	42.49	55.36	29.40
District										
Attock	1998	49.27	66.94	31.99	69.41	80.83	56.03	43.65	62.66	25.87
	2001	58.35	76.50	42.61	74.69	85.88	62.56	52.59	72.66	36.45
Rawalpindi	1998	70.45	81.19	59.18	76.01	82.21	68.84	63.94	79.86	49.02
	2001	76.81	85.99	68.48	80.55	85.66	75.19	72.05	86.23	61.57
Jhelum	1998	63.92	77.66	50.47	77.21	84.85	68.00	58.55	74.31	44.38
	2001	70.71	83.89	59.76	82.40	89.82	73.47	65.45	80.38	53.59
Chakwal	1998	56.72	73.42	42.15	70.72	79.82	61.81	54.75	72.45	39.55
	2001	-	-	-	-	-	-	-	-	-
Sargodha	1998	24.90	35.90	12.80	41.50	51.60	30.10	19.30	30.50	7.00
	2001	53.32	65.92	41.60	70.36	77.47	63.41	24.68	60.97	70.71
Bhakkar	1998	34.17	49.72	17.55	55.13	67.65	41.54	30.07	46.18	12.91
	2001	-	-	-	-	-	-	-	-	-
Khushab	1998	40.50	59.83	21.77	51.64	65.91	37.39	36.70	57.71	16.55
	2001	-	-	-	-	-	-	-	-	-
Mianwali	1998	42.76	63.78	22.07	57.07	73.49	39.93	39.79	60.98	17.29
	2001	50.29	73.83	28.92	62.29	78.57	46.61	48.29	72.39	23.83
Faisalabad	1998	51.94	60.85	42.16	64.18	69.81	57.89	42.53	53.30	30.27
	2001	57.75	65.82	49.87	68.59	73.24	63.92	47.49	58.56	36.40
Jhang	1998	37.12	51.53	21.43	57.50	66.82	47.29	30.73	46.72	13.36
	2001	42.49	58.06	26.36	61.34	69.62	53.24	36.96	55.08	18.68
Toba Tek Singh	1998	50.50	61.34	39.13	63.15	77.70	55.19	47.51	59.12	35.34
	2001	-	-	-	-	-	-	-	-	-
Gujranwala	1998	56.55	63.60	48.80	63.97	68.78	58.59	48.65	57.99	38.59
	2001	65.44	71.06	60.69	69.44	73.08	65.91	59.58	67.60	54.24

	Years	All Areas			Urban			Rural		
		Both Sexes	Male	Female	Both Sexes	Male	Female	Both Sexes	Male	Female
Hafizabad	1998	40.74	51.79	28.67	54.68	63.13	45.47	35.47	47.52	22.32
	2001	-	-	-	-	-	-	-	-	-
Gujrat	1998	62.18	72.98	51.55	72.79	79.28	65.37	57.93	70.17	46.57
	2001	73.01	82.06	67.53	78.72	84.12	73.37	89.80	80.24	65.12
Mandi Bahauddin	1998	47.44	58.77	35.64	67.08	75.35	58.64	43.83	55.76	31.36
	2001	-	-	-	-	-	-	-	-	-
Sialkot	1998	58.92	65.96	51.52	72.32	75.98	68.19	53.84	61.98	45.52
	2001	68.41	76.47	65.67	77.14	89.81	74.47	64.80	70.47	63.06
Narowal	1998	52.65	65.60	39.76	67.46	75.45	69.32	50.52	64.17	36.99
	2001	-	-	-	-	-	-	-	-	-
Lahore	1998	64.66	69.05	59.68	69.15	72.73	65.10	41.70	50.35	31.74
	2001	68.49	72.27	64.52	72.75	75.64	69.73	49.53	57.22	42.91
Kasur	1998	36.21	47.64	23.44	49.36	47.20	40.60	32.15	44.69	18.12
	2001	42.19	54.18	29.51	54.79	61.54	48.28	38.40	51.93	23.75
Okara	1998	37.79	49.27	24.99	58.74	68.18	47.35	31.26	43.08	18.39
	2001	-	-	-	-	-	-	-	-	-
Sheikhupura	1998	43.78	53.28	33.33	57.56	64.34	50.09	38.78	49.26	27.25
	2001	51.15	60.09	43.13	62.24	68.11	56.68	46.13	56.43	36.84
Vehari	1998	36.79	49.4	23.18	56.66	66.12	46.48	32.9	46.13	18.6
	2001	42.74	56.12	29.40	61.73	70.69	52.88	38.81	53.13	24.57
Sahiwal	1998	43.9	54.72	32.25	65.76	70.91	60.1	39.42	51.36	26.62
	2001	51.83	62.39	42.25	71.66	75.20	68.87	48.13	60.13	38.38
Pakpattan	1998	34.7	46.98	21.33	57.63	66.08	48.47	30.75	43.7	16.65
	2001	-	-	-	-	-	-	-	-	-
Multan	1998	43.38	53.25	32.28	60.9	67.51	53.21	29.47	41.61	16.18
	2001	49.86	59.20	40.84	66.00	71.59	60.42	33.45	46.11	20.78
Khanewal	1998	39.94	53.63	25.11	60.68	70.55	49.97	35.38	49.9	29.64
	2001	-	-	-	-	-	-	-	-	-

		<i>All Areas</i>			<i>Urban</i>			<i>Rural</i>		
		<i>Both Sexes</i>	<i>Male</i>	<i>Female</i>	<i>Both Sexes</i>	<i>Male</i>	<i>Female</i>	<i>Both Sexes</i>	<i>Male</i>	<i>Female</i>
Lodhran	1998	29.9	42.68	15.96	47.66	59.24	35.05	26.83	39.82	12.65
	2001	-	-	-	-	-	-	-	-	-
Dera Ghazi Khan	1998	30.61	42.09	18.05	61.79	69.34	53.63	25	37.22	11.58
	2001	38.13	50.95	25.71	70.14	75.23	68.11	31.84	46.42	17.17
Rajapur	1998	20.73	29.01	11.35	49.95	60.07	38.93	15.47	23.55	6.26
	2001	-	-	-	-	-	-	-	-	-
Layyah	1998	38.68	52.98	23.39	62.45	72.6	51.49	34.92	49.86	18.95
	2001	-	-	-	-	-	-	-	-	-
Muzaffargarh	1998	28.45	40.87	14.77	55.53	64.83	44.92	24.12	36.96	10.05
	2001	31.93	45.08	18.27	59.23	67.90	49.85	27.14	40.96	12.85
Bahawalpur	1998	35.03	44.86	23.95	57	65.28	47.12	26.31	36.44	15.13
	2001	41.15	51.50	30.27	62.40	70.04	53.59	32.11	43.17	21.44
Bahawalnagar	1998	35.07	45.52	23.78	52.86	61.22	43.86	30.81	41.77	18.86
	2001	40.01	50.41	29.98	59.81	66.83	54.27	35.11	46.38	23.68
Rahim Yar Khan	1998	33.09	43.4	21.82	57.03	64.97	48.45	26.92	37.88	14.91
	2001	36.91	47.61	25.90	59.86	67.40	52.19	30.64	42.25	18.71

Sources: Population Census Organization
UNESCO; Islamabad.

Table P.4.2 Population and Literacy Rates Punjab Districts (1998)

District	Female				Total				Female				Total			
	Population 15+	Literacy Rates	Illiterate 15+	Illiteracy Rate	Population 15+	Literacy Rate	Illiterate 15+	Illiteracy Rate	Population 10-14	Literacy Rate	Illiterate 10-14	Illiteracy Rate	Population 10-14	Literacy Rates	Illiterate 10-14	Illiteracy Rate
Lahore	1,786,577	57%	771,567	43%	3,839,751	63%	1,421,638	37%	401,048	72%	110,389	28%	831,936	72%	229,215	28%
Rawalpindi	1,009,298	54%	460,344	46%	2,064,722	68%	670,162	32%	213,786	82%	38,919	18%	441,357	84%	69,669	16%
Sialkot	776,991	47%	412,159	53%	1,589,085	56%	703,653	44%	172,319	72%	48,063	28%	357,311	73%	95,977	27%
Gujrat	619,937	46%	337,199	54%	1,218,310	58%	513,255	42%	129,432	80%	25,849	20%	268,904	82%	49,195	18%
Jhelum	288,509	45%	158,602	55%	565,149	60%	226,005	40%	58,746	77%	13,422	23%	121,836	82%	21,905	18%
Gujranwala	928,088	44%	517,142	56%	1,955,381	54%	906,008	46%	222,887	68%	72,136	32%	459,883	69%	143,502	31%
Faisalabad	1,532,315	38%	950,475	62%	3,215,115	49%	1,634,920	51%	333,501	61%	128,707	39%	697,854	65%	245,822	35%
Chakwal	359,347	36%	229,272	64%	660,619	52%	319,963	48%	67,841	74%	17,854	26%	139,543	81%	26,313	19%
Tobateksingh	466,154	34%	305,634	66%	915,842	47%	504,959	53%	101,342	61%	39,828	39%	211,355	66%	70,808	34%
Narowal	355,766	33%	237,795	67%	704,148	47%	371,339	53%	85,406	67%	27,962	33%	175,705	74%	45,303	26%
Mandi Bahuddin	338,366	30%	236,867	70%	686,416	43%	391,738	57%	70,345	63%	26,185	37%	147,771	68%	46,723	32%
Multan	825,548	29%	584,695	71%	1,757,032	42%	1,024,972	58%	193,620	45%	107,498	55%	141,261	51%	204,420	49%
Sheikhupura	899,511	29%	639,280	71%	1,893,236	41%	1,122,309	59%	209,237	52%	99,922	48%	435,474	57%	186,904	43%
Sahiwal	525,584	29%	375,598	71%	1,087,758	41%	639,863	59%	110,240	50%	55,158	50%	432,394	57%	100,778	43%
Sargodha	761,103	28%	546,893	72%	1,562,116	43%	893,353	57%	163,951	54%	76,030	46%	343,860	62%	130,135	38%
Attock	393,069	27%	288,411	73%	771,043	45%	426,784	55%	80,097	58%	33,410	42%	164,815	71%	47,995	29%
Hafizabad	234,359	24%	177,688	76%	489,718	37%	307,560	63%	49,470	50%	24,756	50%	103,932	57%	44,239	43%
Khanewal	566,624	21%	445,403	79%	1,178,028	37%	739,689	63%	127,521	42%	74,431	58%	268,221	52%	128,883	48%
Okara	610,728	21%	480,452	79%	1,289,372	35%	836,600	65%	130,510	42%	75,559	58%	278,711	50%	139,069	50%
Bahawalpur	636,905	21%	502,452	79%	1,353,146	33%	901,908	67%	148,032	36%	94,497	64%	316,754	42%	162,979	58%
Bahawalnagr	568,592	21%	343,431	60%	1,179,478	33%	569,023	48%	124,922	38%	51,068	41%	263,256	46%	89,289	34%
Layyah	292,547	20%	234,774	80%	604,036	36%	387,632	64%	74,128	38%	46,153	62%	154,709	50%	77,665	50%
Kasur	620,380	20%	498,118	80%	1,317,566	34%	875,298	66%	152,680	39%	93,764	61%	319,345	47%	168,895	53%
Vehari	571,635	20%	498,312	87%	1,186,036	34%	885,971	75%	130,294	39%	94,447	72%	273,810	48%	172,243	63%
Rahimyar Khan	816,407	19%	663,621	81%	1,694,541	31%	1,170,401	69%	182,196	36%	117,083	64%	395,438	42%	228,015	58%
Jhang	794,047	18%	650,438	82%	1,651,535	34%	1,085,460	66%	166,378	37%	104,124	63%	353,896	50%	175,611	50%

District	Female				Total				Female				Total			
	Population 15+	Literacy Rates	Illiterate 15+	Illiteracy Rate	Population 15+	Literacy Rate	Illiterate 15+	Illiteracy Rate	Population 10-14	Literacy Rate	Illiterate 10-14	Illiteracy Rate	Population 10-14	Literacy Rates	Illiterate 10-14	Illiteracy Rate
Pak Pattan	354,711	18%	290,671	82%	736,757	32%	502,471	68%	76,699	36%	48,727	64%	164,134	48%	85,838	52%
Khushab	275,574	18%	227,067	82%	536,650	37%	340,707	63%	54,543	43%	31,187	57%	113,239	59%	46,008	41%
Mianwali	303,400	18%	250,009	82%	595,581	39%	365,175	61%	67,496	42%	39,034	58%	140,533	60%	56,154	40%
D.G.Khan	403,154	16%	340,179	84%	836,765	29%	596,503	71%	101,728	28%	73,589	72%	220,929	38%	137,410	62%
Bhakkar	282,408	14%	242,766	86%	582,764	31%	403,268	69%	67,853	32%	46,009	68%	141,865	47%	75,076	53%
Lodhran	303,910	13%	263,941	87%	632,890	28%	456,958	72%	73,151	28%	52,943	72%	155,467	38%	95,686	62%
Muzaffargarh	352,556	12%	571,209	88%	1,360,317	27%	994,168	73%	162,563	24%	123,682	76%	353,719	34%	232,158	66%
Rajanpur	271,200	10%	245,273	90%	570,741	19%	460,327	81%	59,668	19%	48,045	81%	135,115	27%	99,183	73%
PUNJAB	20,425,50	27%	13,977,69	72%	42,317,644	41%	23,650,84	59%	4,566,630	50%	2,160,430	50%	9,597,332	57%	3,949,06	42%

Source: Population Census Organization

Table P.4.3 District Ranking by Literacy Rate (10+ years) and Illiterate Population Punjab (1998)

District Name	Literacy Rate (%)	Illiterate Population (in number)	Rank Order
Islamabad	72.38	166,708	1
Rawalpindi	70.45	740,625	2
Lahore	64.66	1,650,853	3
Jhelum	63.92	247,880	4
Gujrat	62.18	562,450	5
Sialkot	58.92	799,630	6
Chakwal	56.72	346,276	7
Gujranwala	56.55	1,049,510	8
Narowal	52.65	416,642	9.
Faisalabad	51.94	1,880,742	10
Toba Tek Singh	50.50	575,767	11
Attock	49.27	474,779	12
Mandi Bahauddin	47.44	438,461	13
Sargodha	46.30	1,023,488	14
Sahiwal	43.90	740,641	15
Sheikhupura	43.78	1,309,213	16
Multan	43.38	1,229,392	17
Mianwali	42.76	421,329	18
Hafizabad	40.74	351,799	19
Khushab	40.50	386,715	20
Khanewal	39.94	868,572	21
Layyah	38.68	440,045	22
Okara	37.79	975,309	23
Jhang	37.12	1,261,071	24
Vehari	36.79	922,771	25
Kasur	36.21	1,044,193	26
Bahawalnagar	35.07	936,819	27
Pakpattan	34.70	588,309	28
Bhakkar	34.17	477,011	29
Rahim Yar Khan	33.09	1,398,416	30

District Name	Literacy Rate (%) 10+	Illiterate Population 10+ (in number)	Rank Order
Lodhran	29.90	552,644	32
D.G.Khan	30.61	733,913	31
Muzaffargarh	28.45	1,226,326	33
Rajanpur	20.73	559,510	34

Source: EFA Wing; Islamabad.

Table P.5 District Wise Statistics on Social Indicators Punjab

Area	CENSUS POPULATION			Pop. Density per sq K.M	BROAD AGE GROUPS (% DISTRIBUTION)			% of Pop age 60 and over	Total Fertility Rate	% Urban Pop.	% Literate in Pop. age 10 & over			Persons per house hold	Population Estimated for the year (in thousand)			
	Both Sexes	Male	Female		< 15	15-64	65 and over				Both Sexes	Male	Fem		2001	2004	2011	2021
PUNJAB	73621290	38094367	35526923	358.5	42.5	53.5	4.0	6.2	4.7	31.3	46.6	57.2	35.1	6.9	79125	83559	93469	107985
Attock	1274935	636338	638597	186.0	39.5	56.0	4.4	6.9	4.1	21.3	49.3	67.0	32.0	6.1	1370	1447	1619	1870
Bahawalnagar	2061447	1067411	994036	232.2	42.7	53.0	4.0	6.2	4.8	19.1	35.1	45.5	23.8	6.7	2216	2340	2617	3024
Bahawalpur	2433091	1278775	1154316	98.0	44.3	52.3	3.2	5.1	5.0	27.3	34.7	44.5	23.6	6.8	2615	2761	3089	3568
Bhakkar	1051456	543661	507796	129.0	44.5	51.5	3.8	5.8	4.7	16.0	34.2	49.7	17.6	6.6	1130	1193	1335	15742
Chakwal	1083725	518249	565476	166.1	39.0	55.0	6.0	8.9	3.9	12.2	56.7	73.4	41.2	5.7	1165	1230	1376	1590
Dera Ghazi Khan	1643118	518249	565476	137.8	49.0	47.6	3.3	6.2	5.5	13.9	30.6	42.1	18.1	7.8	1766	1865	2086	2410
Faisalabad	5429547	2826908	2602639	927.2	40.8	55.0	4.2	6.5	4.4	42.7	52.0	61.0	42.2	7.2	5835	6162	6893	7963
Gujranwala	3400760	1770255	1630685	939.0	42.5	53.5	4.0	6.1	4.9	50.5	56.3	63.6	48.5	7.5	3655	3860	4317	4988
Gujrat	2048008	1026256	1021752	641.6	40.5	54.3	5.1	7.7	4.0	27.7	62.2	73.0	51.6	6.6	2201	2325	2601	3005
Hafizabad	832980	433320	399660	351.9	12.2	53.5	5.2	7.7	4.9	18.8	50.5	62.3	39.1	7.1	895	945	1058	1222
Jhang	2834545	1474099	1360446	321.8	41.7	54.0	4.5	6.8	4.4	23.4	37.1	51.5	21.4	6.5	3046	3217	3599	4157
Jhelum	936957	468112	468845	261.2	39.7	55.4	4.8	7.5	3.8	27.7	68.9	77.7	50.5	6.1	1007	1064	1190	1375
Kasur	2376875	1243818	113207	594.7	44.5	51.3	4.2	6.3	5.0	22.8	36.2	47.6	23.4	7.0	2553	2696	3016	3485
Khanewal	2068490	1072492	995998	475.6	43.0	53.0	4.0	6.1	5.0	17.6	40.0	53.6	25.1	7.0	2223	2348	2626	3034
Khushab	905711	451439	454272	139.1	46.7	54.4	4.7	7.1	4.3	25.3	40.5	59.8	21.8	6.2	974	1028	1150	1329
Lahore	6318745	3328502	2990243	3565.9	39.2	57.5	3.2	5.2	4.4	82.4	64.6	69.0	59.6	7.1	6791	7171	8022	6267
Layyah	1120951	579009	541942	178.2	46.1	50.2	3.6	5.6	5.8	13.0	38.7	53.0	23.4	7.3	1205	1272	1423	1644
Lodhran	1171800	609202	562598	421.8	46.0	50.5	3.4	5.3	5.1	14.5	29.6	42.7	16.0	7.2	1259	1330	1488	1719
Mandi Bahauddin	1160552	594127	566425	434.2	40.8	54.0	5.2	7.8	4.2	15.2	47.2	58.8	35.6	6.7	1247	1317	1473	1702
Mianwali	1056620	530311	526309	180.9	43.6	52.3	4.1	6.2	4.7	20.8	42.8	63.8	22.1	7.1	1136	1199	1342	1550
Multan	3116851	1635768	1481083	837.9	43.6	53.2	3.1	5.0	5.0	42.2	43.4	53.3	32.3	7.1	3350	3537	3957	4571
Muzaffargarh	2635903	1373036	1262867	319.5	48.4	48.5	3.2	5.1	5.5	12.9	28.4	41.0	14.8	7.3	2833	2992	3346	3866
Narowal	1265097	636217	628880	341.3	44.3	51.0	4.8	7.2	4.7	12.2	52.7	65.6	39.8	7.4	1360	1436	1606	1856
Okara	2232992	1167481	1065511	510.2	42.3	53.4	4.2	4.4	4.6	23.0	37.8	49.2	25.0	6.5	2400	2534	2835	3275
Pakpattan	1286680	668164	618516	472.3	42.7	53.1	4.2	6.4	4.7	14.2	34.7	47.0	21.3	6.4	1383	1460	1634	1887

Rahim Yar Khan	3141053	1636864	1504189	264.4	46.1	50.7	3.2	5.1	5.0	19.6	33.1	43.4	21.8	7.5	3376	3565	3988	4607
Rajanpur	1103618	580822	522796	89.6	48.3	48.4	3.3	5.3	5.7	14.5	20.7	29.2	11.3	7.3	1186	1253	1401	1619
Rawalpindi	3363911	1722477	1641434	636.5	38.6	57.8	3.6	5.8	4.0	53.2	70.4	81.2	59.2	6.4	3615	3818	4271	4934
Sahiwal	1843194	953561	889633	575.8	41.0	54.5	4.4	6.8	4.6	16.4	44.0	54.7	32.3	6.9	1981	2092	2340	2704
Sargodha	2665979	1372883	1293096	455.4	41.4	54.2	4.3	6.7	4.3	28.1	46.3	59.2	32.7	6.4	2865	3026	3385	3910
Sheikhupura	3321029	1729082	1581947	557.2	43.0	52.5	4.4	6.6	5.0	26.2	43.8	53.3	33.3	7.3	3569	3769	4216	4871
Sialkot	2723481	1396523	1326949	903.0	41.6	54.0	4.4	6.7	4.7	26.2	59.0	65.9	51.5	7.3	2927	3091	2458	3995
Toba Tek Singh	1621593	1083812	106604	498.6	41.3	54.0	4.9	7.3	4.6	18.8	50.5	61.3	39.1	7.1	1743	1841	2059	2379
Vehari	2090416	831602	789991	479.0	43.2	52.6	4.0	6.2	4.8	16.0	36.8	49.4	23.2	6.9	2247	2373	2654	3066

Source: National Institute of Population Studies, Islamabad.

**Table P.6.1 Population Projections by Gender and Age Group
(1998-2015)
Punjab (Total)**

Year	00-04			05-09			10-14			15-24			25-34			35-49			50+			Total		
	Total	Male	Female	Total	Male	Female	Total	Male	Female	Total	Male	Female	Total	Male	Female	Total	Male	Female	Total	Male	Female	Total	Male	Female
1998	11215	5777	5438	9667	1993	4674	9662	5076	4587	15694	7095	7698	10276	5218	5057	9167	4759	4409	8510	4498	4012	74191	38315	35875
1999	11211	6779	5432	9808	5055	4783	2743	5419	4624	16204	8260	7925	10741	5451	5289	9502	4924	4573	8673	4572	4101	75882	39180	36702
2000	11167	5759	5408	9936	5114	4822	9820	5158	4662	16682	8547	8135	11217	5692	5526	9862	5102	4760	8848	4653	4196	17532	40025	37507
2001	11036	5693	5343	10100	5196	4904	9865	5172	4693	17134	8505	8329	11712	5944	5768	10247	5292	4956	9029	4737	4292	79123	40839	38285
2002	10769	5556	5213	10349	5330	5019	9853	5143	4710	17568	9061	8507	12236	6212	6023	10660	5493	5166	9210	4820	4389	80644	41615	39027
2003	10439	5385	5054	10610	5474	5136	9823	5099	4724	17973	9304	8068	12772	6489	6283	11097	5707	5390	9400	4909	4491	82114	42367	39746
2004	10118	5218	4899	10809	5586	5223	9815	5069	4746	18338	9523	8814	13313	6770	6544	11558	5983	5626	9607	5006	4601	83558	43105	40453
2005	9876	5093	4783	10874	5625	5249	9870	5082	4788	18653	9707	8946	13846	7048	6798	12042	6170	5872	9840	5117	4723	85001	43842	41159
2006	9715	5010	4705	10758	5566	5192	10036	5165	4871	18899	9845	9055	14380	7328	7052	12544	6416	6128	10098	5242	4857	86430	44572	41860
2007	9588	4944	4644	10509	5437	5072	10286	5300	4987	19084	9944	9140	14924	7614	7310	13065	6671	6394	10376	5377	5000	87832	45287	42547
2008	9492	4894	4598	10198	5275	4923	10548	5444	5104	19235	10021	9214	15462	7899	7563	13612	6939	6672	10675	5523	5152	89222	45995	43226
2009	9426	4860	4566	9894	5116	4778	10748	5556	5192	19381	10091	9290	15980	8177	7803	14190	7225	6965	10995	5679	5316	90614	46704	43910
2010	9388	4840	4548	9668	4998	4670	10815	5596	5219	19551	10172	9379	16463	8442	8021	14807	7532	7275	11337	5846	5491	92029	47426	44603
2011	9393	4842	4551	9520	4921	4599	10701	5538	5163	19767	10271	9495	16918	8701	8217	15473	7866	7608	11696	6021	5675	93468	48160	45308
2012	9442	4867	4575	9404	4860	4544	10456	5411	5045	20009	10379	9630	17355	8958	8397	16185	8223	7962	12072	6204	5868	94923	48920	46021
2013	9513	4903	4610	9318	4815	4504	10148	5250	4898	20245	10481	9764	17763	9202	8561	16925	8596	8328	12472	6399	6073	96384	49646	46738
2014	9583	4938	4645	9261	4784	4477	9847	5093	4755	20442	10566	9876	18132	6423	8710	17676	8978	8698	12904	6610	6294	97845	50392	47455
2015	9630	4962	4668	9232	4768	4464	9624	4976	4648	20567	10620	9947	18452	9608	8844	18423	9361	9062	13375	6839	6536	99303	51134	48169

Source:- National Institute of Population Studies (NIPS) Islamabad.

**Table P.6.2 Population Projections by Gender and Age Group
(1998-2015)
Punjab (Urban)**

Year	00-04			05-09			10-14			15-24			25-34			35-49			50+			Total		
	Total	Male	Female	Total	Male	Female	Total	Male	Female	Total	Male	Female	Total	Male	Female	Total	Male	Female	Total	Male	Female	Total	Male	Female
1998	3293	1707	1586	2775	1406	1369	2840	1504	1337	4345	2280	2065	3426	1795	1631	3582	1902	1679	2877	1520	1357	23138	12114	11024
1999	3226	1725	1601	2852	1443	1400	2894	1532	1362	4539	2389	2151	3619	1895	1724	3747	1986	1700	2948	1555	1393	23925	12525	11400
2000	3348	1737	1611	2926	1478	1448	2949	1560	1339	4729	2495	2234	3921	2000	1821	3927	2078	1849	3027	1594	1433	24727	12942	11785
2001	3344	1735	1609	3012	1521	1491	2996	1581	1414	4916	2601	2315	4034	2111	1923	4121	2176	1945	3111	1636	1476	25534	13361	12173
2002	3300	1712	1588	3125	1580	1545	3026	1590	1436	5102	2709	2393	4260	2230	2030	4327	2280	2047	3199	1679	1520	26339	13780	12559
2003	3238	1680	1558	3243	1642	1601	3053	1595	1458	5285	2816	2469	4496	2354	2142	4548	2391	2156	3293	1726	1567	27156	14204	12951
2004	3179	1649	1531	3344	1696	1648	3089	1606	1483	5462	2919	2544	4741	2484	2257	4785	2511	2274	3398	1778	1620	27998	14643	13357
2005	3146	1631	1515	3404	1728	1676	3149	1632	1517	5631	3014	2617	4992	2617	2375	5040	2639	2401	3517	1836	1681	28879	15097	43782
2006	3138	1626	1511	3410	1731	1679	3249	1683	1566	5785	3099	2686	5253	2755	2495	5310	2774	2535	3648	1899	1749	29793	15567	14223
2007	3139	1627	1513	3377	1714	1662	3380	1752	1627	5926	3174	2751	5524	2900	2625	5593	2916	2677	3790	1967	1823	30729	16050	14678
2008	3152	1663	1519	3325	1688	1638	3517	1826	1691	6063	3247	2816	5803	3048	2755	5895	3067	2827	3944	2041	1903	31699	16550	15149
2009	3178	1646	1532	3278	1663	1615	3635	1890	1745	6205	3320	2885	6082	3198	2884	6221	3232	2989	4113	2122	1990	32712	17071	15640
2010	3216	1665	1551	3257	1652	1605	3710	1930	1780	6263	3401	2962	6359	3349	3010	6579	3413	2166	4300	2214	2086	33784	17624	16160
2011	3278	1694	1579	3261	1654	1607	3726	1938	1788	6543	3491	3052	6636	3503	3133	6970	3612	3358	4501	2314	2187	34909	18206	16704
2012	3346	1731	1615	3275	1661	1614	3700	1924	1776	6739	3587	3152	6917	3663	3254	7391	3826	3565	4715	2421	2294	36083	18813	17270
2013	3430	1774	1656	3302	1674	1627	3655	1900	1755	6941	3686	3255	7196	3822	3374	7838	4054	3783	4947	2538	2410	37309	19448	17860
2014	3516	1818	1698	3341	1694	1647	3614	1877	1736	7136	3782	3443	6748	3977	3492	8305	4294	4011	5203	2665	2537	38583	20107	18475
2015	3598	1860	1738	3394	1721	1673	3601	1870	1731	7314	3871	3443	7730	4211	3608	8790	4545	4245	5487	2807	2680	39914	20796	19118

Source:- National Institute of Population Studies (NIPS) Islamabad.

**Table P.6.3 Population Projections by Gender and Age Group
(1998-2015)
Punjab (Rural)**

Year	Total	00-04		05-09		10-14		15-24		25-34		35-49		50+		Total								
		Male	Female	Male	Female	Male	Female	Male	Female	Male	Female	Male	Female	Male	Female	Male	Female							
1998	7922	4070	3852	6892	3587	3205	6822	3571	3250	11349	5715	6633	6850	3423	3423	5585	2857	2730	5633	2978	2655	51053	26201	24651
1999	7685	7054	3831	6956	3612	3344	6849	3587	3262	14665	53891	5774	7122	3556	3565	9555	2938	2018	5725	3017	2708	51957	26655	25302
2000	7819	4022	3797	7010	3636	3374	6871	3598	3273	11953	6052	5901	7396	3692	3704	5935	3024	2911	5821	3059	2762	52805	27083	25722
2001	7692	3958	3734	7088	3675	7413	6869	3591	3279	12218	6204	6014	7678	3833	3845	6126	3116	3011	5918	3101	2816	53589	27478	26112
2002	7469	3844	3625	7224	3750	3474	6827	3553	3274	12466	6352	6114	7975	3982	3993	6333	3213	3119	6011	3141	2869	54305	27835	26468
2003	7201	3705	3496	7367	3832	3535	6770	3504	3266	12688	6488	6199	8276	4135	4141	6549	3316	3234	6107	3183	2924	54958	28163	26795
2004	6939	3569	3368	7465	3890	3575	6726	3463	3263	12876	6604	6270	8572	4286	4287	6773	3422	3352	6209	3228	2081	55560	28462	27096
2005	6730	3462	3268	7470	3897	3573	6721	3450	3271	13022	6693	6329	8854	4431	4423	7002	3531	3471	6323	3281	3042	56122	28745	27377
2006	6577	3384	3194	7348	3835	3513	6787	3482	3305	13114	6745	6369	9127	4573	4555	8234	3642	3593	6450	3343	3108	56637	29005	27637
2007	6449	3317	3131	7132	3723	3410	6906	3548	3360	13158	6770	6389	9400	4714	4685	7472	3755	3717	6586	3410	3177	57103	29237	27869
2008	6340	3261	3079	6873	3587	3285	7031	3618	3413	13172	6774	6398	9659	4851	4808	7717	3872	3845	6731	3482	3249	57523	29445	28077
2009	6248	3214	3034	6616	3453	3163	7113	3666	3447	13176	6771	6405	9898	4979	4919	7969	3993	3976	6882	3557	3326	57902	29633	28270
2010	6172	3175	2997	6411	3346	3085	7105	3666	3439	13188	6771	6417	10104	5093	5011	8228	4119	4109	7037	3632	3405	58245	29802	28443
2011	6121	3148	2972	6259	3267	2992	6975	3600	3375	13224	6780	6443	10282	5198	5084	8503	4254	4250	7195	3707	3488	58559	29954	28604
2012	6096	3136	2960	6129	3199	2930	6756	3487	3269	13270	6792	6478	10438	5295	5143	8794	4397	4397	7357	3783	3574	58840	30089	28751
2013	6083	3129	2954	6016	3141	2877	6493	3350	3143	13304	6795	6509	10567	5380	5187	9087	4542	4545	7525	3861	3663	59075	30198	28878
2014	6067	3120	2947	5920	3090	2830	6233	3216	3019	13306	6784	6522	10664	5446	5218	9371	4684	4687	7701	3945	3757	59262	30285	28980
2015	6032	3102	2930	5838	3047	2791	6023	3106	2917	13253	6749	6504	10722	5486	5236	9633	4816	4817	7888	4032	3856	59389	30338	29051

Source:-National Institute of Population Studies (NIPS) Islamabad.