

# *Sindh*

## *Demographic Profile*

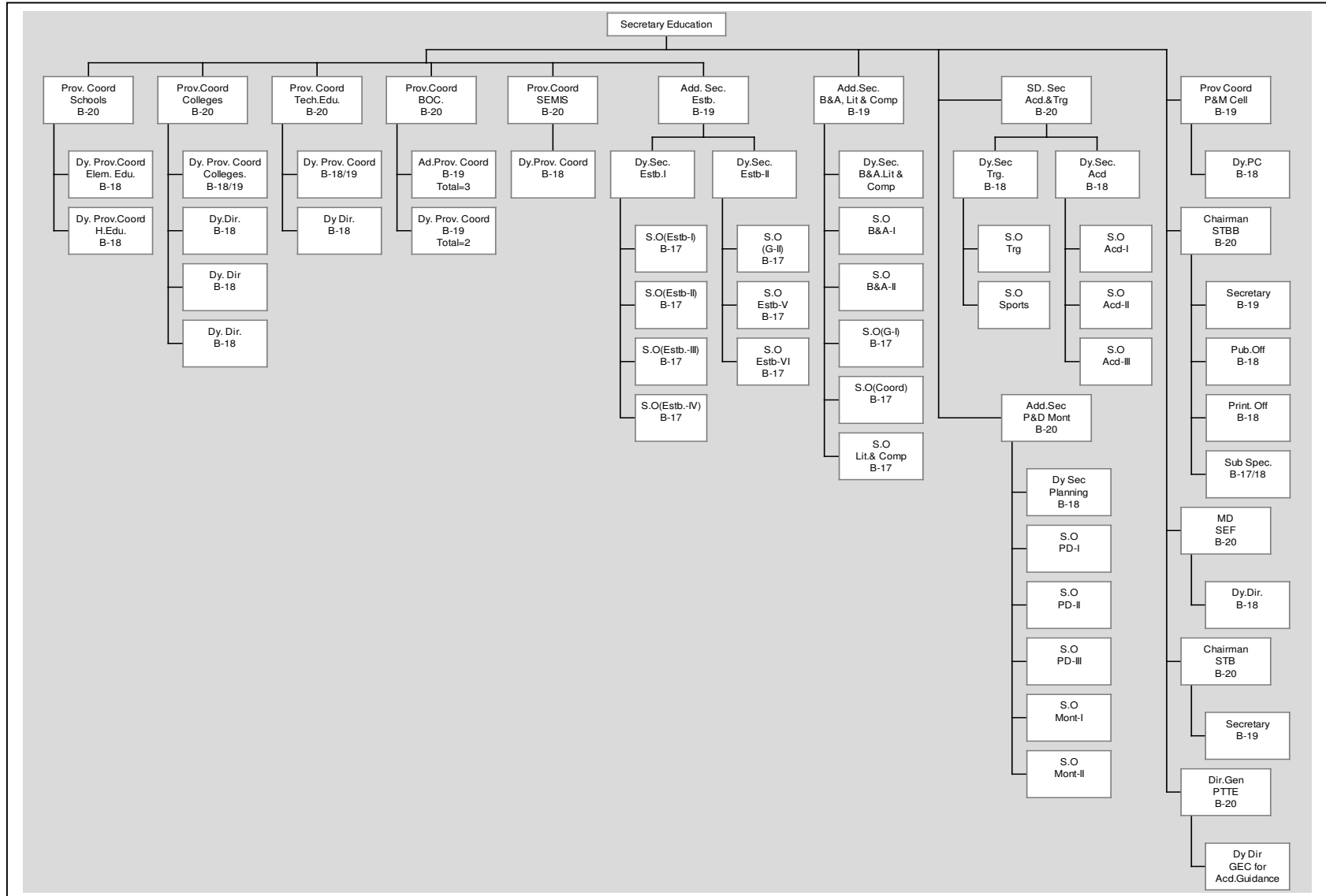
In 2001, Sindh had an estimated total population of 32,867,000 (23% of the total population of the country), residing in 21 districts. In terms of population, with an average population density of 216 persons per square kilometer, Sindh has 48.8% of its population living in urban areas. The average household size is 6 persons per household.

## *Administrative Structure of the Education Department*

The following are some significant revisions in rules to ensure better quality of education within the province:

- ❖ All BPS-11 and above recruitment will be made through the Public Service Commission
- ❖ All government primary schools will be genderless
- ❖ Preference will be given to the local female teachers for appointment in the primary schools
- ❖ The teachers will be recruited through a two-year contract, which will be renewed only in case of satisfactory performance
- ❖ All appointments of teachers will be school specific. There won't be any transfers in order to ensure continuity
- ❖ Financial powers will be shifted from defunct to current positions according to their successive positions
- ❖ Existing strength of Education Engineering Works has been merged with the Communication & Works Department.

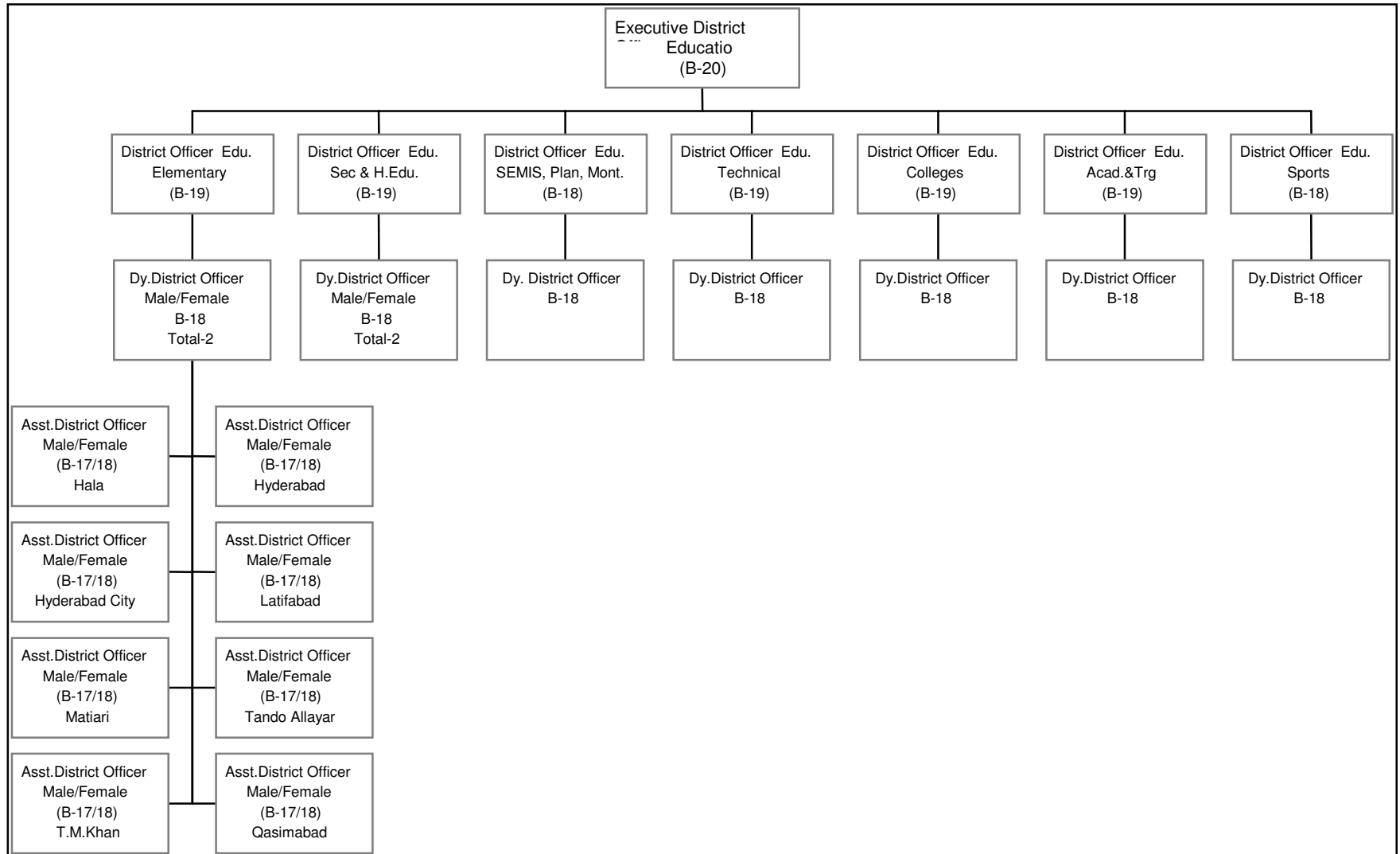
## *Organogram of Provincial Education Structure in Sindh*



***The following specific functions have been devolved to the district level:***

- ❖ District level planning, research & development and mapping of schools within the framework of provincial and national guidelines/policies/targets
- ❖ Promotion of community participation for education development
- ❖ Development and maintenance of uniform standards of education and quality improvement
- ❖ Planning, implementation and monitoring of development projects at district level
- ❖ Development of functional SEMIS/GIS
- ❖ Preparation of budget, its distribution, utilization and audit, (Financial Management)
- ❖ Organizing and promoting academic associated projects and sports including Boy Scouts and Girls Guides, Youth Corps of Volunteers
- ❖ Provision and maintenance of sports facilities
- ❖ Registration and supervision of private schools
- ❖ Monitoring and supervision of all educational institutions
- ❖ Recommendations for award of scholarships to students
- ❖ Selection of teachers for training, retaining and recommending them for admission in GCETs on need/regular basis
- ❖ Posting/transfers of teaching and ministerial staff within the district
- ❖ Award of selection grade, move-over, pension and promotion of teaching and ministerial staff of the district cadres
- ❖ Establishment, up-gradation, maintenance, and repair of educational institutions and provision of basic facilities to educational institutions.
- ❖ Procurement of furniture, equipment, and other material for the educational institutes and offices.
- ❖ Award of certificates of merit and other district instituted awards to commend good performance, achievement of excellence, work beyond duty, leadership and model qualities and expression, production of children's literature and allied matters to encourage high aspiration levels.

## *District Education Department, District Hyderabad*



## ***District Population***

In Sindh, Karachi, the provincial metropolis, is the largest city of the province with a total population<sup>1</sup> of 8181,000 persons; Umerkot, with 716,000 persons, is the district with the least population in Sindh. Sindh has several major districts with high levels of population. These include Karachi, Hyderabad, Larkana, Khairpur and Sukkur. In the context of education, districts with very high primary-school aged population are Karachi (1.2 million), Hyderabad (0.43 million) and Larkana (0.34 million); these districts also have high levels of middle and high school aged population (Table S.1).

## ***Schools, Enrolment and Teachers***

Sindh has a total of 5,844 schools of all types i.e., boys, girls and mixed (Table S.2). Every district has more boys' schools than girls' schools. Karachi and Hyderabad have around 1,000 boys' schools and over 700 girls' schools. Khairpur, Thatta, Sanghar and Larkana have the highest number of boys' schools (over 1400 schools) but girls' schools are not more than 600 (in Thatta and Sanghar, there are only 300-400 girls' schools). Karachi, Hyderabad, Khairpur, Sanghar and Larkana also have very high students' enrolment as well as the highest number of primary school teachers.

## ***School Participation***

Although Sindh has a large number of schools, but primary participation rates are generally low (Table S.3). Except for Karachi, where participation rates range between 68.92% and 53.57% for its districts, no other district has a participation rate above 40%. The districts with relatively low participation rates are Tharparkar (12.98%); Thatta (16.29%); Shikarpur (18.2%); and Badin (18.35%).

## ***Literacy Rates and Ranking***

Literacy rates in Sindh districts range between 76% (Karachi Central) and 18.32% (Tharparkar). Districts with literacy rates between 40%-50% include Hyderabad and Sukkur (Table S.4.1). Districts of very low literacy rates (below 30%) include Ghotki; Umerkot; Badin; Jacobabad; Thatta and Tharparkar.

---

<sup>1</sup> Administratively, the city is divided into five districts.

Female literacy rates (15+) are high (over 60%) in only three Sindh districts i.e., Karachi Central; Karachi East; and Karachi South. For females (10-14 years), literacy rates are better, with all five Karachi districts achieving a literacy rate of over 60% (Table S.4.2).

In Sindh, ranking of district displays a wide range. Planners should, however, focus more on the lower-ranked districts of Ghotki, Umerkot; Badin; Jacobabad; Thatta and Tharparkar (Table S.4.3).

### ***Other Social Indicators***

Of its total population, Sindh has an average of 42.8% in the age group of <15 years (Table S.5). Almost one-half (11) districts have a high ratio of young population i.e., with over 45% of population aged below 15 years. Three districts i.e., Karachi Central; Karachi East and Karachi South, have 100% urban population while Karachi West has 91% of urban population. Hyderabad, Sukkur and Karachi Malir have 50%-60% urban population but the remaining districts are less urbanized. Household size is, generally, very high ranging between 8 persons per household (Shikarpur) to 5.1 persons per household (Thatta).

### ***Population Projections (1998-2015)***

To facilitate the planning of the various sectors of the economy, the National Institute for Population Studies (NIPS), Islamabad has generated 15-year population projections for each province, separately for urban and rural population (Tables S.6.1-S.6.3).

**Table S.1 District Population Sindh (1998)**

District	Population (5-9 years)		Population (10-14)		Population (15+)	
	Total	Total	Female	Total	Female	
Jacobabad	253851	157876	63875	765820	378009	
Shikarpur	152483	101316	43316	476604	236197	
Larkana	335866	224628	98290	1028024	509118	
Khairpur	266382	186427	81585	827543	399032	
Sukkur	144862	110972	49960	508370	235997	
Ghotki	170176	116879	51842	517124	245961	
Nawabshah	177431	130870	57885	588845	288882	
Naushahro Feroze	184084	131681	57125	591342	288399	
Badin	193106	135191	60860	624741	296985	
Thatta	187145	128153	55882	625109	296710	
Sanghar	242843	182786	81186	793992	380040	
Mir Pur Khas	148380	117090	54152	497558	239875	
Tharparker	166319	126844	55467	454551	216248	
Umer Kot	114391	85399	38219	352285	168030	
Karachi (East)	342980	343369	165998	1737431	791784	
Karachi (West)	298909	278821	133693	1241411	537530	
Karachi (South)	209556	209803	101207	1131348	503144	
Karachi (Central)	274155	277528	133890	1463632	680779	
Malir	144447	125463	58671	575350	238637	
Dadu	274912	197469	84711	950389	457730	
Hydereabad	438506	362407	797754	1672202	168177	

Source: Population Census Organization ,District Census Reports (DCRs)

Note: Roughly 52% of 5-9 age group Population is male and 48% Female.

**Table S.2 Number of Schools, Enrolment and Teachers in Public Sector Schools  
Sindh Districts 1999-2000**

District	Number of Schools				Enrolment			Teachers		
	Male	Female	Mixed	Total	Male	Female	Total	Male	Female	Total
Badin	738	379	1698	2815	82361	31916	114277	4710	1004	5714
Dadu	663	511	1697	2871	138207	65227	203434	7970	2022	9992
Hyderabad	981	718	1891	3590	191238	131217	322455	10297	5739	16036
Thatta	1400	343	975	2700	76477	30000	106477	5100	1126	6226
Karachi Central	168	170	228	566	67658	92955	160613	1984	5879	7863
Karachi East	250	229	139	618	71228	101107	172335	2289	6195	8484
Karachi South	188	140	181	509	32008	61131	93139	2025	3743	5768
Karachi West	236	99	301	636	49860	52152	102012	1911	1881	3792
Malir	168	154	357	679	35347	27055	62402	1725	867	2592
Jacobabad	1346	469	1015	2830	122059	40611	162670	6295	1044	7339
Larkana	1408	572	924	2904	173029	91308	264337	7664	2364	10028
Shikarpur	714	265	376	1355	65645	28564	94209	3731	903	4634
Khairpur Mirs	1550	578	1262	3390	176107	71922	248029	8462	1962	10424
N.Feroze	964	344	862	2170	118344	59567	177911	5835	1670	7505
Nawab Shah	993	311	824	2128	101897	45693	147590	4078	1277	5355
Sukkur	501	224	428	1153	74596	38406	113002	4129	1701	5830
Ghotki	901	183	394	1478	91864	22372	114236	3643	463	4106
Mirpur Khas	646	331	750	1727	66355	363338	102693	3589	1630	5219
Mithi	2529	324	464	3317	55862	22457	78319	4123	481	4604
Sanghar	1405	393	1969	3267	131374	50800	182174	8458	1907	10365
Umerkot	1064	295	474	1833	47922	19016	66938	2948	625	3573
<b>Total</b>	<b>5844</b>	<b>1343</b>	<b>3157</b>	<b>10144</b>	<b>301513</b>	<b>128611</b>	<b>430124</b>	<b>19118</b>	<b>4643</b>	<b>23761</b>

Source: Sindh Education Management Information System (SEMIS)

**Table S.3 Participation of School-going Children (5-9 years)  
Sindh (1998)**

<b>District</b>	<b>Population (5-9)</b>	<b>School Going Upto Primary Level</b>	<b>Participation Rate 1998 (%)</b>	<b>District</b>	<b>Population (5-9)</b>	<b>School Going Upto Primary Level</b>	<b>Participation Rate 1998 (%)</b>
Jacobabad	253851	55315	21.79	Mirpurkhas	148380	42596	28.71
Shikarpur	152483	27753	18.2	Tharparkar	166329	21589	12.98
Larkana	335866	95669	28.48	Umerkot	114391	26665	23.31
Khairpur	266382	89299	33.52	Karachi East	342780	212576	62.02
Sukkur	144862	52397	36.17	Karachi West	298909	160139	53.57
Ghotki	170176	41587	24.44	Karachi South	209556	135178	64.51
Nawabshah	177431	53063	29.91	Karachi Central	274155	188934	68.92
Naushahro Feroze	184084	70633	38.37	Malir	144447	51125	68.92
Dadu	274912	88576	32.22	Hyderabad	438506	157471	35.91
Badin	193106	35427	18.35	Thatta	187145	30489	16.29
Sanghar	242843	73582	30.3				

Source:- Population Census Organization  
UNESCO Islamabad.

**Table S.4.1 Literacy Rate (10 Years & above) by Gender and Location  
Sindh Districts 1998 and 2001**

Sindh	Years	All Areas			Urban			Rural		
		Both Sexes	Male	Female	Both Sexes	Male	Female	Both Sexes	Male	Female
	1998	45.29	54.50	34.78	63.72	69.75	56.66	25.73	37.89	12.23
	2001	48.29	57.63	37.83	66.32	72.10	59.68	28.11	40.92	14.22
<i>Districts</i>										
Jacobabad	1998	23.66	34.08	12.3	43.86	57.02	29.57	16.86	26.37	6.47
	2001	28.55	39.78	18.47	47.75	90.42	45.20	20.66	31.46	11.48
Shikarpur	1998	31.94	44.95	18.04	55.33	68.34	41.26	33.92	36.88	10.15
	2001	34.17	47.03	21.46	57.63	70.16	47.56	25.40	38.37	12.79
Larkana	1998	34.95	48.56	20.48	51.95	65.16	37.83	27.68	41.44	13.1
	2001	38.54	52.76	24.34	54.40	67.96	44.34	30.99	45.52	17.23
Khairpur	1998	35.5	49.69	19.77	50.68	63.94	36.05	30.61	45.1	14.48
	2001	39.48	53.66	26.00	55.43	68.17	42.87	34.50	49.11	22.50
Sukkur	1998	46.62	59.83	31.22	59.76	70.59	46.9	31.72	47.4	13.78
	2001	52.98	66.12	39.15	67.27	74.30	51.10	35.57	52.16	18.19
Ghotki	1998	29.01	44.21	11.85	49.38	64.63	32.72	24.87	40.14	7.52
	2001	-	-	-	-	-	-	-	-	-
Nawabshah	1998	34.13	47.62	19.62	54.26	64.94	42.69	26.47	41	10.89
	2001	37.04	50.95	22.45	55.95	66.31	45.11	28.56	43.96	12.14
Naushahro Feroze	1998	39.14	54.27	22.6	53.34	66.15	39.57	35.99	51.66	18.8
	2001	-	-	-	-	-	-	-	-	-
Dadu	1998	36.56	48.03	21.65	54.3	66.6	41.11	30.34	42.98	16.08
	2001	39.66	52.08	27.45	57.86	70.32	45.24	33.77	46.48	21.25
Hyderabad	1998	44.25	52.63	34.97	61.3	67.32	54.58	24.48	35.76	12.89
	2001	48.48	56.73	39.70	66.58	72.00	60.88	26.47	38.00	13.87

District	Years	All Areas			Urban			Rural		
		Both Sexes	Male	Female	Both Sexes	Male	Female	Both Sexes	Male	Female
Badin	1998	24.63	35.07	12.9	44.76	56.24	31.33	20.52	30.66	9.23
	2001	27.52	38.84	14.94	46.26	60.27	33.17	23.04	34.72	10.67
Thatta	1998	22.14	31.58	11.4	45.92	56.98	33.9	18.99	28.31	8.34
	2001	23.09	32.65	12.37	48.33	58.41	38.70	19.67	29.23	8.76
Sanghar	1998	30.87	42.88	17.54	53.15	64.65	40.55	23.94	36.18	10.17
	2001	34.18	46.70	20.69	55.93	66.90	44.55	27.38	40.59	13.45
Mirpurkhas	1998	35.97	45.99	25.05	59.8	68.02	50.92	23.13	14.21	10.98
	2001	-	-	-	-	-	-	-	-	-
Tharparkar	1998	18.32	28.33	6.91	57.27	71.14	41.68	16.35	26.17	5.14
	2001	18.70	29.31	6.76	62.32	76.74	44.35	17.43	28.12	5.34
Umerkot	1998	24.83	36.32	11.94	49.5	64.27	31.79	19.51	30.06	7.84
	2001	-	-	-	-	-	-	-	-	-
Karachi East	1998	73.11	75.72	70.05	73.11	75.72	70.05	-	-	-
	2001	-	-	-	-	-	-	-	-	-
Karachi West	1998	56.04	62.14	48.32	57.13	63.22	49.38	45.1	50.98	38.11
	2001	-	-	-	-	-	-	-	-	-
Karachi South	1998	67.59	71.63	62.67	67.59	71.63	62.67	-	-	-
	2001	-	-	-	-	-	-	-	-	-
Karachi Central	1998	46.00	77.83	73.92	76.00	77.83	73.92	-	-	-
	2001	-	-	-	-	-	-	-	-	-
Malir	1998	53.56	61.44	42.87	55.56	62.69	45.43	49.16	58.57	38.05
	2001	-	-	-	-	-	-	-	-	-

Source: Population Census Organization  
UNESCO Islamabad.

**Table S.4.2 Population and Literacy Rates-Sindh Districts (1998)**

District	Female				Total				Female				Total			
	Population 15+	Literacy Rates	Illiterate 15+	Illiteracy Rate	Population 15+	Literacy Rate	Illiterate 15+	Illiteracy Rate	Population 10-14	Literacy Rate	Illiterate 10-14	Illiteracy Rate	Population 10-14	Literacy Rates	Illiterate 10-14	Illiteracy Rate
Karachi Central	680779	73%	143082	21%	1463632	75%	216370	15%	133890	81%	678	1%	277528	80%	3584	1%
Karachi East	791784	68%	254087	32%	1737431	72%	490169	28%	165998	80%	32786	20%	343369	80%	69425	20%
Karachi South	503144	60%	202481	40%	1131348	66%	386985	34%	101207	77%	23130	23%	209803	77%	47658	23%
Karachi West	537530	44%	298421	56%	1241411	54%	573317	46%	133693	64%	48465	36%	278821	66%	95035	34%
Malir	238637	39%	146418	61%	575350	51%	280084	49%	58671	60%	23431	40%	125463	64%	45348	36%
Hyderabad	797754	32%	543736	68%	1672202	42%	967317	58%	168177	50%	84432	50%	362407	54%	167050	46%
Sukkar	235997	28%	170778	72%	508370	45%	281933	55%	49960	48%	25897	52%	110972	56%	48660	44%
Mirpurkhas	239875	22%	187034	78%	497558	34%	328551	66%	54152	38%	33348	62%	117090	45%	64984	55%
Naushahro Feroze	288399	19%	233477	81%	591342	36%	377497	64%	57125	41%	33949	59%	131681	53%	62548	47%
Dadu	457730	19%	371879	81%	950389	34%	631741	66%	84711	37%	53149	63%	197468	45%	107926	55%
Larkana	509118	17%	421650	83%	1028024	32%	698785	68%	98290	38%	61351	62%	224628	48%	116104	52%
Nawabshah	288822	17%	240597	83%	588845	32%	401651	68%	57885	34%	38096	66%	130870	45%	72437	55%
Khairpur	399032	16%	334514	84%	827543	32%	559167	68%	81585	37%	51107	63%	186427	49%	94808	51%
Shikarpur	236197	15%	200009	85%	476604	30%	334356	70%	43316	33%	29083	67%	101316	42%	58998	58%
Sanghar	380040	15%	323826	85%	793992	29%	563990	71%	81186	30%	56895	70%	182786	39%	111236	61%
Badin	296985	11%	264668	89%	624741	23%	480463	77%	60860	23%	47018	77%	135191	32%	92279	68%
Jaccobabad	378009	10%	338628	90%	765820	22%	597147	78%	63875	23%	48884	77%	157876	32%	107965	68%
Thatta	296710	10%	266858	90%	625109	22%	490581	78%	55822	19%	45490	81%	128153	25%	95943	75%
Umerkot	168030	10%	151493	90%	3522285	23%	270665	77%	38219	21%	30140	79%	85399	32%	58347	68%
Ghotki	245961	10%	192623	78%	517124	27%	329959	64%	51842	23%	35482	68%	116879	37%	65940	56%
Tharparkar	216248	6%	203886	94%	454551	18%	374684	82%	55467	12%	49040	88%	126884	21%	100224	79%
SINDH	8186781	26%	5490145	73%	17423671	38%	963412	61%	1695931	41%	851851	57%	3731012	49%	1686499	50%

**Table S.4.3 District Ranking by Literacy Rate (10+ years) and Illiterate Population - Sindh (1998)**

District	Literacy Rate (%) 10+	Illiterate Population 10+ (in number)	Ranking Order
Karachi Central	76.00	417,894	1
Karachi East	73.11	559,594	2
Karachi South	67.59	434,643	3
Karachi West	56.04	668,352	4
Malir	53.56	325,432	5
Sukkur	46.62	330,593	6
Hyderabad	44.25	1,134,367	7
Naushahro Feroze	39.14	440,045	8
Mirpurkhas	35.97	393,535	9
Dadu	35.56	739,667	10
Khairpur	35.50	653,975	11
Larkana	34.95	814,889	12
Nawabshah	34.13	474,088	13
Shikarpur	31.94	393,354	14
Sanghar	30.87	675,226	15
Ghotki	29.01	450,081	16
Umer Kot	24.83	329,012	17
Badin	24.63	572,742	18
Jacobabad	23.66	705,112	19
Thatta	22.14	586,524	20
Tharparkar	18.32	474,908	21

Source: EFA Wing, Ministry of Education

**Table S.5 District Wise Statistics on Social Indicators of Sindh**

Province & District	CENSUS POPULATION FIRST MARCH 1998			Pop. Density per sq K.M	BROAD AGE GROUPS (% DISTRIBUTION)			% of Pop age 60 and over	Total Fertility Rate	% Urban Pop.	% Literate in Pop.age 10 & over			Persons per house hold	Population Estimated for the year (in thousand)			
	Both Sexes	Male	Female		<15	15-64	65 and over				Both Sexes	Male	Fem		2001	2004	2011	2021
SINDH	30439893	16097591	14342302	216.0	42.8	54.5	2.8	4.6	4.7	48.8	45.3	54.5	34.8	6.0	32867	34891	39202	45283
Badin	1136044	597573	558471	168.9	45.0	51.9	3.1	5.1	4.9	16.4	24.6	35.1	12.9	5.3	1227	1302	1463	1690
Dadu	1688811	887061	801750	88.6	43.7	53.4	9.2	4.9	5.2	21.4	35.6	48.0	21.7	5.5	1823	1936	2175	2512
Ghotki	970549	511363	459186	159.6	46.7	50.6	2.7	4.5	5.2	16.3	29.0	44.2	11.9	5.5	1048	1112	1250	1444
Hyderabad	2891488	1511025	1380463	523.9	41.2	55.0	2.9	4.7	4.8	50.8	44.3	52.6	35.0	6.0	3122	3315	3724	4302
Jacobabad	1425572	744014	681558	270.1	46.3	51.3	2.4	4.2	5.2	24.4	23.7	34.1	12.3	5.6	1539	1634	1836	2121
Karachi(Central)	2277931	1200536	1077395	33013.5	35.7	61.2	3.0	5.0	3.9	100.0	76.0	77.8	73.9	6.8	2460	2611	2934	3389
Karachi (East)	2746014	1464360	1281654	19755.5	36.7	60.4	2.8	4.7	4.0	100.0	73.1	75.7	70.1	6.8	2965	3147	3536	4085
Karachi (Malir)	981412	548645	432767	432.7	41.4	56.6	2.0	3.4	4.0	67.3	53.6	61.4	42.9	6.2	1059	1125	1263	1459
Karachi (South)	1745038	943365	801673	14303.6	35.2	62.1	2.8	4.7	3.8	100.0	67.6	71.6	62.7	6.2	1884	2000	2247	2595
Karachi (West)	2105923	1149200	956723	2266.9	41.1	56.9	2.1	3.6	4.0	90.7	56.4	62.1	48.3	6.8	2273	2413	2711	3132
Khairpur	1546587	810448	736139	97.2	46.5	50.7	2.8	4.6	5.3	23.6	35.5	49.7	19.8	6.0	1670	1773	1992	2301
Larkana	1927066	993576	933490	259.6	46.7	50.6	2.7	4.6	5.1	28.9	35.0	48.6	20.5	5.9	2081	2209	2482	2868
Mirpurkhas	905935	471096	434839	309.7	45.1	52.2	2.8	4.6	4.7	33.1	36.0	46.0	25.1	6.1	978	1039	1167	1348
Naushahro Feroze	1087571	568574	518997	369.2	45.6	51.6	2.8	4.6	5.5	17.7	39.1	54.3	22.6	5.8	1174	1247	1401	1618
Nawabshah	1071533	555677	515856	238.0	45.0	52.2	2.8	4.6	5.4	26.4	34.1	47.6	19.6	6.0	1157	1228	1380	1594
Sanghar	1453028	762284	690744	135.4	45.4	61.7	2.9	4.7	4.9	22.8	30.9	42.9	17.5	6.4	1569	1666	1872	2162
Shikarpur	880438	456589	423849	350.5	45.9	51.5	2.7	4.6	5.4	24.1	31.9	45.0	18.0	8.0	951	1009	1134	1310
Sukkur	908373	483251	425122	175.9	44.0	53.4	2.6	4.4	5.0	50.5	46.6	59.8	31.2	6.5	981	1041	1170	1351
Tharparkar	914291	499859	414432	46.6	50.3	46.0	3.7	5.7	4.7	4.4	18.3	28.3	6.9	5.6	987	1048	1177	1360
Thatta	1113194	589341	523853	64.1	43.8	53.2	2.9	4.8	5.2	11.2	22.1	31.6	11.4	5.1	1202	1276	1434	1656
Umerkot	663095	349754	313341	118.2	46.9	50.1	3.0	4.9	4.8	16.8	24.8	36.3	11.9	5.4	716	760	8543	986

**Table S.6.1 Population Projections by Gender and Age Group  
Sindh (1998-2015)**

Year	00-04			05-09			10-14			15-24			25-34			35-49			50+			Total		
	Total	Male	Female	Total	Male	Female	Total	Male	Female	Total	Male	Female	Total	Male	Female	Total	Male	Female	Total	Male	Female	Total	Male	Female
1998	4493	2323	2170	3698	1968	1730	3939	2084	1875	6473	3457	3015	4694	2505	2190	4151	2112	1845	3403	1712	1691	30677	16161	14517
1999	4538	2339	2199	3762	1997	1765	3966	2090	1877	6666	3556	3110	4877	2604	2273	4365	2222	1934	3458	1740	1718	31424	16548	14876
2000	4559	2344	2214	3828	2025	1883	3975	2095	1885	6647	3648	3197	5059	2703	2356	4583	2337	2028	3523	1774	1749	32155	16927	15227
2001	4533	2327	2206	3926	2058	1858	3965	2092	1873	7028	3739	3284	5241	2802	2439	4515	2456	2127	3995	1812	1783	32866	17296	15570
2002	4442	2281	2162	4087	2139	1948	3915	2069	1845	7230	3829	3374	5423	2901	2522	4815	2582	2232	3673	1853	1919	33558	17654	15902
2003	4317	2217	2099	4265	2217	2048	3856	2042	1813	7375	3914	3460	5605	3001	2604	5055	2713	2343	3758	1900	1859	34231	18004	16226
2004	4186	2152	2034	4414	2282	2133	3919	2025	1794	7526	3999	3537	5787	3100	2687	5302	2846	2456	3855	1952	1903	34889	16346	16544
2005	4081	2099	1982	4488	2311	2177	3834	2031	1804	7647	4049	3597	5959	3297	2741	5551	2980	2571	3855	2014	1954	35538	18683	16856
2006	3998	2256	1942	4468	2297	2170	3933	2074	1859	7720	4099	3633	6153	3396	2856	5805	3115	2689	3968	2084	2011	36171	19011	17160
2007	3917	2214	1933	4383	2253	2139	4094	2145	1949	7755	4108	3648	6339	3494	2943	6064	3253	2811	4094	2116	2072	36785	19330	17455
2008	3842	1975	1867	4263	2193	2070	4272	2223	2049	7774	4119	3655	6524	3589	3030	6328	3392	2936	4233	2245	2139	37387	19641	17746
2009	3780	1942	1867	4139	2131	2008	4421	2287	2134	7798	4132	3666	6706	3681	3116	6594	3533	3061	4384	2336	2214	37988	19950	18036
2010	3734	1919	1816	4039	2080	1969	4495	2317	2178	7850	4156	3694	6881	3771	3201	6861	3676	3185	4550	2435	2295	38591	20264	18328
2011	3711	1907	1805	3961	2040	1921	4475	2304	2172	8740	4196	3743	7059	3863	3288	7130	3821	3309	4731	2541	2385	39202	20580	18623
2012	3707	1904	1803	3884	1999	1885	4391	2260	2131	8052	4245	3807	7241	3949	3378	7402	3969	3432	4926	2654	2481	39812	20894	18917
2013	3714	1908	1806	3814	1963	1851	4273	2201	2073	8172	4297	3875	7415	4025	3465	7675	4118	3557	5135	2774	2585	40422	21210	19212
2014	3725	1914	1811	3755	1932	1824	4150	2139	2011	8285	4344	3941	7568	4026	3543	7949	4267	3682	5359	2909	2696	41030	21524	19508
2015	3732	1917	1815	3714	1910	1804	4051	2089	1963	8376	4381	3995	7691	4087	3603	8223	4415	3808	5598	3039	2814	41640	21838	19802

Source:- National Institute of Population Studies (NIPS) Islamabad.

**Table S.6.2 Population Projections by Gender and Age Group - Sindh (Urban) 1998-2015**

Year	00-04			05-09			10-14			15-24			25-34			35-49			50+			Total		
	Total	Male	Female	Total	Male	Female	Total	Male	Female	Total	Male	Female	Total	Male	Female	Total	Male	Female	Total	Male	Female	Total	Male	Female
1998	2104	1075	1029	2004	1064	940	1969	1048	921	3166	1592	1574	2187	1176	991	1791	1002	789	1805	945	855	14991	7902	7069
1999	2143	1092	1052	2058	1089	969	1988	1059	929	3290	1653	1637	2231	1233	1028	1879	1004	835	1846	958	878	15486	8158	7328
2000	2171	1103	1003	2113	1114	990	2009	1070	939	3410	1712	1698	2367	1291	1076	2014	1129	885	1896	934	904	15982	8413	7569
2001	2178	1105	1073	2187	1148	1039	2020	1077	943	3530	1771	1759	2476	1350	1125	2136	1198	938	1955	1023	932	16481	8672	7809
2002	2154	1093	1061	2297	1198	1099	2011	1074	337	3654	1531	1823	2586	1411	1172	2265	1271	994	2015	1054	961	16981	8932	8049
2003	2114	1074	1040	2417	1252	1165	1999	1070	929	3777	1830	1886	2698	1473	1224	2402	1349	1053	2081	1089	992	17488	9197	8289
2004	2072	1053	1019	2522	1299	1223	2000	1071	928	3891	1946	1946	2813	1537	1276	2545	1429	1116	2156	1126	1027	17999	9463	8534
2005	2042	1039	1003	2584	1327	1258	2030	1085	944	3992	1995	1997	2932	1602	1331	2694	1512	1182	2241	1174	1067	18515	9735	8782
2006	2022	1028	994	2594	1330	1264	2106	1121	965	4071	2034	2037	3056	1665	1388	2849	1598	1251	2337	1225	1112	19036	10004	9031
2007	2003	1018	985	2568	1316	1252	2218	1173	1045	4132	2065	2067	3184	1736	1447	3011	1887	1324	2440	1281	1160	19557	10276	9280
2008	1988	1010	978	2524	1294	1230	2340	1228	1111	4187	2094	2094	3314	1806	1509	3178	1979	1400	2554	1342	1212	20086	10553	9534
2009	1979	1005	974	2477	1270	1207	2446	1277	1169	4248	2124	2124	3446	1875	1571	3352	1874	1478	2679	1409	1270	20627	10834	9793
2010	1979	1005	974	2443	1253	1190	2512	1306	1206	4327	2162	2165	3579	1944	1634	3531	1972	1558	2817	1483	1334	21188	11125	10061
2011	1992	1011	981	2420	1241	1179	2526	1311	1215	4429	2211	2218	3716	2015	1701	3715	2075	1641	2967	1562	1405	21765	11428	10340
2012	2015	1022	992	2398	1228	1169	2507	1300	1206	4547	2267	2280	3860	2089	1771	3906	2181	1725	3129	1648	1481	22362	11735	10624
2013	2043	1037	1006	2379	1218	1161	2469	1281	1188	4672	2326	2346	4002	2161	1841	4102	2290	1812	3303	1740	1564	22970	12053	10918
2014	2075	1053	1022	2368	1212	1156	2428	1260	1168	4794	2383	2411	4136	2229	1907	4304	2402	1902	3491	1839	1652	23596	12378	11218
2015	2105	1068	1037	2367	1211	1156	2400	1245	1154	4905	2433	2472	4253	2289	1965	4511	2516	1994	3693	1946	1746	24234	12708	11524

Source:- National Institute of Population Studies (NIPS) Islamabad..

**Table S.6.3 Population Projections by Gender and Age Group - Sindh (Rural) 1998-2015**

Year	00-04			05-09			10-14			15-24			25-34			35-49			50+			Total		
	Total	Male	Female	Total	Male	Female	Total	Male	Female	Total	Male	Female	Total	Male	Female	Total	Male	Female	Total	Male	Female	Total	Male	Female
1998	2389	1248	1141	1694	904	790	1990	1036	954	3307	1865	1442	2537	1329	1209	2166	1110	1056	1603	767	836	15686	8259	7428
1999	2395	1247	1147	1704	908	796	1976	1031	948	3376	1803	1473	2616	1371	1245	2268	1156	1099	1612	772	840	15930	8390	7548
2000	2387	1241	1146	1716	911	804	1966	1025	941	3437	1837	1499	2692	1412	1280	2351	1208	1143	1625	786	845	16173	8514	7658
2001	2385	1222	1133	1739	920	819	1945	1018	930	3493	1965	1525	2786	1452	1314	2447	1253	1139	1640	789	851	16385	8624	1761
2002	2388	1188	1101	1790	941	849	1904	995	908	3549	1998	1551	2838	1490	1348	2550	1311	1238	1858	799	858	16577	8722	7853
2003	2203	1143	1059	1848	965	883	1857	972	884	3598	2024	1574	2907	1528	1380	2653	1364	1290	1677	811	867	16743	8807	7937
2004	2114	1099	1015	1892	983	910	1812	954	806	3635	2043	1592	2974	1563	1411	2757	1411	1340	1699	824	576	16890	8683	8010
2005	2039	1060	979	1904	984	919	1804	945	860	3655	2054	1600	3337	1597	1440	2857	1468	1389	1727	840	887	17023	8948	8074
2006	1976	1028	948	1874	967	906	1827	953	874	3649	2054	1596	3997	1628	1468	2956	1517	1438	1757	859	899	17136	9007	8129
2007	1974	926	918	1814	937	877	1876	972	904	3523	2043	151	3155	1660	1496	2053	1566	1487	1793	880	912	17228	9054	8175
2008	1854	965	889	1739	899	840	1932	995	936	3557	2025	1561	3210	1688	1421	3150	1613	1536	1830	903	927	17302	9088	8212
2009	1801	937	863	1662	861	801	1975	1010	965	3550	2008	1542	3260	1714	1545	3242	1659	1583	1871	927	944	17361	9116	8243
2010	1755	914	842	1596	827	769	1983	1011	972	3523	1994	1529	3302	1737	1567	3330	1704	1627	1914	952	961	17403	9139	8267
2011	1719	895	824	1541	799	742	1949	993	957	3511	1885	1525	3343	1756	1587	3415	1746	1668	1959	979	980	17437	9154	8283
2012	1692	882	811	1486	771	716	1884	960	925	3505	1978	1527	3381	1774	1607	3496	1788	1707	2006	1006	1000	17450	9159	8293
2013	1671	871	800	1435	745	690	1804	920	885	3500	1971	1529	3413	1788	1624	3573	1828	1745	2056	1034	1021	17452	9157	8294
2014	1650	861	789	1387	720	688	1722	879	843	3491	1961	1530	3432	1897	1636	3645	1865	1780	2107	1063	1044	17434	9146	8290
2015	1627	849	778	1347	699	648	1651	844	809	3471	1948	1523	3438	1798	1638	3712	1899	1814	2160	1093	1068	17406	9130	8276

Source:- National Institute of Population Studies