

North West Frontier Province

Demographic Profile

In 2001, NWFP had an estimated total population of 19,165,000 (13.5% of the total population of the country), residing in 24 districts. In terms of population, with an average population density of 238.1 persons per square kilometer, NWFP has 16.9% of its population living in urban areas. The average household size is 8 persons per household.

Administrative Structure of the Education Department

The following broad rules have been instrumental in decentralizing the education sector in the province:-

- ❖ **Decentralization of Authority**

The district education and literacy departments have been delegated administrative and adequate financial powers to ensure better service delivery and overall development of education and literacy.

- ❖ **Assigning of Planning and Implementation Functions to the District Level**

Preparation of need-based development plan and its implementation is being done at district level to achieve the targets fixed for the districts.

- ❖ **Retaining Policy and Regulation Functions at Secretariat Level**

The policy and regulation functions have been retained with the Administrative Department at the Secretariat level

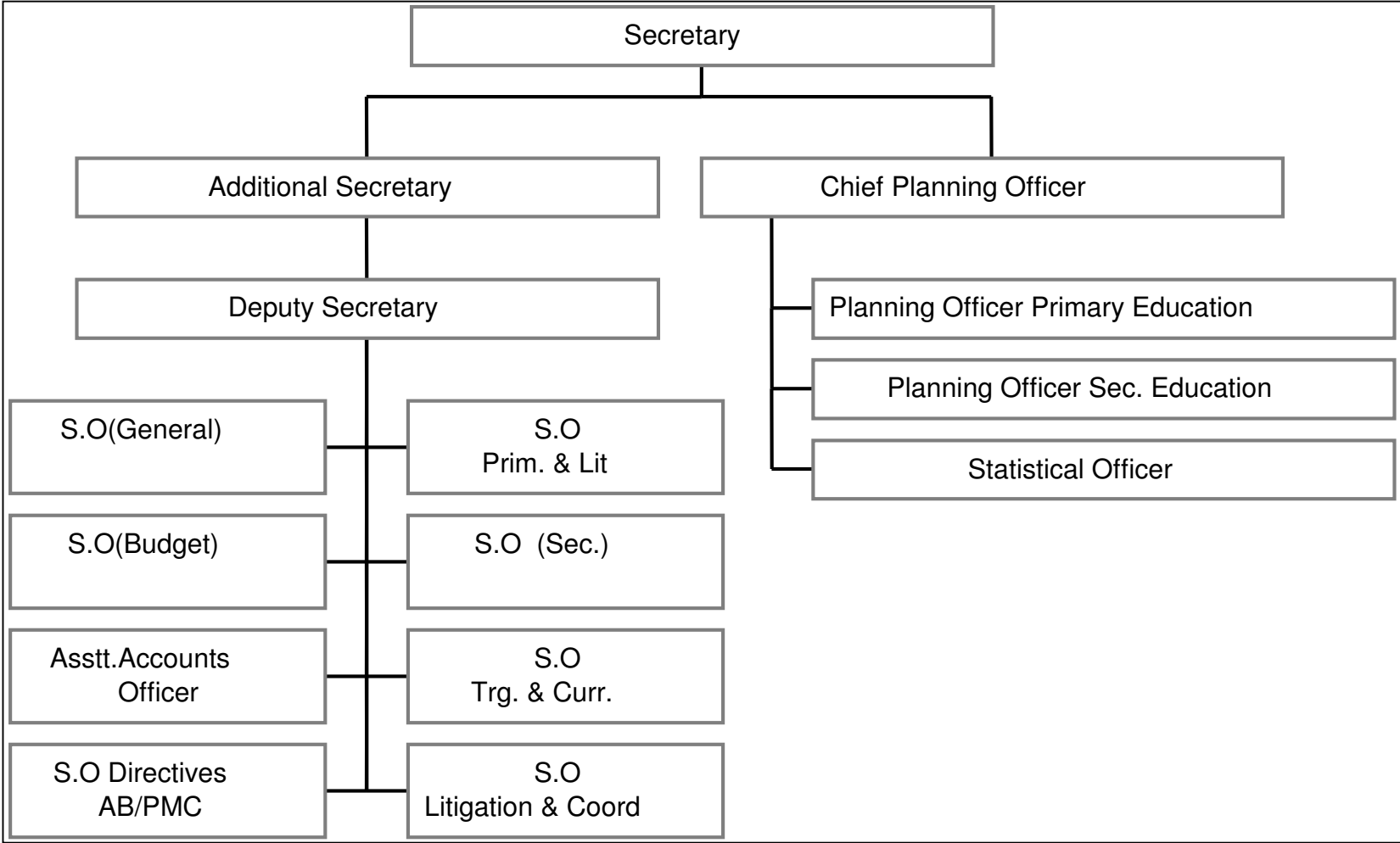
- ❖ **Cost Effectiveness/Economy**

The financial implications have been calculated on a standard administrative structure across all districts. However, in smaller districts a full set-up has not been put in place.

- ❖ **Avoiding Duplication of Efforts**

A combined department of Elementary Education and Literacy has been established at the district level.

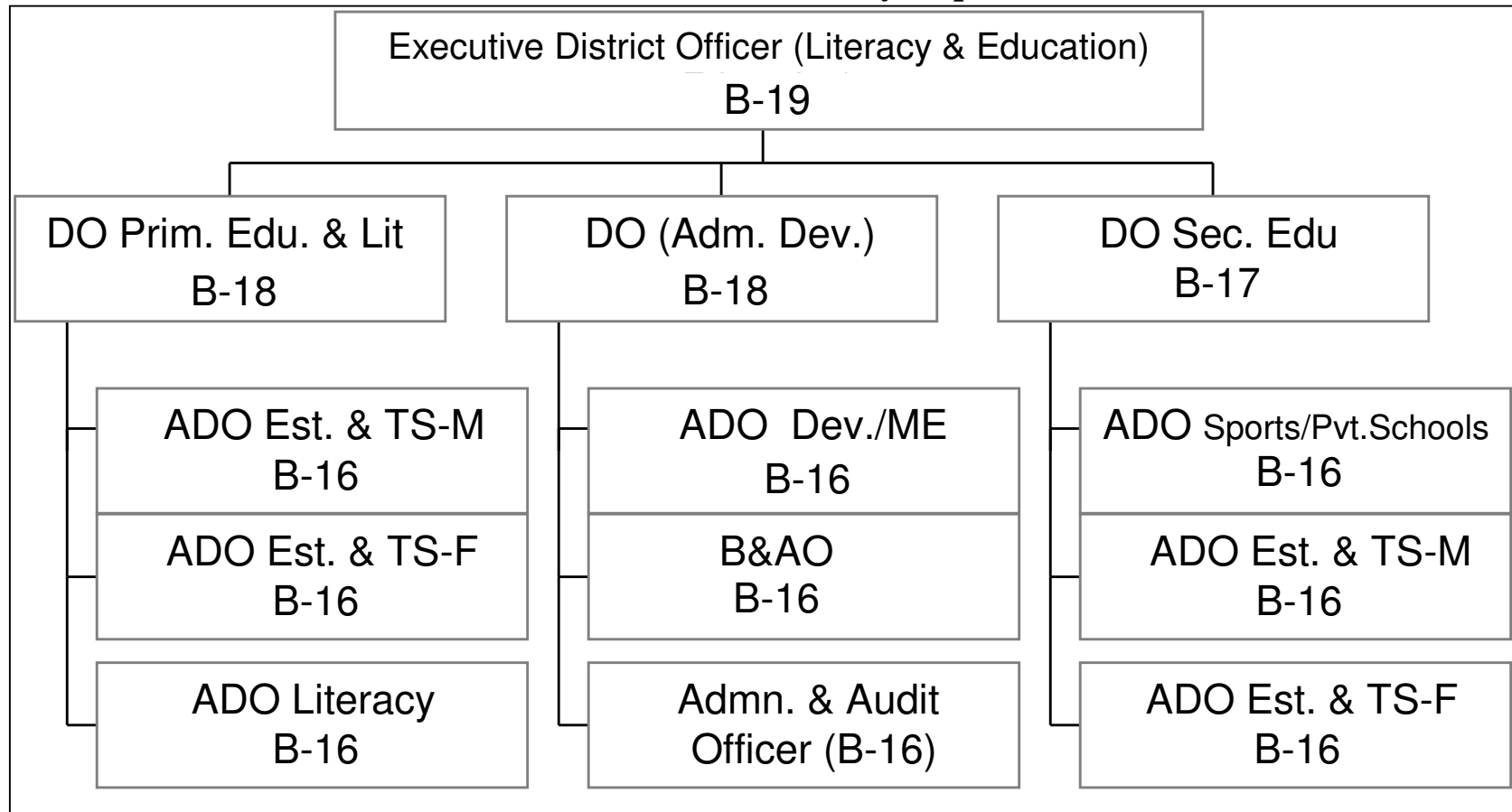
Schools and Literacy Department



Schools and Literacy Department:

- ❖ Formulation of policies, strategies and regulations for primary education and literacy.
- ❖ Processing of development projects
- ❖ Monitoring and review of development projects and schemes in coordination with concerned Directorates/PIUs.
- ❖ Formulation of SAP operational plan and review of its progress
- ❖ Improvement of literacy and quality/standard at primary education level financial management (recurring/non-recurring budgets) and auditing of provincial level releases to Primary Education and Literacy Department including PAC/DAC
- ❖ Regulation, registration and supervision of private teachers' training institutions
- ❖ Preparation of draft Acts/Ordinances as per need for the approval of the provincial assembly/Chief Executive of the province
- ❖ Attending to the questions/queries of the Provincial/National Assemblies and Senate
- ❖ Dealing with the matters related to autonomous bodies like Text Book Board and Frontier Education Foundation
- ❖ Inter-district postings/transfers of officers of provincial cadre (BPS-17) and above) in primary education on recommendations of the concerned directorates of education
- ❖ Processing of selection grade, move-over, pension, GP fund final payment and promotion cases for approval of the competent forum at provincial level in accordance with the approved policy/four-tier formula
- ❖ Coordination with the federal government and concerned directorates of education
- ❖ Inter-provincial admissions on reciprocal basis
- ❖ Performance evaluation reports of provincial cadre officers
- ❖ Processing the cases of short and long -term foreign visits/training and award of scholarship for approval of the competent forum
- ❖ Any other task assigned by the government.

District Education & Literacy Department



District Population

In NWFP, Peshawar, the provincial metropolis, is the largest city of the province with a total population of 2,181,000 persons; Tank, with 257,000 persons, is the district with the least population in NWFP. NWFP has several major districts with high levels of population. These include Peshawar, Mardan, Swabi, Mansehra and Charsadda. In the context of education, districts with very high primary-school aged population are Peshawar (0.33 million), Mardan (0.25 million) and Swat (0.22 million). Also, Peshawar, Swat and Charsadda, as well as Haripur, have high levels of middle and high school aged population (Table N.1).

Schools, Enrolment and Teachers

NWFP has a total of 22,375 primary schools with 14,734 for boys and 7,641 schools for girls (Table N.2.1). Every district has more boys' schools than girls' schools. Mansehra, with 1,500 boys and 640 girls' schools and Swat, with 1,345 boys and 634 girls' schools are the two districts with most schools. Tank has the lowest number of both boys' (206) and girls' (121) schools. Boys' enrolment is highest in Battagram and lowest in Tank; while girls' enrolment is highest in Peshawar and lowest in Kohistan. Swat has the highest number of teachers in both boys' and girls' schools; Tank has the lowest number of teachers in each of the two types of schools.

School Participation

In government primary schools, gross enrolment rates for boys range between 92% (Karak) and 45% (Kohistan). For girls, the range is much wider – between 93% in Abbotabad and 13% in Kohistan (Table N.3.1). Overall participation rates of school-going children aged 5-9 years vary between 48.86 (Abbotabad) and 4.49% (Kohistan). Peshawar and Haripur are the other two districts with participation rates above 40% while Shangla, Battagram, Lower Dir, Buner and Tank, have relatively low (below 20%) participation rates (Table N.3.2).

Literacy Rates and Ranking

Literacy rates in NWFP districts range between 56.61 (Abbotabad) and 10.37% (Musa Khel). Haripur has a literacy rate of 53.72% and districts with literacy rates between 40%-45% include Kohat; Nowshera; Karak; Peshawar and Chitral (Table N.4.1). Districts of very low literacy rates (below 20%) include Battagram; Kohistan and Musa Khel.

Female literacy rates (15+ years) are high (over 30%) in only two NWFP districts i.e., Abbotabad and Haripur. Shangla and Kohistan have the lowest female literacy rates of 3%. For females (10-14 years), literacy rates are better, with Abbotabad, Haripur achieving a literacy rate of 68% (Table N.4.2); for this age group of females, Shangla (7%); Battagram (11%) and Upper Dir (13%) have relatively low literacy rates.

In NWFP, ranking of district displays a wide range. Planners should, however, focus more on the lower-ranked districts of Tank; Buner; Upper Dir; Battagram and Kohistan (Table S.4.3).

Other Social Indicators

Of its total population, NWFP has an average of 47.2% in the age group of <15 years (Table N.5). All districts have a high ratio of young population i.e., with 42%-52% of population aged below 15 years. Peshawar has the highest proportion of urban population i.e., 48.7%, while Battagram, Buner and Kohistan have 100% rural populations. Household size is, generally, very high ranging between 10 persons per household (Karak) to 6.4 persons per household (Abbotabad).

Population Projections (1998-2015)

To facilitate the planning of the various sectors of the economy, the National Institute for Population Studies (NIPS), Islamabad has generated 15-year population projections for each province, separately for urban and rural population (Tables N.6.1-N.6.3).

Table N.1 District Population NWFP (1998)

District	Population (5-9 years)	Population (10-14 years)		Population (15+ years)	
	<i>Total</i>	Total	Female	<i>Total</i>	<i>Female</i>
Lower Dir	135330	159638	48820	287610	182172
Swat	221583	182709	85515	351709	315056
Shangla	77656	60053	27772	223409	110038
Buner	90101	68995	32208	257353	134147
Malakand P.A	79174	64191	30576	230131	111822
Kohistan	86790	70715	25658	238446	107600
Mansehra	190576	167359	80134	628445	331405
Batagram	54734	43374	20262	160081	78213
Abbotabad	132384	126296	61434	504198	257468
Haripur	101670	182709	46782	642977	205622
Mardan	247479	60053	97218	223409	377713
Swabi	169383	140496	66519	550891	281191
Charsadda	175101	138352	64717	543050	263363
Peshawar	331410	282576	134877	1088963	510716
Nowshera	139399	120063	57603	483455	230174
Kohat	92003	80970	38854	302038	154323
Hangu	56089	45903	21592	157653	85590
Karak	76413	61271	29576	213912	114713
Bannu	120758	82074	38190	351709	171641
Lakki Marwat	89486	61583	28537	247706	214015
Dera Ismail Khan	148066	111602	52302	454521	214015
Tank	42728	31314	14044	43322	59546

Source: Population Census Organization, District Census Reports (DCRs)

Note: Roughly 52% population of 5-9 years age group is male and 48% is female.

Table N.2 Number of Schools, Enrolment and Teachers in Public Sector Schools NWFP Districts 2000-2001

District	Boy Schools			Girl Schools			Total		
	Schools	Enrol	Teachers	Schools	Enrol	Teachers	Schools	Enrol	Teacher
Abbottabad	1044	81411	2533	550	46182	1431	1594	127593	3964
Bannu	666	45088	1532	458	21575	849	1124	66663	2381
Chitral	464	31771	873	153	10069	321	617	41840	1194
Charsadda	600	79796	2581	400	32302	1068	1000	112098	3649
D.I.Khan	796	54040	1904	420	26360	1051	1216	80400	2955
Dir Payan	763	74433	1900	382	35595	879	1145	110028	2779
Karak	432	49239	1322	295	19235	694	727	68474	2026
Kohat	573	73548	1986	349	33910	856	922	107458	2842
Kohistan	762	22985	1328	230	4081	176	992	27066	1504
Mansehra	1500	112747	3588	640	42446	1531	2140	155193	4919
Mardan	538	116369	2984	533	60833	1550	1271	177202	4534
Malakand	337	42232	1104	209	23559	585	546	45791	1689
Nowshera	431	58050	2155	319	34748	951	750	92798	3106
Peshawar	691	114500	3067	408	62456	1683	10099	176956	4750
Swat	1345	127986	3920	634	46674	1566	1979	174660	5486
Swabi	587	82091	2257	421	47489	1090	1008	129580	3347
Buner	412	45108	1152	149	10886	300	561	55994	1552
Haripur	693	57379	1832	296	30834	920	989	88213	2752
Lakki	545	44340	1308	245	10926	510	790	55266	1811
Tank	206	15176	530	121	8894	233	327	24070	763
Battagram	471	257883	1027	206	9330	267	677	35113	129
Dir Bala	678	59522	1541	223	15393	429	901	74915	197
NWFP	14734	1413594	42234	7641	633777	18940	22375	2047371	61174

Note: The enrolment of boy schools includes both gender students and vice versa girls schools
 Number of Teachers is based on September census.
 Source: NWFP Education Management Information System (EMIS)

**Table N.3.1 Gross Enrolment Ratios in Govt. Primary Schools
in NWFP by District and Gender (2000-01)**

District	Enrolment			Population (5-9) Years			Gross Enrolment Ratios		
	Boys	Girls	Total	Boys	Girls	Total	Boys	Girls	Total
Abbottabad	65308	62285	127593	72066	66849	138915	91%	93%	92%
Bannu	43325	23338	66663	68539	61493	130032	63%	38%	51%
Chitral	26148	14692	41840	30029	28442	58471	87%	55%	72%
Charsadda	73485	38613	112098	99407	89484	18891	74%	43%	59%
D.I.Khan	50816	29584	80400	84527	76781	161308	60%	39%	50%
Dir Payan	67817	42211	110028	74721	71322	148043	88%	59%	74%
Karak	39834	28640	68474	43190	40056	83246	92%	71%	82%
Kohat	70167	37291	107458	83853	77441	161294	84%	48%	67%
Kohistan	22317	4749	27066	49257	37742	86999	45%	13%	31%
Mansehra	92530	62663	155193	105777	97257	203034	87%	64%	76%
Mardan	108613	68589	177202	140121	127750	267871	78%	54%	66%
Malakand	37399	28392	65791	45050	41428	86478	83%	69%	76%
Nowshera	55838	36960	92798	78093	72363	150456	72%	51%	62%
Peshawar	112835	64121	176956	189481	174374	363855	60%	37%	49%
Swat	116889	57771	174660	170553	156156	326709	69%	37%	53%
Swabi	77558	52022	129580	94967	88136	183103	82%	59%	71%
Buner	39127	16867	55994	52331	47391	99722	75%	36%	56%
Haripur	48825	39388	88213	55351	52373	107724	88%	75%	82%
Lakki	39029	16237	55266	51086	46151	97237	76%	35%	57%
Tank	14277	9793	24070	24752	21640	46392	58%	45%	52%
Battagram	22344	12769	35113	30363	27949	58312	74%	46%	60%
Dir Bala	52882	22033	74915	59805	56001	115806	88%	39%	65%

Source:- NWFP Education Management Information System.

Table N.3.2 Participation of School-going Children (5-9 years) NWFP (1998)

District	Population (5-9)	School Going Upto Primary Level	Participation Rate 1998 (%)	District	Population (5-9)	School Going Upto Primary Level	Participation Rate 1998 (%)
Lower Dir	135330	21178	15.65	Mardan	247479	70885	28.64
Swat	221583	42767	19.30	Swabi	169383	43912	25.92
Shangla	77656	8843	11.39	Charsadda	175101	32565	18.60
Buner	90131	14749	16.36	Peshawar	331410	138532	41.80
Malakand P.A	79174	16582	20.94	Nowshehra	139399	42608	30.57
Kohistan	86790	3899	4.49	Kohat	92003	30178	32.80
Mansehra	190576	67554	35.45	Hangu	56089	11148	19.88
Batagram	54732	6670	12.19	Karak	76413	20659	27.04
Abbottabad	132384	64682	48.86	Bannu	120758	25203	20.87
Haripur	101670	42777	42.07	Lakki Marwat	89486	22275	24.89
Tank	42728	7191	16.83	D.I.Khan	148066	30900	20.87

Source:- Population Census Organization
UNESCO Islamabad.

**Table N.4.1 Literacy Rate (10 Years & above) by Gender and Location
NWFP Districts 1998 and 2001**

	Years	All Areas			Urban			Rural		
		Both Sexes	Male	Female	Both Sexes	Male	Female	Both Sexes	Male	Female
NWFP										
	1998	35.41	51.39	18.82	54.33	67.48	39.10	31.29	47.65	14.69
	2001	40.43	58.00	22.70	58.48	71.93	43.31	36.44	54.75	18.65
District										
Chitral	1998	40.30	58.02	22.09	56.65	71.53	38.19	38.40	56.29	20.42
	2001	53.51	72.43	47.89	-	-	-	50.08	69.56	42.19
Upper Dir	1998	21.21	36.10	6.10	41.05	58.59	22.61	20.34	35.34	35.09
	2001	-	-	-	-	-	-	-	-	-
Lower Dir	1998	29.90	48.76	12.25	12.25	43.51	60.54	24.12	28.97	47.86
11.52	2001	-	-	-	-	-	-	-	-	-
Swat	1998	28.75	43.16	13.45	48.05	62.89	31.18	25.53	39.75	10.62
	2001	40.44	57.31	29.86	56.76	71.23	44.33	36.16	53.54	25.33
Shanola	1998	14.73	25.16	3.71	-	-	-	14.73	25.16	3.71
	2001	-	-	-	-	-	-	-	-	-
Buner	1998	22.62	38.18	7.65	-	-	-	22.62	38.18	7.65
	2001	-	-	-	-	-	-	-	-	-
Malakand P.A	1998	39.50	55.21	22.74	39.29	51.40	25.26	39.52	55.64	22.48
	2001	49.42	65.84	35.63	-	-	-	49.45	66.52	35.03
Kohistan	998	11.80	17.23	2.95	-	-	-	11.08	17.23	2.95
	2001	24.60	41.76	4.62	-	-	-	24.60	41.76	4.62
Mansehra	1998	36.32	50.90	22.71	68.49	76.74	59.65	34.87	49.24	20.65
	2001	46.42	63.79	32.70	75.09	82.44	67.92	45.22	61.94	30.69
Bataoram	1998	18.31	29.40	6.48	-	-	-	18.31	29.40	6.48
	2001	-	-	-	-	-	-	-	-	-

		All Areas			<i>Both Sexes</i>	<i>Urban</i>		<i>Rural</i>		
		Both	Male	Female		<i>Male</i>	<i>Female</i>	Both	Male	Female
Abbottabad	<i>1998</i>	56.61	74.52	39.11	<i>76.73</i>	<i>85.69</i>	<i>64.71</i>	51.85	71.33	34.18
	<i>2001</i>	67.80	84.93	56.97	<i>84.48</i>	<i>92.35</i>	<i>75.09</i>	63.15	82.12	54.25
Haripur	<i>1998</i>	53.72	70.45	37.40	<i>69.73</i>	<i>79.36</i>	<i>59.54</i>	51.39	69.09	34.34
	<i>2001</i>	-	-	-	-	-	-	-	-	-
Mardan	<i>1998</i>	36.45	53.50	18.38	<i>48.27</i>	<i>62.83</i>	<i>31.86</i>	33.31	50.92	14.93
	<i>2001</i>	44.76	63.41	26.83	<i>55.04</i>	<i>69.70</i>	<i>39.41</i>	41.32	61.16	23.22

Sources: Population Census Organization
UNESCO; Islamabad.

Table N.4.2 Population and Literacy Rates NWFP Districts (1998)

District	Female				Total				Female				Total			
	Population 15+	Literacy Rates	Illiterate 15+	Illiteracy Rate	Population 15+	Literacy Rate	Illiterate 15+	Illiteracy Rate	Population 10-14	Literacy Rate	Illiterate 10-14	Illiteracy Rate	Population 10-14	Literacy Rates	Illiterate 10-14	Illiteracy Rate
Abbotabad	257468	32%	174509	68%	504198	51%	245001	49%	61434	68%	19655	32%	126296	77%	28569	23%
Hariipur	205622	30%	143120	70%	402614	43%	209065	52%	46782	68%	14879	32%	95919	77%	21672	23%
Peshawar	510716	23%	392686	77%	1088963	39%	659071	61%	134877	36%	86022	64%	282576	51%	139301	49%
Kohat	154323	19%	124752	81%	302038	40%	180929	60%	38854	41%	23073	59%	80970	59%	33329	41%
Nowshera	230174	18%	187872	82%	483455	39%	293339	61%	57603	40%	34626	60%	120063	55%	53704	45%
Mansehra	331405	18%	270974	82%	628445	32%	428821	68%	80134	41%	47117	59%	167359	53%	77955	47%
Malakand P.A	111822	17%	93020	83%	230131	35%	150349	65%	30576	44%	17002	56%	64191	57%	27714	43%
D.I.Khan	214015	16%	180544	84%	454521	29%	321492	71%	52302	27%	38212	73%	111602	39%	67625	61%
Chitral	81992	15%	69666	85%	1105997	5%	1049855	95%	19652	52%	9525	48%	39980	67%	13076	33%
Mardan	377713	14%	324971	86%	772830	32%	523256	68%	97218	36%	62668	64%	205606	52%	98513	48%
Swabi	281191	14%	242515	86%	550891	31%	378604	69%	66519	37%	41635	63%	140496	55%	63664	45%
Karak	114713	13%	99985	87%	213912	31%	133682	62%	29576	39%	18162	61%	61271	57%	26149	43%
Charsada	263363	11%	235381	89%	543050	27%	394596	73%	64717	28%	46545	72%	138552	46%	74990	54%
Swat	315056	11%	290176	92%	642977	27%	488497	76%	85515	24%	64713	76%	182709	36%	108016	59%
Banu	171641	10%	155162	90%	351709	29%	248697	71%	38190	24%	29114	76%	82074	44%	45789	56%
Lower Dir	182172	8%	166894	92%	287610	32%	196290	68%	48820	27%	35803	73%	159638	27%	117225	73%
Hangu	85590	8%	79009	92%	157653	28%	113992	72%	21592	18%	17628	82%	45903	40%	27480	60%
Tank	59546	7%	43322	73%	122527	24%	76735	63%	14044	16%	15548	111%	31314	35%	23182	74%
Lakki Marwat	124379	6%	116742	94%	247706	26%	183644	74%	28537	19%	22974	81%	61583	45%	33754	55%
Buner	134147	5%	127008	95%	257353	20%	207002	80%	32208	17%	26594	83%	68995	34%	45502	56%
Batagram	76213	5%	74074	95%	160081	17%	132329	83%	20262	11%	18015	89%	43374	22%	33874	78%
Upper Dir	139123	4%	133284	96%	276398	19%	223786	81%	40498	13%	35385	87%	85514	28%	61365	72%
Shangle	110036	3%	106327	97%	223409	14%	192037	86%	27772	7%	25866	93%	60053	18%	49164	82%
Kohistan	107600	3%	104861	97%	238446	11%	213399	89%	25658	5%	24468	95%	70715	13%	61520	80%
NWFP	4642022	13%	3936854	86%	10246914	29%	7244468	71%	1163340	31%	775229	70%	2526753	45%	1333132	55%

Table N.4.3 District Ranking by Literacy Rate (10+ years) and Illiterate Population NWFP (1998)

District	Literacy Rate (%) 10+ years	Illiterate Population 10+ years (in number)	Ranking Order
Abbottabad	56.61	273,570	1
Haripur	53.72	230,737	2
Kohat	44.06	214,258	3
Nowshera	42.50	347,518	4
Karak	41.92	159,831	5
Peshawar	41.79		6
Chitral	40.30	123,031	7
Malakand P.A.	39.50	178,063	8
Mardan	36.45	621,769	9
Mansehra	36.32	506,766	10
Swabi	36.03	442,268	11
Charsada	31.11	469,586	12
Hangu	30.50	141,462	13
Lower Dir	29.90	313,515	14
Lakki Marwat	29.71	217,398	15
Swat	28.75	588,304	16
Tank	26.25	113,459	17
Buner	22.62	252,534	18
Upper Dir	21.21	285,151	19
Batagram	18.31	166,203	20
Kohistan	11.08	274,919	21

Source:- EFA Wing, Ministry of Education

Table N.5 District Wise Statistics on Social Indicators NWFP

Area	CENSUS POPULATION FIRST MARCH 1998			Pop. Density per sq K.M	BROAD AGE GROUPS (% DISTRIBUTION)			% of Pop age 60 and over	Total Fertility Rate	% Urban Pop.	% Literate in Pop.age 10 & over			Persons per house hold	Population Estimated for the year (in thousand)			
	Both Sexes	Male	Female		< 15	15-64	65 and over				Both Sexes	Male	Fem		2001	2004	2011	2021
<i>Province & District</i>	<i>Both Sexes</i>	<i>Male</i>	<i>Female</i>		<i>< 15</i>	<i>15-64</i>	<i>65 and over</i>				<i>Both Sexes</i>	<i>Male</i>	<i>Fem</i>		<i>2001</i>	<i>2004</i>	<i>2011</i>	<i>2021</i>
NWFP	17743645	9088936	8654709	238.1	47.2	49.8	3.0	4.9	5.1	16.9	35.4	51.4	18.8	8.0	19165	20453	23571	27689
Abbottabad	880666	440718	439948	447.7	42.8	53.8	3.4	5.5	4.7	17.9	56.3	74.5	39.1	6.4	952	1016	1171	1375
Bannu	677346	349976	327370	552.0	48.1	49.5	2.4	4.2	4.9	7.0	32.1	50.8	12.2	9.7	732	781	900	1057
Batagram	307278	158563	148715	203.9	47.9	48.7	3.4	5.4	5.7	0.0	18.3	29.4	6.5	6.6	332	354	408	480
Buner	506048	253035	253013	271.0	49.2	47.7	3.1	5.0	5.5	0.0	22.6	38.2	7.7	9.0	547	584	673	790
Charsada	1022364	530724	491640	1026.5	46.8	50.0	3.2	5.2	5.0	18.9	31.1	46.9	14.1	8.0	1105	1179	1359	1596
Chitral	318689	162082	156607	21.5	47.9	49.3	2.8	5.1	4.2	9.6	40.3	58.0	22.1	7.9	344	368	424	498
Dera Ismail Khan	852995	448990	404005	116.4	46.7	50.4	2.9	4.7	5.1	14.8	31.3	43.2	17.9	7.5	922	983	1133	1331
Hangu	314529	154021	160508	286.7	49.8	47.5	2.6	4.3	5.6	20.4	30.5	53.5	9.8	10.4	340	363	418	491
Haripur	692228	345561	346667	401.3	41.9	54.3	3.8	6.0	4.9	12.0	53.7	70.5	37.4	6.6	748	798	920	1081
Karak	430796	211393	219403	127.8	50.3	46.2	3.4	5.2	5.0	6.5	41.9	68.2	18.1	10.0	466	497	673	673
Kohat	562644	282844	279800	221.0	46.3	50.5	3.2	5.1	4.8	27.0	44.1	65.0	23.5	7.4	608	649	748	879
Kohistan	472570	261942	210628	63.1	50.6	47.1	3.3	5.4	5.0	0.0	11.1	17.2	2.9	6.4	510	545	628	737
Lakki Marwat	490025	250336	239689	154.9	49.5	47.4	3.2	5.2	4.9	9.6	29.7	50.3	8.6	9.2	530	565	651	765
Lower Dir	717649	355728	361921	453.3	51.8	45.7	2.5	4.2	5.2	6.2	29.9	48.8	12.3	9.3	776	828	954	1121
Malakand	452291	233556	218735	475.0	49.1	48.2	2.7	4.4	5.1	9.5	39.5	55.2	22.7	9.1	489	522	601	706
Mansehra	1152839	571881	580958	252.0	45.5	50.6	3.9	6.0	5.7	5.3	36.3	50.9	22.7	6.7	1246	1330	1533	1800
Mardan	1460100	753442	706658	894.7	47.1	50.0	2.9	4.8	5.7	20.2	36.5	53.5	18.4	8.4	1578	1684	1940	2279
Nowshera	874373	455598	418775	500.0	44.7	52.4	2.9	4.7	4.9	26.0	42.5	60.6	22.7	7.7	945	1008	1162	1365
Peshawar	2019118	1061101	958017	1606.3	46.1	51.5	2.4	4.1	4.9	48.7	41.8	55.9	25.9	8.5	2181	2328	2683	3151
Shangla	434563	223748	210815	274.0	48.6	48.4	3.0	4.9	4.9	0.0	14.7	25.2	3.7	8.1	470	501	578	678
Swabi	1026804	516540	510264	66.0	46.3	50.3	3.4	4.5	5.5	17.5	36.0	54.0	18.3	7.7	1110	1184	1365	1603
Swat	1257602	648008	609594	235.6	48.9	48.5	2.6	4.3	4.9	13.8	28.7	43.2	13.4	8.8	1359	1450	1671	1963
Tank	238216	124331	113885	142.0	48.6	48.6	2.8	4.6	5.4	15.0	26.3	42.4	8.6	9.3	257	275	317	372
Upper Dir	575858	291582	284276	156.0	52.0	45.4	2.7	4.5	5.2	4.0	21.2	36.1	6.1	8.0	622	664	765	899

Table N.6.1 Population Projection by Gender and Age Group (1998-2015) NWFP (Total)

Year	00-04			05-09			10-14			15-24			25-34			35-49			50+			Total		
	Total	Male	Female	Total	Male	Female	Total	Male	Female	Total	Male	Female	Total	Male	Female	Total	Male	Female	Total	Male	Female	Total	Male	Female
1998	2754	1411	1343	2558	1300	1258	2636	1338	1297	3741	1863	1877	2307	1165	1142	2006	1041	965	1871	992	878	17873	9110	8760
1999	2769	1420	1349	2551	1298	1253	2663	1353	1310	3921	1956	1965	2408	1213	1196	2077	1074	1003	1914	1013	901	18303	9327	8977
2000	2782	1428	1354	2549	1299	1251	2682	1364	1318	4091	2043	2048	2516	1264	1253	2154	1109	1045	1960	1035	925	18734	9542	9194
2001	2791	1434	1357	2560	1306	1254	2679	1363	1316	4261	2132	2129	2630	1317	1313	2238	1147	1090	2006	1057	949	19165	9756	9408
2002	2791	1434	1357	2591	1325	1266	2641	1344	1297	4438	2226	2213	2751	1373	1377	2328	1189	1139	2054	1080	974	19594	9971	9623
2003	2787	1432	1356	2630	1348	1282	2589	1318	1271	4611	2318	2293	2877	1432	1445	2425	1235	1190	2103	1104	1000	20022	10187	9837
2004	2786	1431	1355	2668	1370	1298	2542	1294	1248	4765	2400	2365	2011	1496	1515	2527	1283	1245	2152	1128	1026	20453	10402	10052
2005	2791	1433	1358	2694	1385	1309	2521	1284	1236	4887	2466	2421	3153	1564	1589	2636	1333	1303	2207	1153	1054	20889	10618	10270
2006	2807	1442	1366	2705	1392	1313	2532	1292	1240	4972	2512	2460	3305	1639	1666	2749	1386	1363	2262	1179	1083	21332	10842	10491
2007	2831	1454	1377	2708	1394	1315	2563	1311	1252	5021	2544	2485	3468	1720	1749	2866	1440	1426	2317	1206	1111	21782	11069	10715
2008	2856	1467	1389	2708	1393	1315	2603	1334	1269	5066	2565	2501	3637	1804	1833	2990	1498	1492	2374	1233	1141	22234	11294	10940
2009	2876	1478	1399	2710	1394	1316	2642	1357	1285	5091	2580	2511	3807	1890	1917	3123	1560	1563	2436	1262	1174	22685	11521	11165
2010	2887	1483	1404	2718	1398	1320	2668	1372	1296	5112	2593	2519	3972	1975	1997	3268	1628	1640	2505	1294	1211	23130	11743	11387
2011	2888	1484	1404	2736	1407	1329	2680	1379	1301	5123	2602	2521	4142	2063	2079	3425	1703	1722	2578	1328	1250	23572	11966	11606
2012	2881	1480	1401	2761	1420	134	2683	1381	1302	5118	2602	2515	4320	2157	2163	3595	1783	1810	2655	1363	1293	24011	12186	11825
2013	2869	1474	1395	2788	1434	1354	2684	1381	1303	5106	2600	2507	4493	2249	2244	3771	1868	1903	2738	1400	1338	24449	12406	12044
2014	2852	1466	1387	2810	1445	1365	2686	1382	1304	5099	2599	2500	4647	2332	2315	3956	1957	1999	2829	1441	1338	24879	12622	12258
2015	2833	1456	1377	2823	1452	1371	2694	1386	1308	5106	2606	2501	4771	2398	2372	4146	2050	2097	2928	1487	1442	25301	12835	12406

Source:- National Institute of Population Studies (NIPS) Islamabad..

Table N.6.2 Population Projections by Gender and Age Group (1998-2015) NWFP (Urban)

Year	00-04			05-09			10-14			15-24			25-34			35-49			50%			Total		
	Total	Male	Female	Total	Male	Female	Total	Male	Female	Total	Male	Female	Total	Male	Female	Total	Male	Female	Total	Male	Female	Total	Male	Female
1998	468	242	226	346	180	166	399	208	191	588	307	281	431	218	213	448	223	225	359	162	177	3039	1560	1479
1999	476	246	230	350	182	168	407	211	196	624	325	299	455	229	226	469	232	238	369	186	184	3150	1611	1541
2000	484	250	235	355	184	171	415	215	200	661	343	317	481	241	241	493	242	251	381	190	191	3270	1665	1606
2001	492	253	239	362	187	174	420	217	203	698	363	335	509	254	256	518	253	265	394	196	198	3393	1723	1670
2002	499	257	242	371	193	179	420	217	202	737	384	353	539	268	271	546	265	280	408	203	205	3520	1787	1732
2003	505	260	245	383	199	183	417	216	201	777	406	371	571	283	288	576	279	296	423	210	213	3652	1853	1797
2004	513	264	248	394	206	188	416	216	200	816	427	388	606	300	306	608	294	314	439	218	221	3792	1925	1865
2005	522	269	253	404	212	193	420	218	202	850	446	403	644	319	325	644	311	333	457	227	230	3941	2002	1939
2006	534	276	258	413	216	197	430	224	206	880	463	417	687	340	347	682	328	353	476	235	240	4102	2082	2018
2007	548	283	265	421	221	200	443	231	212	906	478	429	733	363	370	721	346	375	495	245	251	4267	2167	2102
2008	563	291	272	429	225	204	458	240	218	931	491	439	782	387	395	765	366	398	516	255	262	4444	2255	2188
2009	577	299	279	438	230	208	474	248	225	954	505	450	834	414	421	813	388	424	540	265	274	4630	2349	2281
2010	591	306	285	449	235	213	488	257	232	979	518	460	888	441	447	867	413	453	566	278	288	4828	2448	2378
2011	604	313	291	462	243	220	501	264	238	1002	531	471	947	472	475	475	928	442	595	291	304	5059	2556	2485
2012	616	319	297	478	251	227	514	270	243	1023	543	480	1011	505	506	506	993	473	627	306	321	5262	2667	2595
2013	629	326	303	495	260	235	526	277	249	1045	555	490	1076	539	537	537	1064	506	661	321	339	5496	2784	2711
2014	640	332	308	512	269	243	543	290	264	1070	569	501	1139	572	567	567	1141	543	699	339	360	5741	2908	2833
2015	652	338	313	527	277	250	556	293	273	1099	585	514	1197	603	594	594	1223	582	741	359	382	5995	3037	2958

Source: National Institute of Population Studies (NIPS) Islamabad.

Table N.6.3 Population Projections by Gender and Age Group (1998-2015) NWFP (Rural)

Year	00-04			05-09			10-14			15-24			25-34			35-49			50+			Total		
	Total	Male	Female	Total	Male	Female	Total	Male	Female	Total	Male	Female	Total	Male	Female	Total	Male	Female	Total	Male	Feml	Total	Male	Female
1998	8286	1169	1117	2212	1120	1092	2237	1130	1106	3153	1556	1596	1876	947	929	1558	818	740	1512	810	701	14834	7550	7201
1999	2203	1174	1119	2201	1116	1085	2256	1142	1114	3297	1631	1666	1953	984	970	1608	842	765	1545	827	717	15053	7716	7436
2000	2298	1178	1119	2194	1115	1080	2267	1149	1118	3430	1700	1731	2035	1023	1012	1661	867	794	1579	845	734	15464	7877	7588
2001	2299	1181	1118	2198	1119	1080	2259	1146	1113	3563	1769	1794	2121	1063	1057	1720	894	825	1612	861	751	15772	8033	7738
2002	2292	1177	1115	2220	1132	1087	2221	1127	1095	3701	1842	1860	2212	1105	1106	1782	924	859	1646	877	760	16074	8184	7891
2003	2282	1172	1111	2247	1149	1099	2172	1102	1070	3834	1912	1922	2306	1149	1157	1749	956	894	1680	894	787	16370	8334	8040
2004	2273	1167	1107	2274	1164	1110	2126	1078	1048	3949	1973	1977	2405	1196	1209	1919	989	931	1715	910	805	16661	8477	8187
2005	2269	1164	1105	2290	1173	1116	2101	1066	1034	4037	2020	2018	2509	1245	1264	1992	1022	970	1750	926	824	16948	8616	8331
2006	2273	1166	1108	2292	1176	1116	2102	1068	1034	4092	2049	2043	2618	1299	1319	2067	1058	1010	1786	944	843	17230	8760	8473
2007	2283	1171	1112	2287	1173	1115	2120	1080	1040	4123	2066	2056	2735	1357	1379	2145	1094	1051	1822	961	860	17515	8902	8613
2008	2293	1176	1117	2279	1168	1111	2145	1094	1051	4135	2074	2062	2855	1417	1438	2225	1132	1094	1858	978	879	17790	9039	8752
2009	2299	1179	1120	2272	1164	1108	2168	1109	1060	4137	2075	2061	2973	1476	1896	2310	1172	1139	1896	997	900	18055	9172	8884
2010	2296	1171	1119	2269	1163	1107	2180	1115	1064	4133	2075	2059	3084	1534	1500	2401	1215	1187	1939	1016	923	18302	9295	9009
2011	2284	1171	1113	2274	1164	1109	2179	1115	1063	4121	2071	2050	3195	1591	1604	2497	1261	1236	1983	1037	946	18535	9410	9121
2012	2265	1161	1104	2283	1169	1114	2169	1111	1059	4095	2059	2035	3309	1652	1657	2600	1310	1289	2028	1057	972	18749	9519	9230
2013	2240	1148	1092	2293	1174	1119	2158	1104	1054	4061	2045	2017	3415	1710	1707	2707	1326	1345	2077	1079	999	18963	9622	9333
2014	2212	1134	1079	2298	1176	1122	2146	1098	1048	4029	2030	1999	3508	1760	1748	2815	1414	1401	2130	1102	1018	19138	9714	9425
2015	2181	1118	1064	2296	1175	1121	2138	1093	1045	4007	2021	1987	3574	1795	1778	2923	1468	1455	2187	1128	1060	19306	9798	9510

Source National Institute of Population Studies (NIPS) Islamabad.