

# *Balochistan*

## *Demographic Profile*

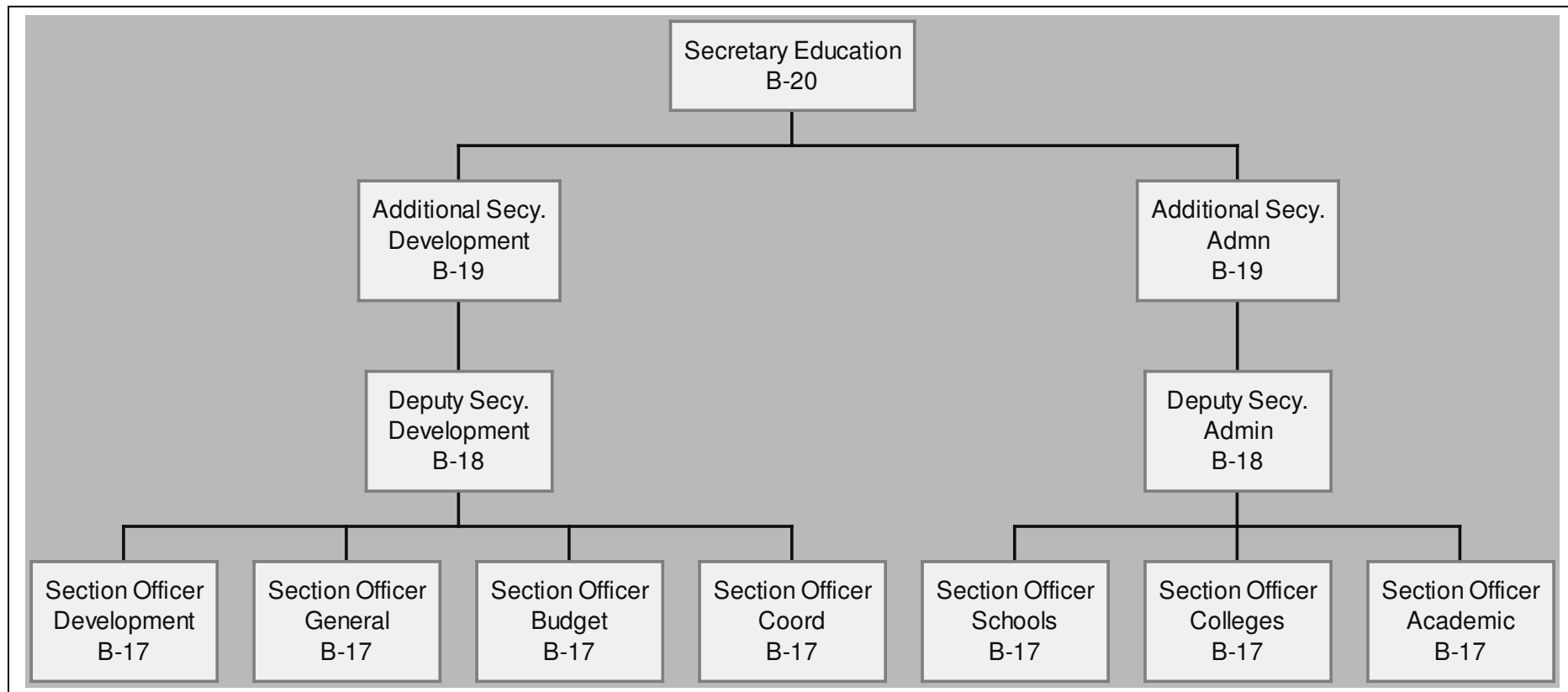
In 2001, Balochistan had an estimated total population of 7,101,000 (5% of the total population of the country), residing in 26 districts. In terms of population, with an average population density of 18.9 persons per square kilometer, NWFP has 23.9% of its population living in urban areas. The average household size is 6.7 persons per household.

## *Administrative Structure in Education Department*

The Secretariat has been assigned the following broad list of functions:

- ❖ Appointment of BS-17 and above of officers.
- ❖ Posting and transfer of officers BS-18 and above
- ❖ Deputation of all categories of staff to other Provinces
- ❖ Promotion/confirmation and move over to BS-18 and above
- ❖ Retirement and acceptance of resignation of officer BS-18 and above
- ❖ Retirement and acceptance of resignation of officers BS-18 and above
  - \* Grant of earned leave, extra ordinary leave, ex-Pakistan leave, study leave and LPR to B- 19 and above officers.
- ❖ Initiating disciplinary action against BS-19 and above officers
- ❖ Coordination with the federal government, inter departments, and the directorates at provincial level.
- ❖ Processing of training and study tours abroad
- ❖ Grant of NOC for proceeding abroad to all government employees
- ❖ Formulation of policies of draft bills and ordinances
- ❖ Responding to the questions asked in the assemblies
- ❖ Regulating the officers of the autonomous bodies
- ❖ Recognition of Universities
- ❖ Formulation and processing of Foreign Aided Projects and monitoring the progress
- ❖ Sanction of G.P fund advance, honorarium, and advance increments to BS-19 and above.

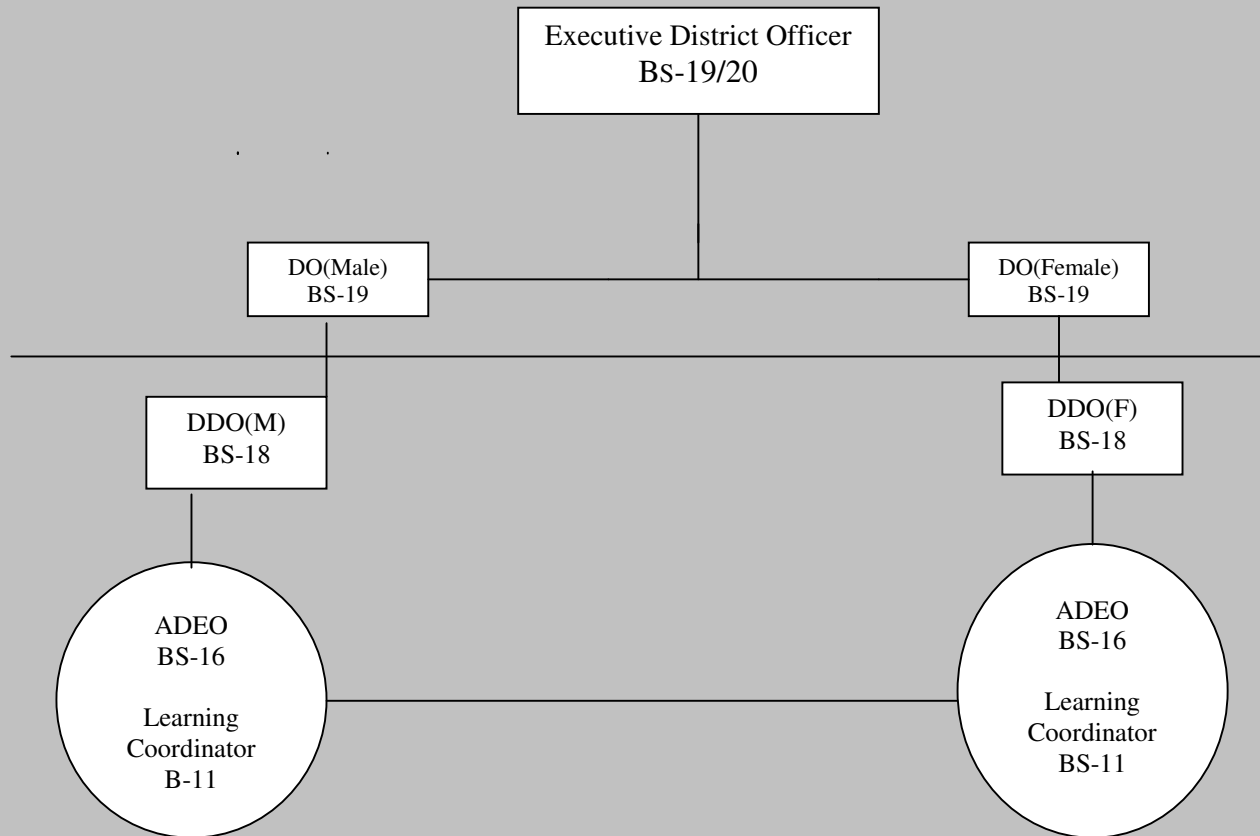
## *Secretariat of the Education Department*



The following important functions have been assigned to the Executive District Officers (Education) within the province:

- ❖ Appointment of BS-15 and below staff
- ❖ Posting and transfer of officers BS-15 and below
- ❖ Promotion/confirmation, Selection Grade and move over to BS-15 and below staff
- ❖ Retirement and acceptance of resignation of officers of staff BS-15 and below
- ❖ Grant of all kinds of leave to officials in BS-15 and below except Ex-Pakistan leave.
- ❖ Initiating disciplinary action against BS-15 and below staff.
- ❖ Coordination with other districts level department/organizations
- ❖ Grant of NOC for obtaining passport to officials BS-15 and below
- ❖ Implementation of policies for promotion of education
- ❖ Enhancing the standard of education
- ❖ Assessment of teacher training needs
- ❖ Launching of literacy campaigns
- ❖ Establishment of Primary and Middle Schools
- ❖ Establishment and up gradation of High Schools
- ❖ Preparation of annual budget
- ❖ Proposing of new schemes for the district
- ❖ Grant of scholarship to all level of students
- ❖ Distribution of budget within the districts/among institutions
- ❖ Issuing authorization for utilization of budget
- ❖ Re-appropriation of budget grants
- ❖ Sanction of G.P Fund advance, honorarium and advance increments to BS-15 and below staff
- ❖ Preparation of Statement of Expenditures (SOEs), Quarterly Monitoring Reports (QMRs) and getting the same reconciled.  
Maintenance of record of accounts getting the same audited on regular basis. Disposal/settlement of audit paras.

# Tehsil level District Level



Existing circle level continue

## ***District Population***

In Balochistan, Quetta, the provincial metropolis, is the largest city of the province with a total population of 822,000 persons; Ziarat, with 36,000 persons, is the district with the least population in Balochistan. In the context of education, available statistics<sup>1</sup> show that there are few districts with relatively high (between 65,000-75,000) primary-school aged population i.e., Jaffarabad, Pishin and Qila Abdullah; these districts also have high levels of middle and high school aged children (Table B.1). Districts with low levels (below 20,000) of primary-school aged population include Barkhan, Ziarat; Jhal Magsi and Awaran.

## ***Schools, Enrolment and Teachers***

Balochistan has a total of 10,910<sup>2</sup> schools of all levels i.e., primary, middle and high schools (Table B.2.1). Of these, there are 9,759 primary schools, with 7,220 for boys and 2,539 for girls. Every district has more boys' schools than girls' schools. Jaffarabad has the highest number of both boys' (527) and girls' primary schools (240). Ziarat has the least number (88 boys and 48 girls) of primary schools. Primary school enrolments are highest for both boys and girls in Quetta district; enrolment of boys is lower in Ziarat but the lowest in Dera Bugti for girls. (Table B.2.2).

## ***School Participation***

In Balochistan, the primary participation rates<sup>3</sup> vary between 42.25% in Ziarat and 3.74% in Jhal Magsi (Table B.3). Four districts have participation rates between 30%-40% while 13 districts have participation rates below 20%. The districts with relatively low (below 10%) participation rates are Kohlu (4.68%); Dera Bugti (7.25%); Nasirabad (7.44%); Jhal Magsi (3.74%).

---

<sup>1</sup> Data not available for Quetta.

<sup>2</sup> Data not available for Quetta

<sup>3</sup> Data not available for Quetta.

## ***Literacy Rates and Ranking***

Literacy rates in Balochistan districts range between 57.07% (Quetta) and 10.37% (Musa Khel). Districts with literacy rates between 30%-40% include Ziarat; Panjgur and Pishin (Table B.4.1). Districts of very low literacy rates (below 15%) include Awaran; Nasirabad; Jhal Magsi; Kohlu and Musa Khel.

Female literacy rates (15+) are generally very low, ranging between 19% in Panjgur and 2% in Dera Bugti (Table B.4.2). For females (10-14 years), literacy rates are better, with several Balochistan districts achieving a literacy rate of 30%-40% such as Panjgur; Ziarat; Kech; and Gwadar. For females of this age group, lowest literacy levels are seen in Dera Bugti (6%); Musa Khel (7%); and 11% in Kohlu, Kharan and Nasirabad.

In Balochistan, ranking of district displays a wide range i.e., between 57.07% and 10.37%. Planners should, however, focus more on the lower-ranked districts of Awaran; Nasirabad; Jhal Magsi; Kohlu and Musa Khel (Table B.4.3).

## ***Other Social Indicators***

Of its total population, Balochistan has an average of 46.7% in the age group of <15 years (Table B.5). Almost all districts have a high ratio of young population i.e., with over 40% of population aged below 15 years. Proportions of urban populations are low but Gwadar (54%); Lasbela (36.9%); Sibi (32.1%); Khuzdar (28.3%) and Quetta (25.6%) have relatively higher proportions of urban population. Districts at low levels of urbanization include Awaran (0%); Ziarat (1.9%); Pishin (6.3%); Barkhan (7.4%); Jhal Magsi (7.4%) and Musa Khel (8.6%). Household size is, generally, very high ranging between 8.5 persons per household (Quetta) to 5.1 persons per household (Kech).

## ***Population Projections (1998-2015)***

To facilitate the planning of the various sectors of the economy, the National Institute for Population Studies (NIPS), Islamabad has generated 15-year population projections for each province, separately for urban and rural population (Tables B.6.1-B.6.3).

**Table B.1 District Population  
Balochistan (1998)**

District	Population (5-9 years)		Population (10-14 years)		Population (15+ years)	
	Total	Total	Female	Total	Female	
Pishin	68489	53196	21464	76986	86529	
Qilla Abdullah	67543	50512	19097	186329	87583	
Chaghi	36003	27230	12255	105049	47796	
Loralai	49591	36756	15270	167087	78929	
Musakhel	27174	19936	6046	65156	29337	
Barkhan	18276	12027	5036	57091	27063	
Killa Saifullah	36388	50512	10306	82223	45819	
Zhob	53472	40205	15635	56609	59994	
Sibi	29089	21979	9510	103932	47333	
Ziarat	5666	4246	1694	17522	9103	
Dera Bugti	33234	20433	7431	95028	44492	
Jafarabad	74570	46225	19120	239229	117031	
Nasirabad	43163	25767	10358	136269	66106	
Jhal Magsi	20076	13251	5204	59202	28061	
Bolan	50073	35151	14870	158992	73349	
Kalat	42672	30895	13308	122762	59494	
Mastung	27545	19572	8710	90668	41967	
Awaran	20698	14604	6372	63024	30622	
Kharan	37089	26813	11777	108391	53260	
Lasbela	49635	39586	17540	176328	80634	
Kech	71159	49651	21448	218545	108588	
Gwadar	30282	23880	10759	100663	46941	
Panjkur	45999	31816	13090	106773	52109	
Khuzdar	73978	52026	21774	222755	105982	

Source: Population Census Organization ,District Census Reports (DCRs)  
Note: Roughly 52% of 5-9 age group Population is male and 48% Female.

**Table B.2.1 Number of Schools by Gender in Public Sector - Balochistan Districts 1999-2000**

District	Primary Schools			Middle Schools			High Schools			Total Schools		Grand Total
	Boys	Girls	Total	Boys	Girls	Total	Boys	Girls	Total	Boys	Girls	Total
AWARAN	166	45	211	12	2	14	11	-	11	189	47	236
BARKHAN	386	146	532	13	3	16	11	1	12	410	150	560
BOLAN	346	59	405	14	8	22	19	4	23	379	71	450
CHAGHI	221	111	332	25	9	34	12	5	17	258	125	383
DERA BUGTI	234	50	284	27	4	31	17	1	18	278	55	333
GAWADAR	147	65	212	11	4	15	10	2	12	168	71	239
JAFFARABAD	527	240	767	26	5	31	24	5	29	577	250	827
JHALMAGSI	158	72	230	18	3	21	8	2	10	184	77	261
KALAT	242	81	323	20	7	27	14	3	17	276	91	367
KHARAN	241	75	316	26	4	30	11	1	12	278	80	358
KHUZDAR	403	78	481	17	3	20	18	1	19	438	82	520
KILLA ABDULLAH	348	43	391	13	2	15	17	3	20	378	48	426
KILLA SAIFULLAH	300	105	405	16	5	21	10	3	13	326	113	439
KOHLU	252	52	304	15	3	18	8	1	9	375	56	331
LASBELA	362	122	484	30	5	35	15	3	18	407	130	537
LORALAI	453	151	604	35	8	43	11	4	15	499	163	660
MASTUNG	207	91	298	20	9	29	11	4	15	238	104	342
MUSAKHEL	167	56	223	8	1	9	7	3	10	182	60	242
NASIRABAD	227	118	345	16	3	19	10	1	11	253	122	375
PANJGUR	168	116	284	17	8	25	15	5	20	200	129	329
PISHIN	474	142	616	40	10	50	23	5	28	537	157	694
QUETTA	251	160	411	32	23	55	22	22	44	305	205	510
SIBI	165	81	246	11	6	17	14	6	20	190	39	283
TURBAT	323	173	496	37	19	56	32	6	38	392	198	590
ZHOB	364	59	423	21	1	22	14	1	15	399	61	460
ZIARAT	88	48	136	8	3	11	7	2	9	103	53	156
BALUCHISTAN	7,220	2,539	9,759	528	158	686	37	94	465	8,199	2,791	10,910

Source: Balochistan Education Management Information System (BEMIS).

**Table B.2.2 Total Enrolment by Gender in Public Sector Schools - Balochistan 1999-2000**

District	Primary Schools			Middle Schools			High Schools			Total Schools		Grand Total
	Boys	Girls	Total	Boys	Girls	Total	Boys	Girls	Total	Boys	Girls	
AWARAN	5,183	3,584	8,767	1,282	578	1,860	1,812	295	2,107	8,277	4,457	12,734
BARKHAN	6,574	4,857	11,431	722	311	1,033	1,809	295	2,104	9,105	5,463	14,568
BOLAN	8,638	3,870	12,508	1,497	1,031	2,528	5,140	1,842	6,982	15,275	6,743	22,018
CHAGHI	7,307	7,588	14,895	2,964	1,689	4,653	4,648	2,858	7,506	14,919	12,135	27,054
DERA BUGTI	5,813	1,069	6,882	1,681	140	1,821	2,690	321	3,011	10,184	1,530	11,714
GAWADAR	5,380	5,000	10,380	1,638	1,316	2,954	4,794	1,943	6,737	11,812	8,259	20,071
JAFFARABAD	17,773	11,411	29,184	3,512	760	4,272	9,891	3,015	12,906	31,176	15,186	46,362
JHALMAGSI	3,451	2,360	5,811	1,500	257	1,757	1,465	335	1,800	6,416	2,952	9,368
KALAT	7,549	6,822	14,371	1,887	1,109	2,996	2,938	1,632	4,570	12,374	9,563	21,937
KHARAN	5,890	4,646	10,536	2,157	420	2,577	1,995	786	2,781	10,042	5,852	15,894
KHUZDAR	15,839	6,514	25,353	1,824	1,270	3,094	3,984	1,419	5,403	21,647	12,203	33,850
KILLA ABDULLAH	17,604	3,440	21,044	3,385	665	4,050	7,166	1,781	8,947	28,155	5,886	34,041
KILLA SAIFULLAH	8,871	5,637	14,508	1,530	632	2,162	2,730	1,066	3,796	13,131	7,335	20,466
KOHLU	3,647	1,937	5,584	843	335	1,178	1,008	254	1,262	5,498	2,526	8,024
LASBELA	11,226	8,374	19,600	3,087	858	3,945	6,048	2,487	8,535	20,361	11,719	32,080
LORALAI	12,670	6,733	19,403	4,388	948	5,336	3,110	1,770	4,880	20,168	9,451	29,619
MASTUNG	7,733	3,753	11,486	2,549	1,383	3,932	2,537	1,646	4,283	12,819	6,782	19,601
MUSAKHEL	3,248	1,982	5,230	792	47	839	1,308	533	1,841	5,348	2,562	7,910
NASIRABAD	7,896	5,656	13,552	2,263	311	2,574	2,593	496	3,089	12,752	6,463	19,215
PANJGUR	3,321	8,525	15,846	2,833	1,537	4,370	6,177	2,832	9,009	16,331	12,894	29,225
PISHIN	20,869	11,942	32,811	5,457	1,638	7,095	7,240	2,172	9,412	33,566	15,752	49,318
QUETTA	31,748	20,115	51,863	11,166	9,190	20,356	22,830	31,263	54,093	65,744	60,568	126,312
SIBI	5,984	5,973	11,957	1,477	1,506	2,983	5,604	2,447	8,051	13,065	9,926	22,991
TURBAT	15,634	17,003	32,637	6,496	4,618	11,114	12,326	5,090	17,416	34,456	26,711	61,167
ZHOB	11,671	5,639	17,310	3,120	121	3241	3,516	669	4,185	18,307	6,429	24,736
ZIARAT	2,672	2,002	4,674	794	398	1,192	1,266	290	1,556	4,732	2,690	7,422
BALUCHISTAN	258,191	169,432	427,623	70,844	33,068	103,912	126,625	69,537	196,162	455,660	272,037	727,697

Source: Balochistan Education Management Information System (BEMIS)

**Table B.3 Participation of School-going Children (5-9 years), Balochistan (1998)**

District	Population (5-9) Total	School Going Upto Primary Level	Participation Rate 1998 (%)	District	Population (5-9)	School Going Upto Primary Level	Participation Rate 1998 (%)
Quetta	-	-	-	Nasirabad	43163	3211	7.44
Pishin	68489	21957	32.06	Jhal Magsi	20076	751	3.74
Qilla Abdullah	67543	10730	15.89	Bolan	50073	9863	19.7
Chaghi	36003	10053	27.92	Kalat	42672	5450	12.77
Loralai	49591	10080	20.33	Mastung	27545	6181	22.44
Musakhel	27174	2796	10.29	Khuzdar	73978	13949	18.86
Barkhan	18276	2994	16.38	Awaran	20698	2915	14.08
Killa Saifullah	36388	7899	21.71	Kharan	37089	5135	13.85
Zhob	53472	7673	14.35	Lasbela	49635	10629	21.41
Sibi	29089	5149	17.70	Kech	71159	27540	38.7
Ziarat	5666	2405	42.45	Gwadar	30282	10338	34.14
Kohlu	16771	785	4.68	Panjgur	45999	18234	39.64
Dera Bugti	33234	2411	7.25				
Jafarabad	74570	13191	17.69				

Source: Population Census Organization  
UNESCO Islamabad.

**Table B.4.1 Literacy Rate (10 Years & above) by Gender and Location - Balochistan Districts 1998 and 2001**

Balochistan	Years	All Areas			Urban			Rural		
		Both Sexes	Male	Female	Both Sexes	Male	Female	Both Sexes	Male	Female
	1998	26.60	36.50	15.00	50.30	62.40	35.30	18.90	27.80	8.80
	2001	31.45	42.60	18.70	54.42	66.80	39.56	23.01	33.42	11.64
District										
Quetta	1998	-	-	-	-	-	-	-	-	-
	2001	-	-	-	-	-	-	-	-	-
Pishin	1998	31.14	47.29	13.15	37.13	47.21	24.92	30.71	47.30	12.33
	2001	44.66	65.25	27.78	53.53	63.77	44.88	44.20	65.45	28.04
Qilla Abdullah	1998	16.10	23.75	6.77	29.06	39.78	14.70	13.66	20.58	5.37
	2001	-	-	-	-	-	-	-	-	-
Chaghi	1998	26.99	37.99	13.76	45.42	58.64	30.07	22.95	33.55	10.10
	2001	34.95	46.27	28.92	55.88	68.19	50.92	29.11	40.44	20.32
Loralai	1998	20.47	30.12	9.24	53.28	66.15	33.39	15.82	24.25	6.39
	2001	30.30	43.21	17.03	59.24	72.73	39.14	24.07	35.69	14.27
Musakhel	1998	10.37	14.34	4.80	16.05	23.80	6.28	9.86	13.53	4.66
	2001	-	-	-	-	-	-	-	-	-
Barkhan	1998	15.67	23.69	6.41	37.14	49.48	21.15	13.95	21.91	5.32
	2001	-	-	-	-	-	-	-	-	-
Killa Saifullah	1998	17.55	24.98	8.92	33.88	43.12	23.18	15.08	22.24	6.75
	2001	-	-	-	-	-	-	-	-	-
Zhob	1998	16.78	24.53	6.90	47.84	63.37	24.22	10.40	15.80	3.75
	2001	23.76	32.00	9.88	55.30	70.50	33.93	13.34	20.35	4.86
Sibi	1998	25.47	35.25	13.60	41.63	52.25	29.08	17.92	27.44	6.19
	2001	30.93	41.49	18.62	46.37	57.37	33.90	22.31	32.98	9.32
Ziarat	1998	34.34	51.38	17.02	51.49	65.71	19.87	33.93	50.91	16.98
	2001	-	-	-	-	-	-	-	-	-
Kohlu	1998	12.15	17.83	4.85	39.84	55.15	17.76	9.19	13.61	3.57
	2001	-	-	-	-	-	-	-	-	-

	Years	All Areas			Urban			Rural		
		Both Sexes	Male	Female	Both Sexes	Male	Female	Both Sexes	Male	Female
Dera Bugti	1998	11.73	18.89	2.97	28.71	41.94	12.94	10.05	16.64	1.96
	2001	-	-	-	-	-	-	-	-	-
Jafarabad	1998	18.51	27.50	8.64	27.46	38.24	15.56	16.26	24.80	6.92
	2001	-	-	-	-	-	-	-	-	-
Nasirabad	1998	12.69	19.51	5.06	21.78	32.77	8.86	11.05	17.06	4.39
	2001	16.50	24.36	9.81	22.75	33.95	10.24	14.92	22.33	9.28
Jhal Magsi	1998	12.28	17.64	5.97	24.36	34.45	13.30	11.31	16.34	5.36
	2001	-	-	-	-	-	-	-	-	-
Bolan	1998	15.74	23.08	6.93	36.24	48.93	21.54	12.34	18.87	4.45
	2001	-	-	-	-	-	-	-	-	-
Kalat	1998	19.86	29.24	9.44	44.67	60.20	28.14	15.69	24.17	6.21
	2001	24.09	34.07	16.51	54.57	69.13	46.08	18.79	28.02	10.79
Mastung	1998	27.58	37.66	15.73	53.19	66.12	38.97	23.05	32.81	11.44
	2001	-	-	-	-	-	-	-	-	-
Khuzdar	1998	17.46	25.33	8.39	30.71	42.01	17.57	12.28	18.77	4.83
	2001	27.19	37.04	24.66	36.17	47.96	29.19	18.45	26.97	14.27
Awaran	1998	14.79	23.16	5.60	-	-	-	14.79	23.16	5.60
	2001	-	-	-	-	-	-	-	-	-
Kharan	1998	15.05	23.73	5.69	31.75	48.89	13.91	12.50	19.97	4.41
	2001	21.91	33.74	12.85	37.77	58.37	20.68	18.91	29.48	12.21
Lasbela	1998	22.30	32.16	10.46	34.88	45.79	20.54	14.88	23.59	4.98
	2001	32.08	44.20	22.41	42.49	54.45	30.21	20.94	32.18	10.35
Kech	1998	27.51	38.07	16.28	45.34	59.71	28.80	23.74	33.29	13.77
	2001	-	-	-	-	-	-	-	-	-
Gwadar	1998	25.47	35.52	13.81	34.07	46.27	19.87	14.84	22.19	6.38
	2001	39.74	49.87	48.77	45.72	56.44	55.07	26.10	36.01	29.20
Panjgur	1998	31.35	39.35	22.34	44.32	54.13	33.75	29.93	37.77	21.06
	2001	50.59	56.80	91.79	98.16	64.09	83.63	48.97	55.31	88.50

**Table B.4.2 Population and Literacy Rates - Balochistan Districts (1998)**

District	Female				Total				Female				Total			
	Population 15+	Literacy Rates	Illiterate 15+	Illiteracy Rate	Population 15+	Literacy Rate	Illiterate 15+	Illiteracy Rate	Population 10-14	Literacy Rate	Illiterate 10-14	Illiteracy Rate	Population 10-14	Literacy Rates	Illiterate 10-14	Illiteracy Rate
Panjgur	52109	19%	42440	81%	106773	29%	75883	71%	13090	37%	8191	63%	31816	39%	19257	61%
Ziarat	9103	14%	7829	86%	17522	32%	11965	68%	1694	33%	1130	67%	4246	45%	2328	55%
Mastung	41967	13%	36418	87%	90668	25%	67761	75%	8710	28%	6290	72%	16572	38%	12079	62%
Kech	108588	12%	95149	88%	218545	24%	165303	76%	21448	36%	13721	64%	49651	41%	29125	59%
Sibi	47333	11%	42023	89%	103932	24%	79172	76%	9510	25%	7091	75%	21979	33%	14666	67%
Pishin	86529	11%	76986	89%	175145	30%	123272	70%	21464	22%	16810	78%	53196	36%	33959	64%
Gawadar	46941	10%	42257	90%	100663	22%	78118	78%	10759	31%	7472	69%	23880	38%	14710	62%
Chagai	47796	10%	43132	90%	105049	24%	79440	76%	12255	29%	8655	71%	27230	37%	17135	63%
Loralai	78929	8%	72372	92%	167087	20%	133680	80%	15270	14%	13125	86%	36756	23%	28434	77%
Lasbela	80634	8%	74148	92%	176328	20%	141102	80%	17540	22%	13757	78%	39586	33%	26673	67%
Qilla Saifullah	45819	7%	42458	93%	94441	16%	78909	84%	10306	16%	8661	84%	26888	21%	21123	79%
Kalat	59494	7%	55141	93%	122762	18%	101245	82%	13308	19%	10791	81%	30895	29%	21900	71%
Jafarabad	117031	7%	108950	93%	239229	17%	199687	83%	19120	19%	15435	81%	46225	29%	23939	71%
Khuzdar	105962	7%	98899	93%	222755	16%	187275	84%	21774	17%	18133	83%	52026	24%	39542	76%
Killa Abdullah	87583	6%	82223	94%	186329	16%	157385	84%	19097	10%	17235	90%	50512	18%	41323	82%
Zhob	59994	6%	56609	94%	131856	16%	110402	84%	15635	12%	13801	88%	40205	18%	32785	82%
Bolan	73349	6%	69223	94%	158992	15%	135863	85%	14870	13%	12884	87%	35151	21%	27724	79%
Barkhan	27063	5%	25644	95%	57091	14%	49060	86%	5036	13%	6396	87%	12027	23%	9230	79%
Jhalmagsi	28061	5%	26595	95%	59202	12%	52350	88%	5204	10%	4684	90%	13251	15%	11206	85%
Kharan	53280	5%	50850	95%	108391	14%	93238	86%	11777	11%	10504	89%	26813	19%	216017	81%
Musa Khel	29337	4%	28085	96%	65156	10%	58482	90%	6046	7%	5599	93%	19936	11%	17783	89%
Naseerabad	66106	4%	63425	96%	136269	11%	120665	89%	10358	11%	9171	89%	25767	19%	20804	81%
Kohlu	26635	4%	25568	96%	58469	11%	517535	89%	3700	11%	3295	89%	10815	16%	9105	84%
Awaran	30622	4%	29513	96%	63024	13%	55101	87%	6372	15%	5410	85%	14604	24%	11047	46%
Deri Bugti	44492	2%	43428	98%	95028	11%	84232	89%	7431	6%	6955	94%	20433	13%	17687	87%
Quetta																
BALOCHIST.	1454777	8%	1339365	92%	3060696	18%	2491343	82%	301774	19%	243196	81%	733460	27%	534181	73%

**Table B.4.3 District Ranking by Literacy Rate (10+ years) and Illiterate Population Balochistan (1998)**

District	Literacy Rate (%) 10+	Illiterate Population 10+ (in number)	Ranking Order
Quetta	57.07	231,116	1
Ziarat	34.34	14,293	2
Panjgur	31.35	95,140	3
Pishin	31.14	157,231	4
Mastung	27.58	79,840	5
Kech	27.51	194,428	6
Chaghi	26.99	96,575	7
Sibi	25.473	93,838	8
Gwadar	25.465	92,828	9
Lasbela	22.30	167,775	10
Loralai	20.47	162,114	11
Kalat	19.86	123,145	12
Jafarabad	18.51	232,626	13
Killa Saifullah	17.55	100,032	14
Khuzdar	17.46	226,817	15
Zhob	16.78	143,187	16
Killa Abdullah	16.10	198,708	17
Bolan	15.78	163,587	18
Barkhan	15.67		19
Kharan	15.05	114,855	20
Awaran	14.79	66,148	21
Nasirabad	12.69	141,469	22
Jhal Magsi	12.28	63,556	23
Kohlu	12.15	60,858	24
Musa Khel	10.37	76,265	25

Source: EFA Wing, Ministry of Education

**Table B.5 District Statistics on Social Indicators Balochistan**

Area	CENSUS POPULATION FIRST MARCH 1998			Pop. Density per sq K.M	BROAD AGE GROUPS (% DISTRIBUTION)			% of Pop age 60 and over	Total Fertility Rate	% Urban Pop.	% Literate in Pop. age 10 & over			Per sons per house hold	Population Estimated for the year (in thousand)			
	Both Sexes	Male	Female		<15	15-64	65 and over				Both Sexes	Male	Fem		2001	2004	2011	2021
Province & District																		
BALUCHISTAN	6565885	3506506	3059379	18.9	46.7	50.8	2.5	4.3	5.4	23.9	24.8	34.0	14.1	6.7	7101	7595	8868	10727
AWARAN	118173	62114	56059	4.0	46.7	3.9	2.4	4.4	5.6	0.0	14.8	23.2	5.6	5.4	128	137	160	193
BARKHAN	103345	54365	49180	29.5	44.9	52.1	3.0	5.1	5.2	7.4	15.7	23.7	6.4	7.1	112	120	140	169
BOLAN	288056	155488	132568	38.4	44.8	52.3	2.9	5.1	6.2	13.7	15.7	23.1	6.9	7.3	312	333	389	471
CHAGHI	202564	108736	93828	4.0	48.1	49.6	2.3	3.9	5.0	17.7	27.0	38.0	13.8	6.7	219	234	274	331
DERA BHUGHTI	181310	97316	83994	17.8	47.6	49.8	2.6	4.3	5.9	8.5	11.7	18.9	3.0	6.2	196	210	245	296
GAWADAR	185498	99436	86436	14.7	45.7	51.7	2.6	4.4	4.8	54.0	25.5	35.0	13.8	5.5	201	215	251	303
JAFARABAD	432817	225028	207789	177.0	44.7	52.6	2.7	4.8	4.9	19.8	18.5	27.5	8.6	7.1	468	501	585	708
JHALMAGSI	109941	58868	51073	30.4	46.2	51.1	2.7	4.8	4.7	7.4	12.3	17.6	6.0	6.8	119	127	149	180
KALAT	237834	122935	114899	35.9	48.4	49.1	2.5	4.4	5.1	14.2	19.9	29.2	9.4	6.8	257	275	322	389
KECH	413204	216566	196638	18.3	46.1	50.4	2.5	4.1	6.7	16.6	27.5	38.1	16.3	5.1	447	478	558	676
KHARAN	206909	107261	99648	4.3	47.6	49.5	2.9	4.9	5.6	13.4	15.1	23.7	5.7	5.8	224	239	280	338
KHUZDAR	417466	220023	197443	11.8	46.6	50.4	2.7	4.7	5.6	28.3	17.5	25.3	8.4	5.4	452	483	564	682
QILLA ABDULLAH	370269	203324	166324	112.4	49.7	48.0	2.4	3.9	5.9	15.3	16.1	23.8	6.8	8.0	400	428	500	605
QILLA SAIFULLAH	193553	105174	88379	28.3	51.2	46.4	2.4	4.1	5.7	13.1	17.6	25.0	8.9	7.0	209	224	261	316
KOHLU	99846	54884	43962	13.1	41.5	55.7	2.8	5.0	4.4	9.7	12.2	17.8	4.9	6.4	108	115	135	163
LASBELA	312695	167470	145225	20.6	43.6	53.4	3.0	4.9	4.7	36.9	22.3	32.2	10.5	6.2	338	262	422	511
LORALAI	297555	158168	139389	30.3	43.8	53.3	2.8	4.6	5.0	11.8	20.5	30.1	9.2	7.4	322	344	402	486
MASTUNG	164645	87334	77311	27.9	44.9	51.9	2.6	4.4	5.7	14.9	27.6	37.7	15.7	7.9	178	191	222	269
MUSAKHAIL	134056	74139	59917	23.4	51.4	45.5	3.1	5.1	5.1	8.6	10.4	14.3	4.8	7.0	145	155	181	219
NASIRABAD	245894	129412	116482	72.6	44.6	52.6	2.8	4.9	4.7	15.6	12.7	19.5	5.1	6.4	266	285	332	402
PISHIN	367183	196330	170853	46.0	52.3	45.8	1.9	3.2	8.0	6.3	31.1	47.3	13.2	6.8	397	425	496	600
PANJGUR	234051	125648	108403	13.9	54.4	43.8	1.8	3.2	5.9	9.1	31.4	39.4	22.3	6.2	253	271	316	382
QUETTA	759941	412064	347877	286.4	42.0	56.0	2.0	3.5	4.7	25.6	57.1	67.3	46.5	8.5	822	879	1026	1241
SIBI	180398	97332	83066	23.1	42.4	53.7	2.9	5.0	5.2	32.1	25.5	35.3	13.6	6.9	195	209	244	295
ZHOB	275142	149787	125355	13.6	52.1	45.5	2.4	4.0	5.7	15.9	16.8	24.5	6.9	7.9	298	318	372	449
ZIARAT	33340	17304	16036	22.4	47.4	50.2	2.3	3.7	5.2	1.9	34.3	51.4	17.0	7.4	36	39	45	55

**Table B.6.1 Population Projections by Gender and Age Group  
(1998-2015)  
Balochistan (Total)**

Year	00-04			05-09			10-14			15-24			25-34			35-49			50+			Total		
	Total	Male	Female	Total	Male	Female	Total	Male	Female	Total	Male	Female	Total	Male	Female	Total	Male	Female	Total	Male	Female	Total	Male	Female
1998	1021	529	492	1005	536	469	938	501	438	1336	696	621	823	431	392	779	430	349	733	402	331	6615	3525	3092
1999	1019	526	493	1004	533	471	960	513	447	1385	733	652	857	449	409	802	441	361	748	410	338	6775	3605	3171
2000	1020	525	495	1003	531	472	979	523	455	1452	769	683	895	468	427	827	453	374	763	418	345	6939	3687	3251
2001	1023	526	497	1000	527	473	992	530	462	1520	806	714	935	489	446	853	466	387	779	427	352	7102	3771	3331
2002	1028	529	500	995	521	473	997	532	465	1591	844	767	977	512	465	880	479	401	795	436	359	7263	3853	3410
2003	1037	533	504	989	515	474	998	531	466	1662	882	780	1022	536	486	909	492	417	811	445	366	7428	3934	3493
2004	1047	539	508	984	510	474	996	529	467	1728	918	810	1070	563	508	940	507	433	828	454	374	7593	4020	3574
2005	1059	545	514	984	508	476	995	527	468	1785	949	836	1122	591	531	975	524	451	846	464	382	7766	4108	3658
2006	1074	552	521	988	509	479	993	523	469	1833	975	858	1178	621	557	1012	541	471	865	474	391	7943	4195	3746
2007	1092	562	530	995	513	482	988	518	470	1874	998	877	1239	654	584	1052	559	493	884	485	399	8124	4289	3835
2008	1111	572	539	1004	518	486	982	512	470	1909	1017	892	1302	689	613	1094	579	516	904	496	409	8306	4383	3925
2009	1130	581	548	1015	524	492	978	507	471	1937	1032	905	1366	724	643	1140	600	539	926	507	419	8492	4475	4017
2010	1145	589	556	1028	530	498	978	505	473	1959	1043	916	1431	759	672	1189	625	564	960	520	430	8680	4571	4109
2011	1158	596	562	1044	538	505	982	506	476	1970	1046	923	1498	795	703	1240	651	589	976	533	443	8868	4665	4201
2012	1171	602	568	1063	548	515	989	510	479	1970	1043	927	1570	834	736	1294	680	614	1004	547	457	9061	4764	4296
2013	1181	608	573	1083	559	525	998	515	484	1966	1036	929	1641	872	769	1352	711	640	1034	562	473	9255	4863	4393
2014	1188	612	577	1103	569	534	1010	521	489	1966	1030	931	1707	907	800	1413	745	669	1066	578	489	9448	4962	4489
2015	1191	613	578	1119	577	542	1023	528	495	1960	1026	935	1764	938	826	1480	780	700	1101	595	506	9638	5057	4582

Source: National Institute of Population Studies (NIPS) Islamabad.

**Table B.6.2 Population Projections by Gender and Age Group  
(1998-2015)  
Balochistan (Urban)**

Year	00-04			05-09			10-14			15-24			25-34			35-49			50+			Total		
	Total	Male	Female	Total	Male	Female	Total	Male	Female	Total	Male	Female	Total	Male	Female	Total	Male	Female	Total	Male	Female	Total	Male	Female
1998	227	115	112	191	103	87	196	107	89	317	170	147	228	122	106	225	123	102	161	84	76	1545	824	719
1999	237	120	118	200	108	92	210	115	95	350	187	162	248	132	115	241	131	110	171	89	81	1657	882	773
2000	248	124	123	208	112	97	223	121	101	381	204	177	268	143	125	258	139	118	181	94	86	1767	937	827
2001	257	129	128	215	114	101	233	127	106	411	220	191	288	154	135	274	147	126	190	99	91	1868	990	878
2002	265	132	132	219	116	103	239	130	109	440	236	204	308	164	144	288	155	134	198	104	94	1957	1037	920
2003	271	136	135	222	117	105	244	132	112	467	252	217	327	174	152	302	162	141	206	108	98	2039	1080	960
2004	278	139	139	225	118	107	248	134	114	494	265	229	348	186	162	318	169	148	214	112	101	2125	1123	1000
2005	287	144	143	229	120	110	253	136	116	520	279	241	371	199	173	335	178	157	222	117	105	2217	1173	1045
2006	297	149	148	236	123	113	258	138	119	545	293	252	398	213	185	355	187	168	232	122	110	2321	1225	1095
2007	309	155	154	243	126	116	262	140	122	569	306	263	426	229	197	376	197	179	242	127	114	2427	1280	1145
2008	321	161	160	250	130	120	266	141	125	592	319	273	457	245	211	398	208	190	252	133	119	2536	1337	1198
2009	333	167	166	250	135	124	271	143	128	614	331	283	488	263	226	423	220	203	263	139	125	2651	1398	1255
2010	345	173	172	268	140	129	277	146	131	634	341	293	522	281	241	449	233	216	276	145	131	2771	1459	1313
2011	357	179	178	279	145	134	285	150	135	651	349	301	558	301	257	478	248	230	291	153	138	2899	1525	1373
2012	369	186	184	291	152	140	294	154	140	665	356	309	597	322	275	509	264	245	306	160	146	3031	1594	1439
2013	381	192	190	304	158	146	303	159	144	678	362	317	637	344	293	542	282	261	323	169	154	3168	1666	105
2014	392	197	195	317	165	152	314	165	149	692	367	325	676	365	311	578	301	277	341	177	164	3310	1737	1573
2015	402	202	200	330	171	158	326	171	155	707	374	333	713	385	328	618	322	296	361	187	174	3457	1812	1644

Source:- National Institute of Population Studies (NIPS) Islamabad.

**Table B.6.3 Population Projections by Gender and Age Group  
(1998-2015)  
Balochistan (Rural)**

Year	00-04			05-09			10-14			15-24			25-34			35-49			50+			Total		
	Total	Male	Female	Total	Male	Female	Total	Male	Female	Total	Male	Female	Total	Male	Female	Total	Male	Female	Total	Male	Female	Total	Male	Female
1998	794	414	380	814	433	382	742	394	349	999	526	474	595	309	286	554	307	247	572	318	255	5070	2701	2373
1999	782	406	375	804	425	389	750	398	352	1035	546	490	609	317	294	561	310	251	577	321	257	5118	2723	2398
2000	772	401	372	795	419	375	756	402	354	1071	565	506	627	325	302	569	314	256	582	324	259	5172	2750	2424
2001	766	397	369	785	413	372	769	403	356	1109	586	523	647	335	311	579	319	261	589	328	261	5234	2781	2453
2002	763	397	368	776	405	370	758	402	356	1151	608	543	669	348	321	592	324	267	597	332	265	5306	2816	2490
2003	766	397	369	767	398	369	754	399	354	1195	631	563	695	362	334	607	330	276	605	337	268	5389	2854	2533
2004	769	400	369	769	392	367	748	395	353	1234	653	581	722	377	346	622	338	285	614	342	273	5468	2897	2574
2005	772	401	371	755	388	366	742	391	352	1265	670	595	751	392	358	640	346	294	624	347	277	5549	2935	2613
2006	777	403	373	752	386	366	735	385	350	1288	682	606	780	408	372	657	354	303	634	352	281	5622	2970	2651
2007	783	407	376	752	387	366	726	378	348	1305	692	614	813	425	387	676	362	314	642	358	285	5697	3009	2690
2008	790	411	379	754	388	366	716	371	345	1317	698	619	845	444	420	696	371	328	652	363	290	5770	3046	2727
2009	797	414	382	756	389	368	707	364	343	1323	701	622	878	461	417	717	380	336	663	368	294	5841	3077	2762
2010	800	416	384	760	390	369	701	369	342	1325	702	623	909	478	431	740	392	348	674	375	299	6909	3112	2796
2011	801	417	384	765	393	371	697	356	341	1319	697	622	940	494	446	762	403	359	685	380	305	6969	3140	2828
2012	802	416	384	772	396	375	695	356	339	1305	687	618	973	512	461	785	416	369	698	387	311	6030	3170	2857
2013	800	416	383	769	401	369	695	356	340	1288	674	612	1004	528	476	810	429	379	711	393	319	6087	3197	2888
2014	796	415	382	786	404	382	696	356	340	1269	663	606	1031	542	489	835	444	392	725	401	325	6138	3225	2916
2015	789	411	378	789	406	384	697	357	340	1253	652	602	1051	553	498	862	458	404	740	408	332	6181	3245	2938

Source: National Institute of Population Studies (NIPS) Islamabad.